



INVERNESS TERRACE, W2
GUIDE PRICE £2,500,000

Winkworth



INVERNESS TERRACE, W2

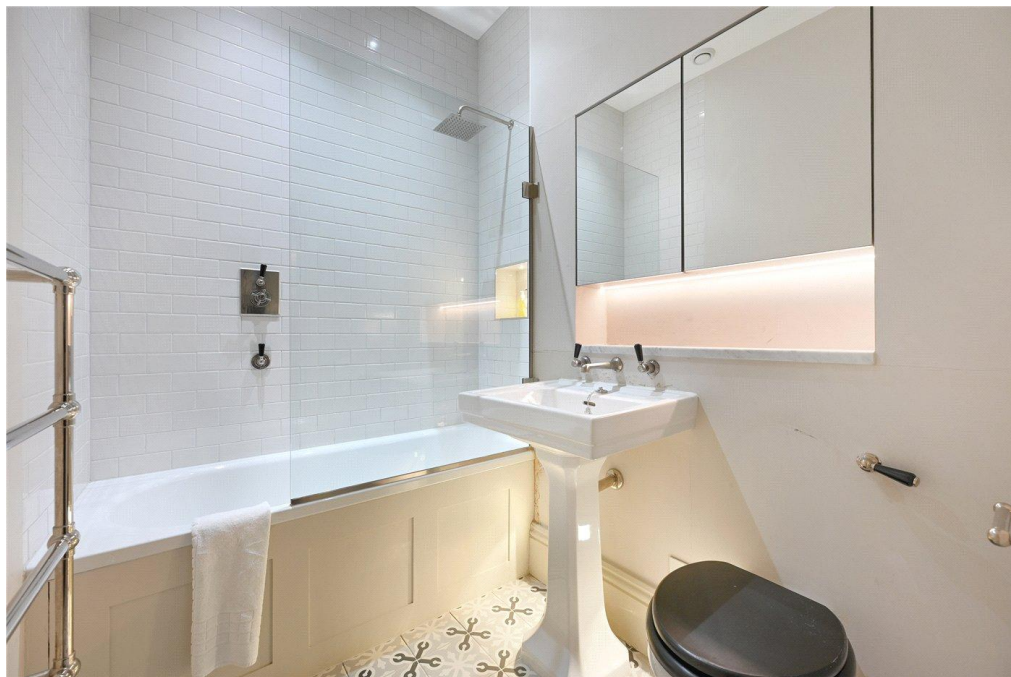
Set in a beautifully restored Grade II stucco fronted Victorian former terrace house, a magnificent two-bedroom duplex apartment, set over the ground and first floor, accessed through French double doors - “giving an air of grandeur”, with high ceilings, intricate cornicing, and seamlessly blended with 21st century everyday needs.

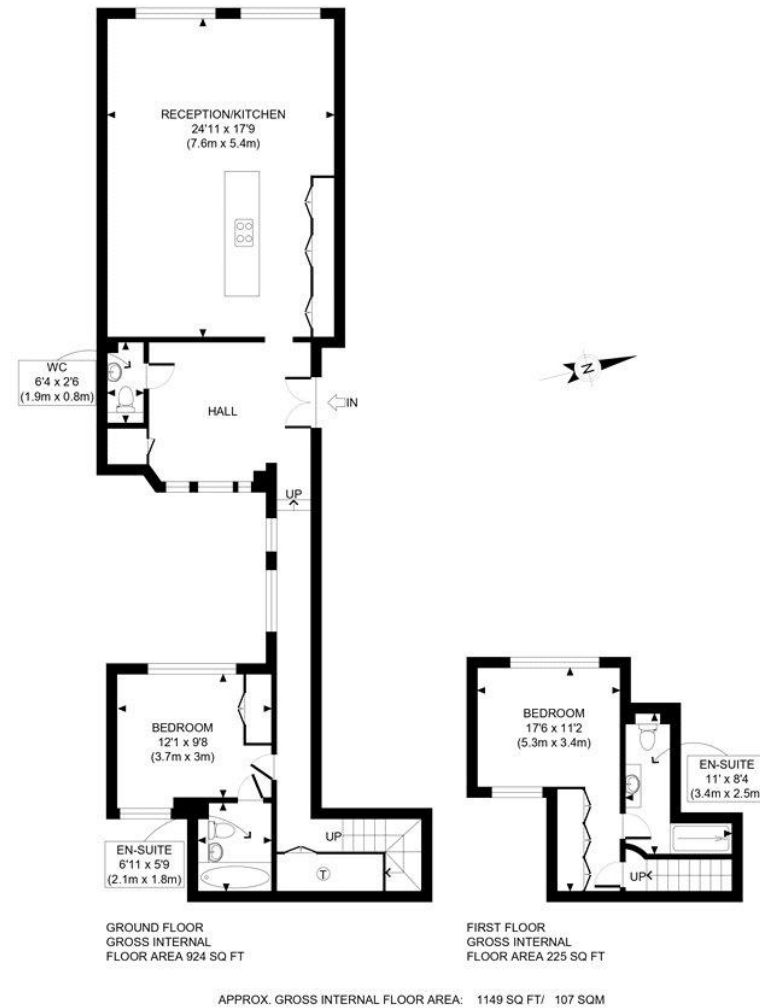
The apartment combines attractive period features with modern comforts. It includes air conditioning, herringbone flooring, cast-iron radiators and underfloor heating. The kitchen is fitted with Siemens appliances, and the building benefits from a porter service, CCTV and a secure entry phone system.

Located on a stunning tree lined street - 'Inverness Terrace', in the heart of Bayswater, with easy access to both Bayswater St' (Hammersmith, Circle and District lines) and Queensway (Central line). Conveniently located for international and national transport links at Paddington Mainline Station (Heathrow Express / Elizabeth Line). Westbourne Grove is also within easy reach, as is Queensway and the significant and world-class development 'The Whiteley'.



Leasehold: About 991 Years Remaining
 Service Charge: Approx. £13,000 p.a.
 Ground Rent: Approx. £1,950 pa
 Council Tax: Band G, Westminster Council





Winkworth

This plan is for illustrative purposes only and should be used as such by any prospective client. Whilst every attempt has been made to ensure the accuracy of the Floor Plan contained here, measurements of the doors, windows, rooms and any other items are approximate and no responsibility is taken for any errors, omissions, or misstatement. The services, systems and appliances shown have not been tested and no guarantee as to the operability or efficiency can be given.

PROPERTY PHOTO PLANS
AN ISO 9001:2015 REGISTERED BUSINESS

Paddington & Bayswater | 020 7240 3322 | paddington@winkworth.co.uk

winkworth.co.uk

Winkworth wishes to inform prospective buyers and tenants that these particulars are a guide and act as information only. All our details are given in good faith and believed to be correct at the time of printing, but they don't form part of an offer or contract. No Winkworth employee has authority to make or give any representation or warranty in relation to this property. All fixtures and fittings, whether fitted or not are deemed removable by the vendor unless stated otherwise and room sizes are measured between internal wall surfaces, including furnishings.

Winkworth