

Park Street, London, W1K  
£1,500 per week

2  1  2 



Winkworth Mayfair  
020 7589 6616 | [mayfair@winkworth.co.uk](mailto:mayfair@winkworth.co.uk)

Winkworth

for every step...



# Spacious duplex apartment, in the heart of Mayfair.

## ABOUT THIS HOUSE

This fabulous apartment has a generously sized double reception room with feature bay windows, plus a well-equipped Poggenpohl kitchen with integrated appliances and an adjacent breakfast area. In addition, there is a substantial principal bedroom with en-suite marble bathroom and a second guest suite with a wealth of fitted storage. The flat also benefits from a separate utility room with drying area and a storage along with a guest cloakroom/powder room off the main entrance hallway. The apartment benefits from Gas central heating throughout, fibre broadband is readily

available and the property qualifies for City of Westminster parking permits, Council Tax Band H. Park Street forms part of Mayfair's welcoming village atmosphere, which features some of London's most exclusive restaurants, boutiques and attractions on the immediate doorstep. Close at hand are the local antique shops, luxury shopping at Bond Street and Saville Row, plus intimate dining at Shepherd's Market.

## KEY FEATURES

- 2 bedrooms
- 1 reception room
- 2 bathrooms
- 1,701 Square Feet
- Furnished
- Prime Location














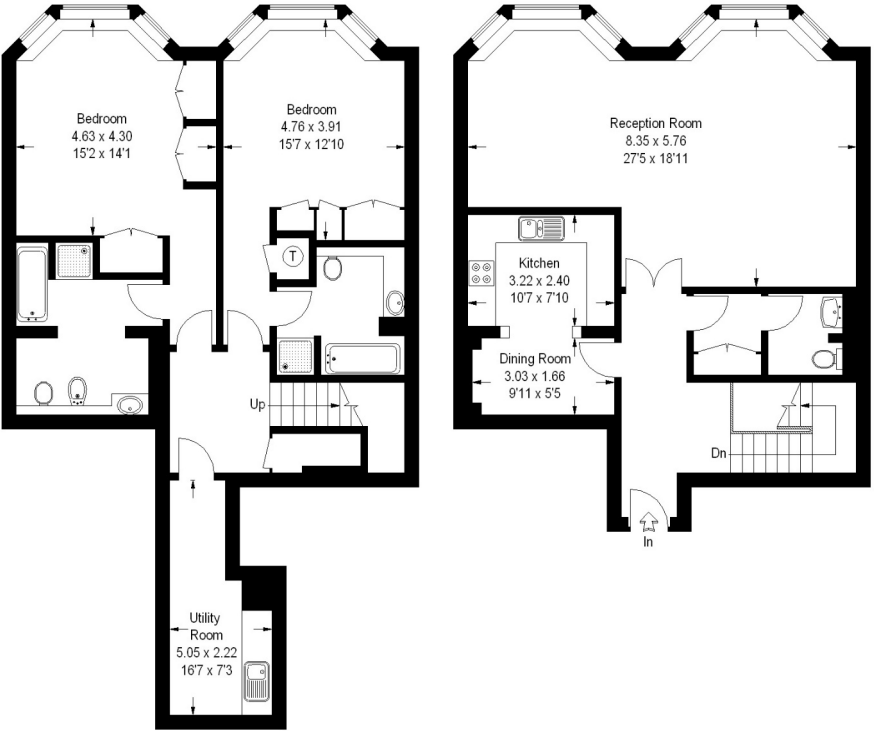
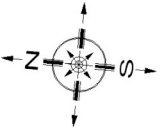
### FINER DETAILS

- 2 bedrooms
- 1 reception room
- 2 bathrooms
- 1,701 Square Feet
- Furnished
- Prime Location

Energy Efficiency Rating		
	Current	Potential
Very energy efficient - lower running costs		
(92+) <b>A</b>		
(81-91) <b>B</b>		
(69-80) <b>C</b>		
(55-68) <b>D</b>		
(39-54) <b>E</b>		
(21-38) <b>F</b>		
(1-20) <b>G</b>		
Not energy efficient - higher running costs		
	52	67
England, Scotland & Wales <small>EU Directive 2002/91/EC</small> 		

### Park Street, Mayfair, W1

Approximate Gross Internal Area :-  
158 sq m / 1701 sq ft







Winkworth Mayfair  
020 7589 6616 | [mayfair@winkworth.co.uk](mailto:mayfair@winkworth.co.uk)

**Winkworth**

for every step...