



PORTSDOWN AVENUE, TEMPLE FORTUNE, NW11
£575,000 LEASEHOLD

**TWO BED TWO BATH GROUND FLOOR FLAT
WITH DIRECT ACCESS TO A STUNNING
PRIVATE REAR GARDEN...**

Golders Green | 020 8458 8313 | goldersgreen@winkworth.co.uk

Winkworth

for every step...

winkworth.co.uk



DESCRIPTION:

We are delighted to offer this two-bedroom ground floor flat with direct access to a stunning private rear garden.

Portsdown Avenue is located between Golders Green Road and Finchley Road and is situated close to all shops, local amenities and transport facilities both in Golders Green and Temple Fortune. Accommodation comprises, two double bedrooms, two bathrooms (one ensuite) a guest WC, a large living room and a separate fully built in kitchen. The private rear garden measures approximately 49' x 24'.

A major benefit of the flat is that it has a long lease and low outgoings. That combined with high ceilings, bright and spacious rooms and a separate kitchen make this a perfect flat for someone looking to downsize or for a young family looking for a large flat with outside space.

Viewing is highly recommended.

AT A GLANCE

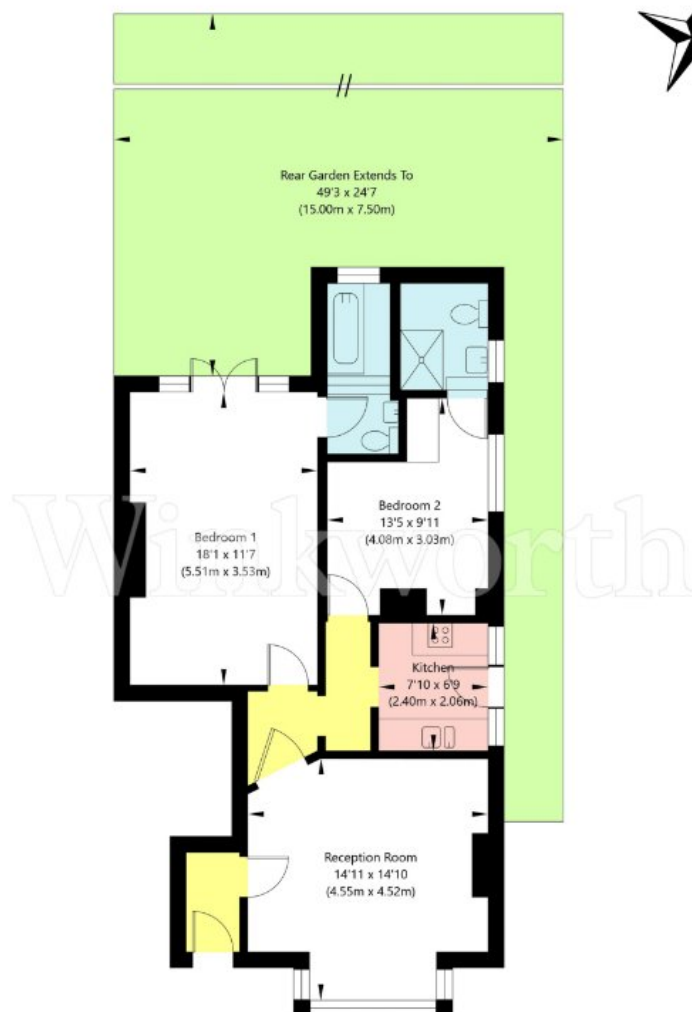
- GROUND FLOOR WITH DIRECT ACCESS TO GARDEN
- TWO BEDROOMS
- TWO BATHROOMS (ONE EN-SUITE)
- OWN ENTRANCE
- LEASEHOLD
- CHAIN FREE





Portsmouth Avenue, London NW11 0ND

Ground Floor
GROSS INTERNAL FLOOR AREA
APPROX. 70.34 SQ M / 757 SQ FT



APPROXIMATE GROSS INTERNAL FLOOR AREA 70.34 SQ M / 757 SQ FT
THIS FLOOR PLAN IS FOR ILLUSTRATIVE PURPOSES ONLY AND
SHOULD BE USED FOR THIS PURPOSE BY PROSPECTIVE APPLICANTS AS ITS NOT TO SCALE.

(c) AMBERSHORE PIX LIMITED / PHOTO - VIDEO - FLOOR PLANS / 0800 999 1577 / WWW.AMBERSHOREPIX.CO.UK

This floorplan is for illustration purposes only and is not to scale. The position and size of doors, windows, appliances and other features are approximate.

Tenure: Leasehold

Term: 150 year and 11 months

Service Charge: Only Building insurance TBC

Ground Rent: £5 PA

Council Tax Band: D

Where no figures are shown, we have been unable to ascertain the information. All figures that are shown were correct at the time of printing.

Golders Green | 020 8458 8313 | goldersgreen@winkworth.co.uk

Winkworth

for every step...

winkworth.co.uk

Winkworth wishes to inform prospective buyers and tenants that these particulars are a guide and act as information only. All our details are given in good faith and believed to be correct at the time of printing but they don't form part of an offer or contract. No Winkworth employee has authority to make or give any representation or warranty in relation to this property. All fixtures and fittings, whether fitted or not are deemed removable by the vendor unless stated otherwise and room sizes are measured between internal wall surfaces, including furnishings.