



18, OXBRIDGE COURT, OXFORD ROAD NORTH, CHISWICK, LONDON, W4
£399,950 LEASEHOLD

TWO BEDROOM SECOND FLOOR PURPOSE BUILT FLAT

Chiswick | 020 8994 7096 | chiswick@winkworth.co.uk

Winkworth

for every step...

winkworth.co.uk



DESCRIPTION:

Currently arranged as a 2 bedroom flat with open planned kitchen reception Two double bedrooms and bathroom with Shower. The property offers plenty of natural light and good ample storage.

Conveniently located for the A4 and M4 and within easy walking distance of Gunnersbury tube station and Chiswick High Road.



Winkworth

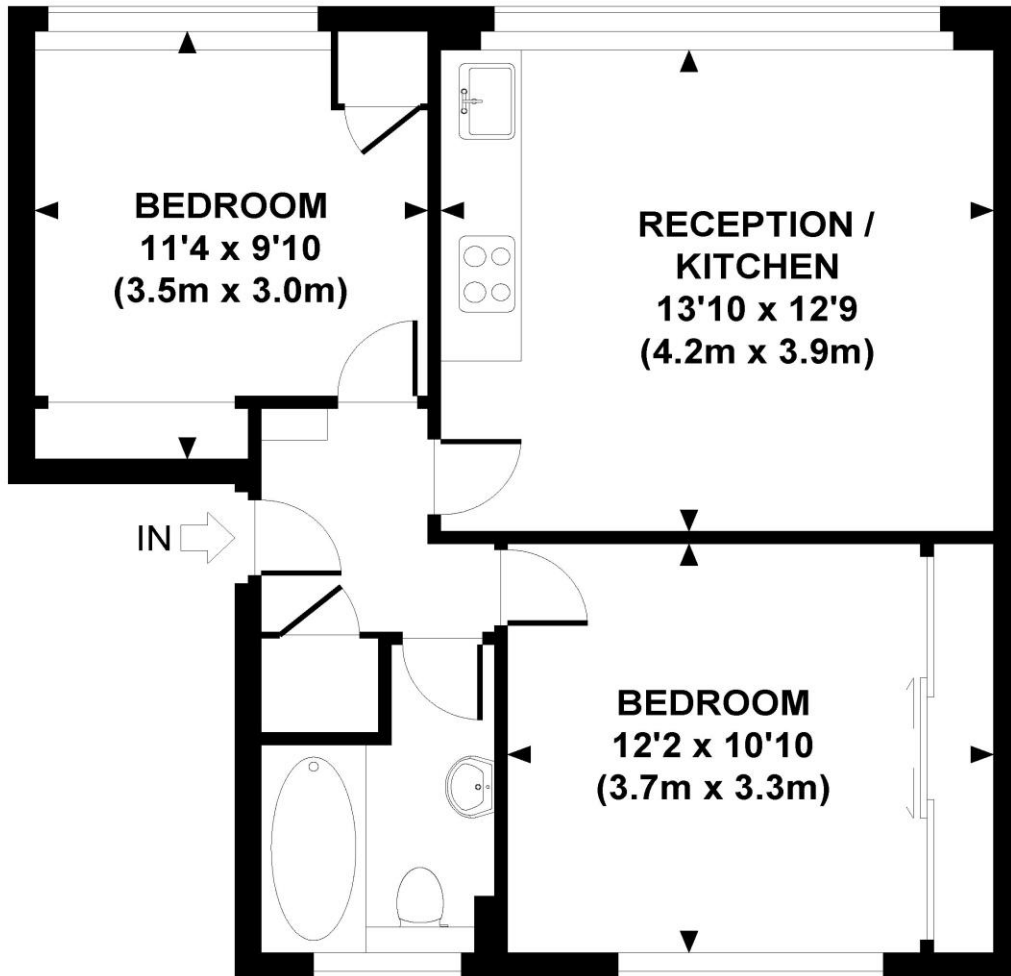
for every step...



Winkworth

for every step...

Oxbridge Court, W4



THIRD FLOOR

APPROXIMATE GROSS INTERNAL AREA 512 SQ FT / 47.6 SQ M

Whilst every attempt has been made to ensure the accuracy of this floor plan; measurements of door, windows, rooms and all other items are approximate. No responsibility is taken for any error, omission or mis-statement. This floor plan is for illustrative purposes only, and should be treated as such.

This floorplan is for illustration purposes only and is not to scale. The position and size of doors, windows, appliances and other features are approximate.

Chiswick | 020 8994 7096 | chiswick@winkworth.co.uk

Winkworth

for every step...

winkworth.co.uk

Winkworth wishes to inform prospective buyers and tenants that these particulars are a guide and act as information only. All our details are given in good faith and believed to be correct at the time of printing but they don't form part of an offer or contract. No Winkworth employee has authority to make or give any representation or warranty in relation to this property. All fixtures and fittings, whether fitted or not are deemed removable by the vendor unless stated otherwise and room sizes are measured between internal wall surfaces, including furnishings.