

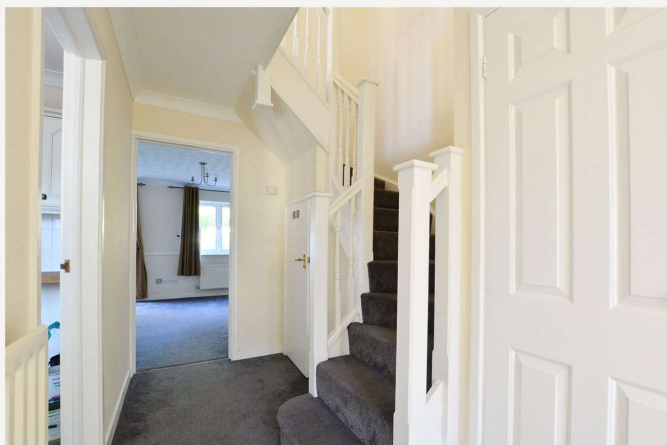


Hainault Street, SE9

£2,050 per month *Unfurnished*

3  1  2 

A beautifully presented three-bedroom family home with off-street parking, ideally located close to New Eltham station and local amenities. Offered unfurnished and available immediately, your earliest viewing is advised.

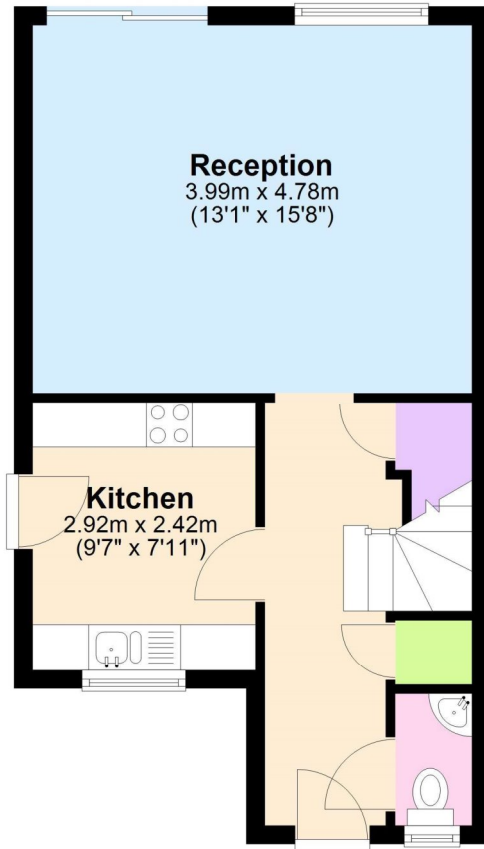


Blackheath

0208 8520999 | blackheath@winkworth.co.uk

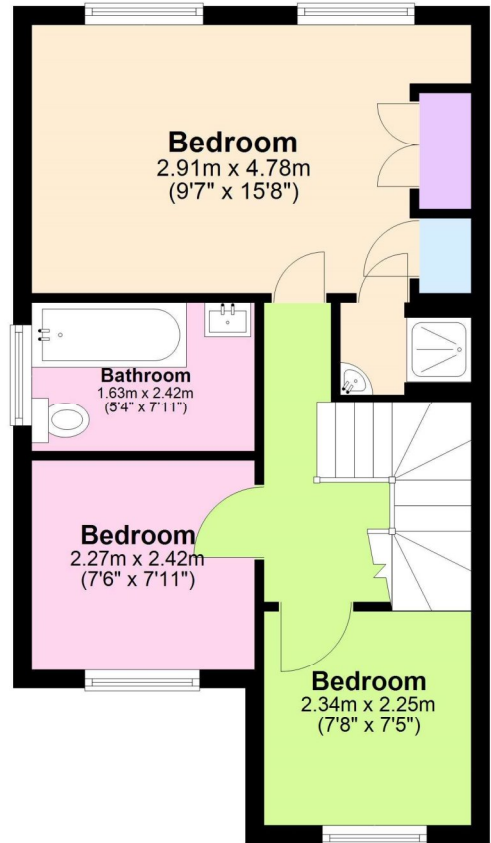
Ground Floor

Approx. 37.1 sq. metres (399.5 sq. feet)



First Floor

Approx. 37.3 sq. metres (401.8 sq. feet)



Total area: approx. 74.4 sq. metres (801.3 sq. feet)

MATERIAL INFO

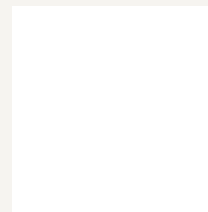
Deposit: £2,365.38

Holding Deposit:

Council Tax Band:

EPC rating: D

For more information, scan the QR code or visit the link below



<https://www.winkworth.co.uk/rent/property/BLA250650>

Where no figures are shown, we have been unable to ascertain the information. All figures that are shown were correct at the time of printing.

Blackheath

0208 8520999 | blackheath@winkworth.co.uk