



ST JOHNS AVENUE, LONDON, NW10  
**£395,000 LEASEHOLD**

**A WELL PRESENTED TWO DOUBLE BEDROOM, FIRST FLOOR  
FLAT IN A PERIOD CONVERSION OFFERED WITH NO  
UPPER-CHAIN.**

Kensal Rise & Queens Park | 0208 960 4947 | [kensalrise@winkworth.co.uk](mailto:kensalrise@winkworth.co.uk)





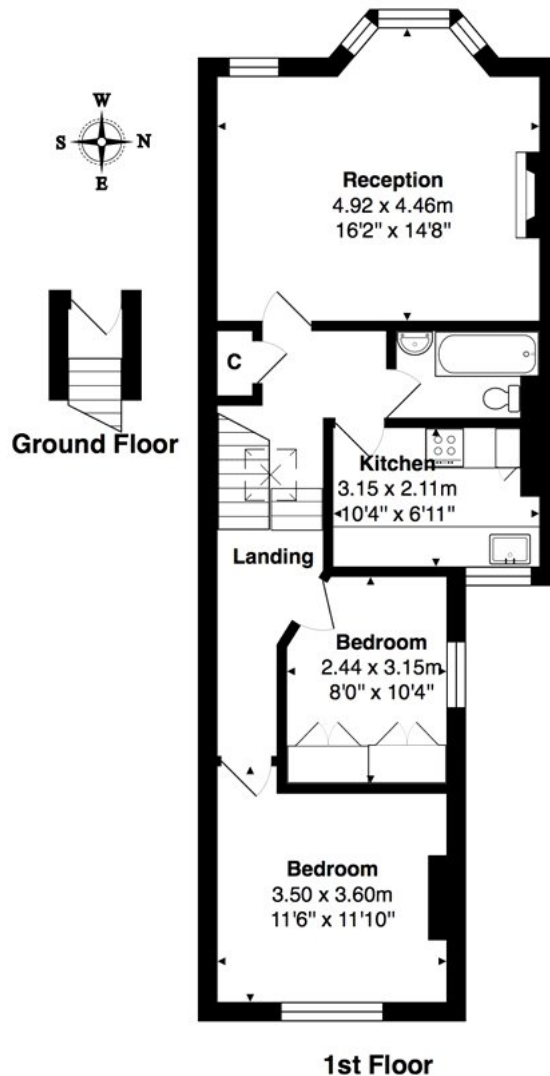
## LOCATION:

Located in a desirable area, this flat is within easy reach of an array of local amenities, private and state schools, walking distance to Overground & Tube lines, as well as popular recreational spaces such as Roundwood Park.



**Winkworth**





**Total Area: 62.4 m<sup>2</sup> ... 672 ft<sup>2</sup>**  
 All measurements are approximate and for display purposes only

**DESCRIPTION:**

This flat offers both period charm and modern fittings. It comprises a full width front reception and dining room with Sash bay window and stunning feature fire place. The kitchen is separate with ample cupboard storage and counter space. The bathroom is a tiled three-piece suite, with the two bedrooms both offered as doubles, with the second bedroom benefitting from fitted wardrobes.

The property is also offered with the loft space demised, long leasehold tenure and no upper-chain.

