



ELGIN AVENUE, LONDON, W9 £750,000 SHARE OF FREEHOLD

Winkworth Maida Vale has the pleasure of offering this bright and spacious (approx. 832 sq ft) two double bedroom top-floor apartment, requiring some updating. With its entrance on the second floor, the property forms part of an attractive, converted red-brick Victorian house located on the corner of Widley Road and Elgin Avenue. The apartment benefits from dual-aspect views, allowing for an abundance of natural light, and boasts well-proportioned accommodation, including a spacious reception room, kitchen, two double bedrooms, a bathroom suite, and a large entrance hall. Elgin Avenue is situated in the heart of this fashionable area, close to all local amenities, including boutique shops and cafés. Paddington Recreation Ground (approximately 0.2 miles) offers an outstanding children's play area, tennis courts, and running tracks. Maida Vale Underground Station (Bakerloo line) is approximately 0.4 miles away.

Two Bedroom | Bathroom Suite | Reception Room | Kitchen | Entrance Hall | Leasehold

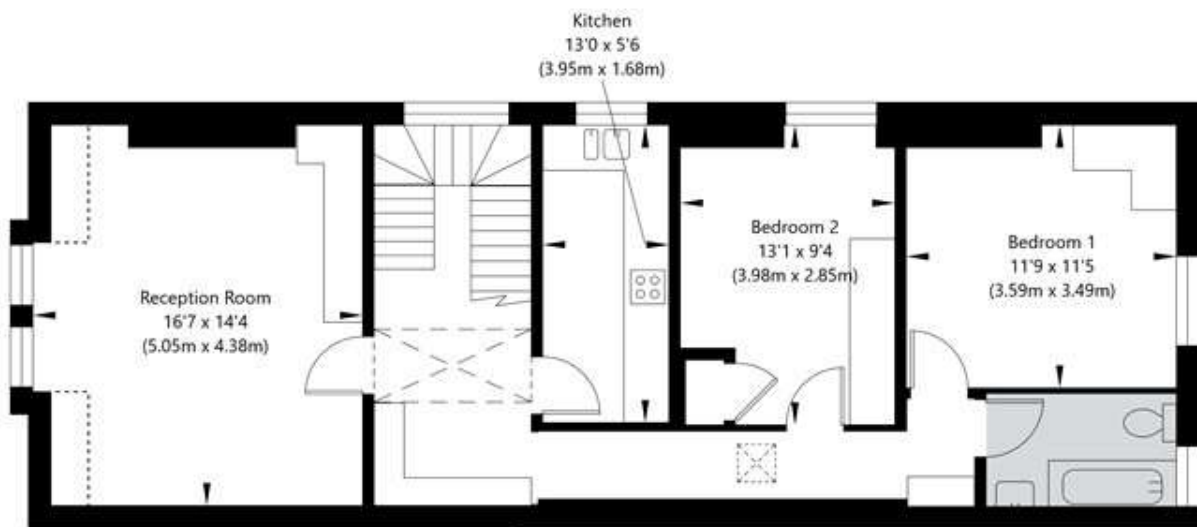
Winkworth

for every step...

[winkworth.co.uk/maida-vale](https://www.winkworth.co.uk/maida-vale)



Elgin Avenue, London W9 2NR



Third Floor
GROSS INTERNAL FLOOR AREA
APPROX. 76.08 SQ M / 819 SQ FT



Second Floor Entrance
GROSS INTERNAL FLOOR AREA
APPROX. 1.23 SQ M / 13 SQ FT

APPROXIMATE GROSS INTERNAL FLOOR AREA 77.31 SQ M / 832 SQ FT
THIS FLOOR PLAN IS FOR ILLUSTRATIVE PURPOSES ONLY AND
SHOULD BE USED FOR THIS PURPOSE BY PROSPECTIVE APPLICANTS AS ITS NOT TO SCALE.



Tenure: Share Of Freehold

Term: Expires - 29/09/2079 (New lease will be granted on completion, existing lease + 90 years)

Service Charge: £2,830 per annum – Includes contribution to a sinking fund

Ground Rent: £0 Annually

Council Tax Band: D

Where no figures are shown, we have been unable to ascertain the information. All figures that are shown were correct at the time of printing.

Where no figures are shown, we have been unable to ascertain the information. All figures that are shown were correct at the time of printing. These particulars are not an offer or contract, nor part of one. You should not rely on statements by Winkworth in the particulars or by word of mouth or in writing "information" as being factually accurate about the property, its condition or its value. Winkworth does not have any authority to make any representations about the property, and accordingly any information given is entirely without responsibility on the part of the agents, seller(s) or lessor(s). These particulars are prepared on the basis of the information supplied by our client and are a rough guide for information only. The photographs show only certain parts of the property. We are not able to check all of the information and therefore are unable to guarantee accuracy. All interested parties are therefore advised to undertake all necessary inspections and checks that they deem appropriate. Where displayed, the square footage is taken from the floor plans, which are created by an independent supplier. These measurements are approximate and included for illustrative purposes only. The measurements may vary. Winkworth does not make any representation as to the accuracy of these measurements and you should seek to verify them for yourself. Winkworth accept no liability for any loss you may suffer if you rely on these measurements. All fixtures and fittings, whether fitted or not are deemed removable by the vendor unless stated. Any reference to alterations to, or use of, any part of the property does not mean that any necessary planning, building regulations or other consent has been obtained. Amenities and appliances have not been tested

Maida Vale | 211-213 Sutherland Avenue, London, W9 1RU | 020 7289 1692 |
maidavale@winkworth.co.uk

Winkworth

for every step...

winkworth.co.uk/maida-vale

Winkworth wishes to inform prospective buyers and tenants that these particulars are a guide and act as information only. All our details are given in good faith and believed to be correct at the time of printing but they don't form part of an offer or contract. No Winkworth employee has authority to make or give any representation or warranty in relation to this property. All fixtures and fittings, whether fitted or not are deemed removable by the vendor unless stated otherwise and room sizes are measured between internal wall surfaces, including furnishings.