



BRICK LANE, LONDON, E1
£650,000 LEASEHOLD

A 909 SQ. FT. TWO BEDROOMS, TWO BATHROOMS APARTMENT ON TRENDY BRICK LANE

Shoreditch | 020 7749 7650 | shoreditch@winkworth.co.uk

Winkworth

winkworth.co.uk

See things differently



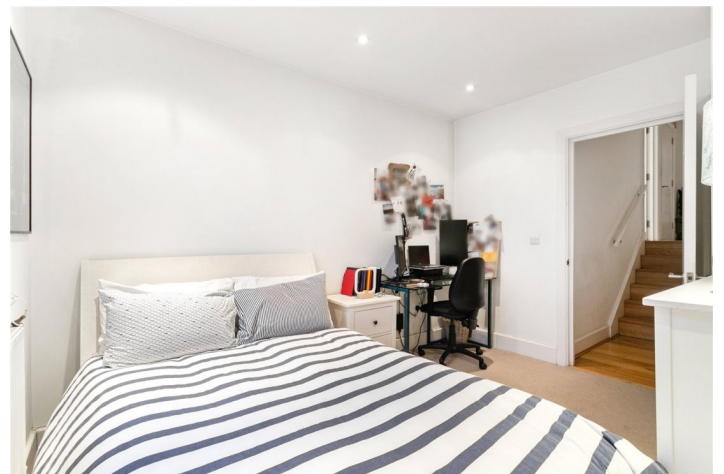
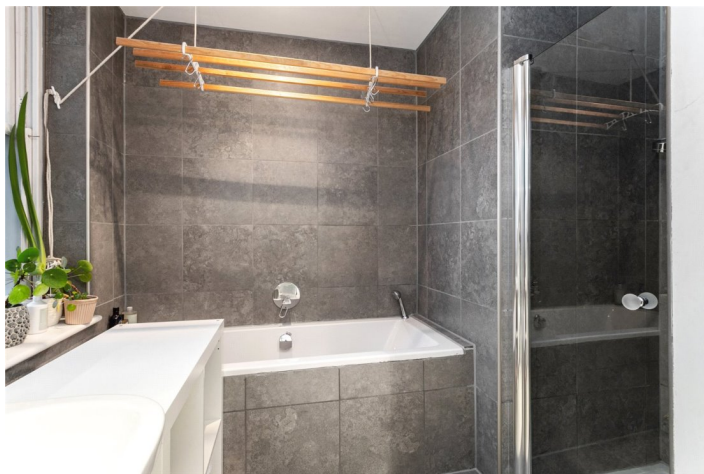
DESCRIPTION:

A stunning East and West facing apartment set over second floor of a period building on Brick Lane. The apartment comprises a substantial 'L' shaped lounge and kitchen/diner with two large windows at either end, flooding the space with natural light. The large hallway features ample storage that leads to a family bathroom and two bedrooms, with the principal benefitting from an en suite shower room and WC.

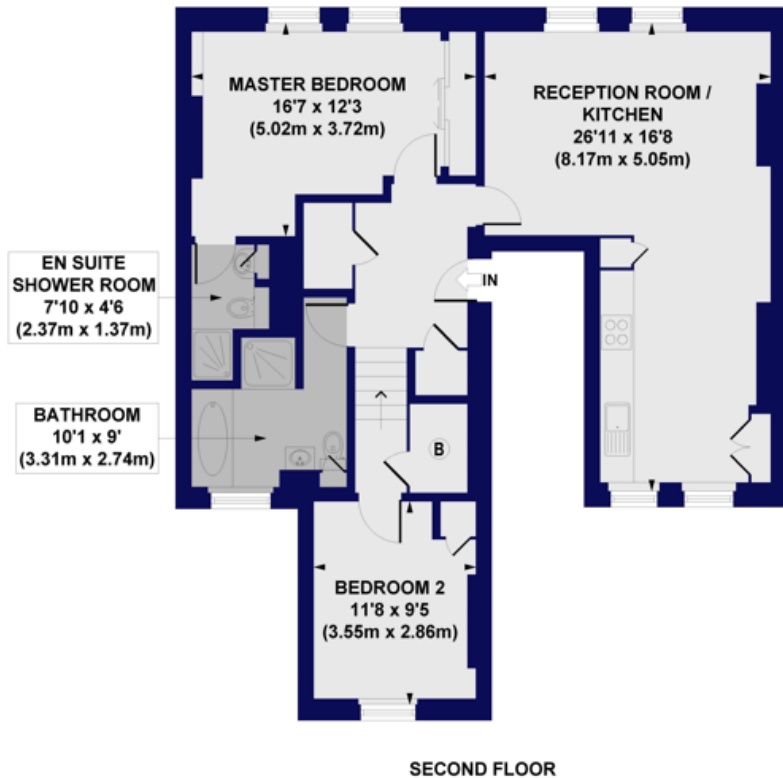
The apartment is extremely well positioned for those looking to be close to all the shops, bars and restaurants that the Spitalfields Market, Truman Brewery and its surrounding area has to offer. A nearby attraction now also includes the new Banksy artwork of three hanging monkeys over the Shoreditch High Street Station bridge.

On the edge of the City, the property is also 0.4 miles to Aldgate East station, London Liverpool Street station (Elizabeth line, Circle, District, Central Hammersmith & City tube lines, and overland) and 0.5 miles to Shoreditch High Street (Overground) stations.

Winkworth



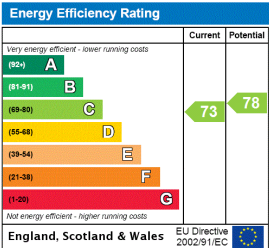
Brick Lane, E1
Approx. Gross Internal Floor Area 909 sq. ft / 84.46 sq. m



All measurements of walls, doors, windows, fittings and appliances, including their size and location, are shown as standard sizes and do not constitute any warranty or representation by the seller, their agent or CP Creative. Any intending purchaser must satisfy himself by inspection or otherwise as to the correctness of the information contained in these plans. This plan is for illustrative purposes only and should be used as such by any prospective purchasers.

Winkworth

This floorplan is for illustration purposes only and is not to scale. The position and size of doors, windows, appliances and other features are approximate.



Shoreditch | 020 7749 7650 | shoreditch@winkworth.co.uk



winkworth.co.uk

See things differently

Winkworth wishes to inform prospective buyers and tenants that these particulars are a guide and act as information only. All our details are given in good faith and believed to be correct at the time of printing but they don't form part of an offer or contract. No Winkworth employee has authority to make or give any representation or warranty in relation to this property. All fixtures and fittings, whether fitted or not are deemed removable by the vendor unless stated otherwise and room sizes are measured between internal wall surfaces, including furnishings.