



SHAWBURY COURT, LORDSHIP LANE, EAST DULWICH, SE22
£425,000 LEASEHOLD

A CHARMING, SPACIOUS APARTMENT SITUATED ON LORDSHIP LANE. THIS LOVELY APARTMENT IS OFFERED TO THE MARKET CHAIN FREE.

DESCRIPTION:

A charming, spacious apartment situated on Lordship Lane. This lovely apartment is offered to the market chain free. Boasting a spacious open-plan kitchen reception, a fully fitted kitchen, a dining area, and a living room. The bedroom, originally two smaller rooms has been converted into a spacious principal room, boasting built-in wardrobes and views over the neighbouring gardens to the rear. The property further boasts a security door communal entrance, communal balcony, a private residential parking space and within easy reach to everything Lordship Lane has to offer. Transport links are provided via East Dulwich station for direct links to London Bridge and Croydon. A short bus ride to Denmark Hill provides access to the overground with multiple connections to most London terminals.

Dulwich | 020 8299 2722 | dulwich@winkworth.co.uk

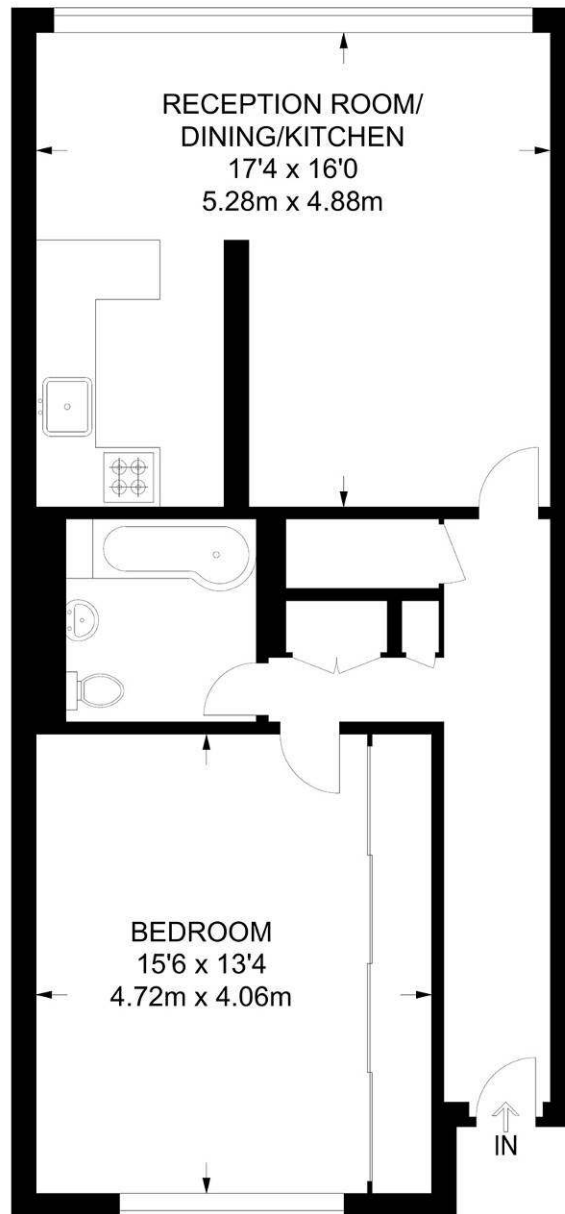
AT A GLANCE

- One Bedroom
- Apartment
- Open-Plan Kitchen-Reception
- Fully Fitted Kitchen
- Communal Balcony
- Chain Free

Winkworth



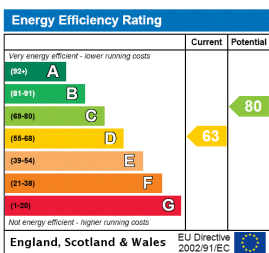




SECOND FLOOR

**APPROXIMATE GROSS INTERNAL AREA
667 SQ FT / 62 SQ M**

This floorplan is for illustration purposes only and is not to scale. The position and size of doors, windows, appliances and other features are approximate.



Dulwich | 020 8299 2722 | dulwich@winkworth.co.uk



winkworth.co.uk

See things differently

Winkworth wishes to inform prospective buyers and tenants that these particulars are a guide and act as information only. All our details are given in good faith and believed to be correct at the time of printing but they don't form part of an offer or contract. No Winkworth employee has authority to make or give any representation or warranty in relation to this property. All fixtures and fittings, whether fitted or not are deemed removable by the vendor unless stated otherwise and room sizes are measured between internal wall surfaces, including furnishings.