



**TUDOR GABLES, MILL HILL, LONDON NW7  
£550,000 SHARE OF FREEHOLD**

**A SPACIOUS AND WELL PRESENTED THREE  
BEDROOM, TWO BATHROOM DUPLEX MAISONETTE  
IN A SOUGHT AFTER RESIDENTIAL LOCATION**

Finchley | 020 8349 3388 | [finchley@winkworth.co.uk](mailto:finchley@winkworth.co.uk)

**Winkworth**

for every step...

[winkworth.co.uk](http://winkworth.co.uk)





## DESCRIPTION:

We are pleased to offer to the market, this three bedroom, two bathroom duplex maisonette arranged over first and second floors and located in the sought after Poet's Corner, within easy access of Mill Hill Broadway amenities and transport links.

The property is presented in very good decorative order throughout and provides c. 1,141 sq. ft. of living accommodation.

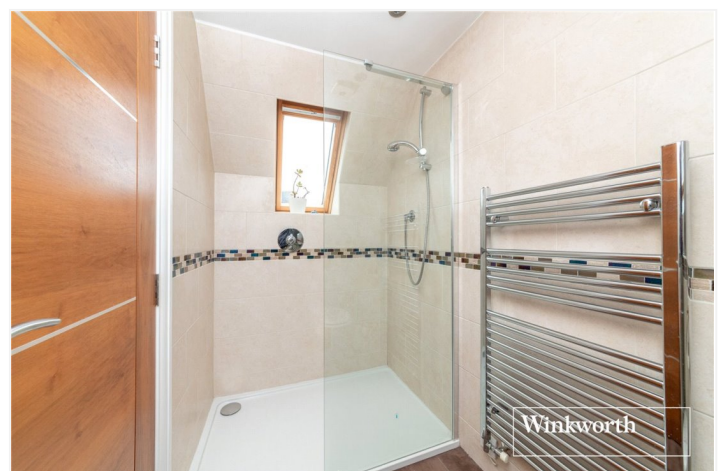
This wonderful maisonette comprises a spacious living area, modern fitted kitchen, two double bedrooms together with family bathroom at first floor, while on the second floor, there is a wonderful master bedroom with en-suite shower room.

Further benefits include: a Share of the Freehold and direct access to communal gardens and garage.

An internal viewing is highly recommended.

## AT A GLANCE

- THREE BEDROOM, TWO BATHROOM DUPLEX MAISONETTE
- ARRANGED OVER FIRST AND SECOND FLOORS
- PRESENTED IN VERY GOOD DECORATIVE ORDER THROUGHOUT
- LIVING ACCOMMODATION EXTENDS TO C. 1,141 SQ. FT.
- MODERN FITTED KITCHEN AND BATHROOM
- DIRECT ACCESS TO COMMUNAL GARDENS
- GARAGE







Winkworth



Winkworth



Winkworth



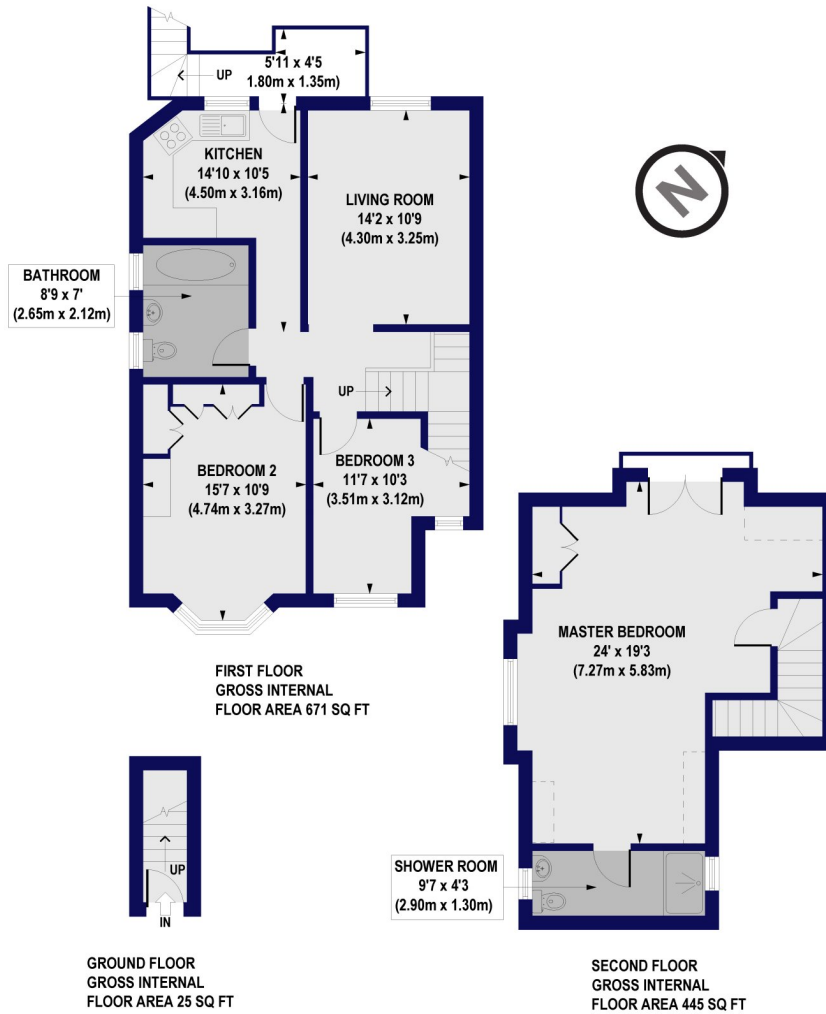
Winkworth



Winkworth



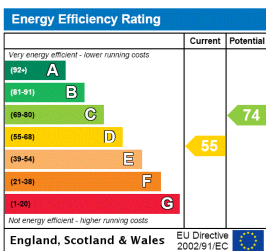
**Tudor Gables Birkbeck Road, NW7**  
**Approx. Gross Internal Floor Area 1141 sq. ft / 106.04 sq. m**



All measurements of walls, doors, windows, fittings and appliances, including their size and location, are shown as standard sizes and do not constitute any warranty or representation by the seller, their agent or CP Creative. Any intending purchaser must satisfy himself by inspection or otherwise as to the correctness of the information contained in these plans. This plan is for illustrative purposes only and should be used as such by any prospective purchasers.

**Winkworth**

This floorplan is for illustration purposes only and is not to scale. The position and size of doors, windows, appliances and other features are approximate.



**Winkworth**

Finchley | 020 8349 3388 | finchley@winkworth.co.uk

for every step...

winkworth.co.uk

Winkworth wishes to inform prospective buyers and tenants that these particulars are a guide and act as information only. All our details are given in good faith and believed to be correct at the time of printing but they don't form part of an offer or contract. No Winkworth employee has authority to make or give any representation or warranty in relation to this property. All fixtures and fittings, whether fitted or not are deemed removable by the vendor unless stated otherwise and room sizes are measured between internal wall surfaces, including furnishings.