

Kingston House South, London, SW7
£1,770 Per Week

3  2  2 



Winkworth Knightsbridge & Chelsea
020 7589 6616 | knightsbridge@winkworth.co.uk

Winkworth
for every step...

Newly refurbished apartment with terrace south of Hyde Park.

ABOUT THIS FLAT

This recently refurbished three- bedroom apartment is available to let for the first time. The property has undergone full works, including a new kitchen and bathrooms. It provides three reception areas, one of which has a private east-facing balcony. All three bedrooms include built-in wardrobes, and the principal bedroom has an ensuite shower room with dual aspect windows. A second balcony, overlooking the gardens, is accessible

from the second bedroom. The building has a team of porters and has recently been refurbished. Residents benefit from communal gardens, and hot water and central heating are included.

****Please note:** Furniture in the photographs has been added digitally using CGI.

KEY FEATURES

- 3 bedrooms
- 2 reception room
- 2 bathrooms
- 1,371 Square Feet
- Upper floor with lift
- Porter/Concierge

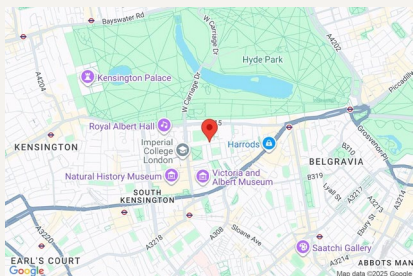










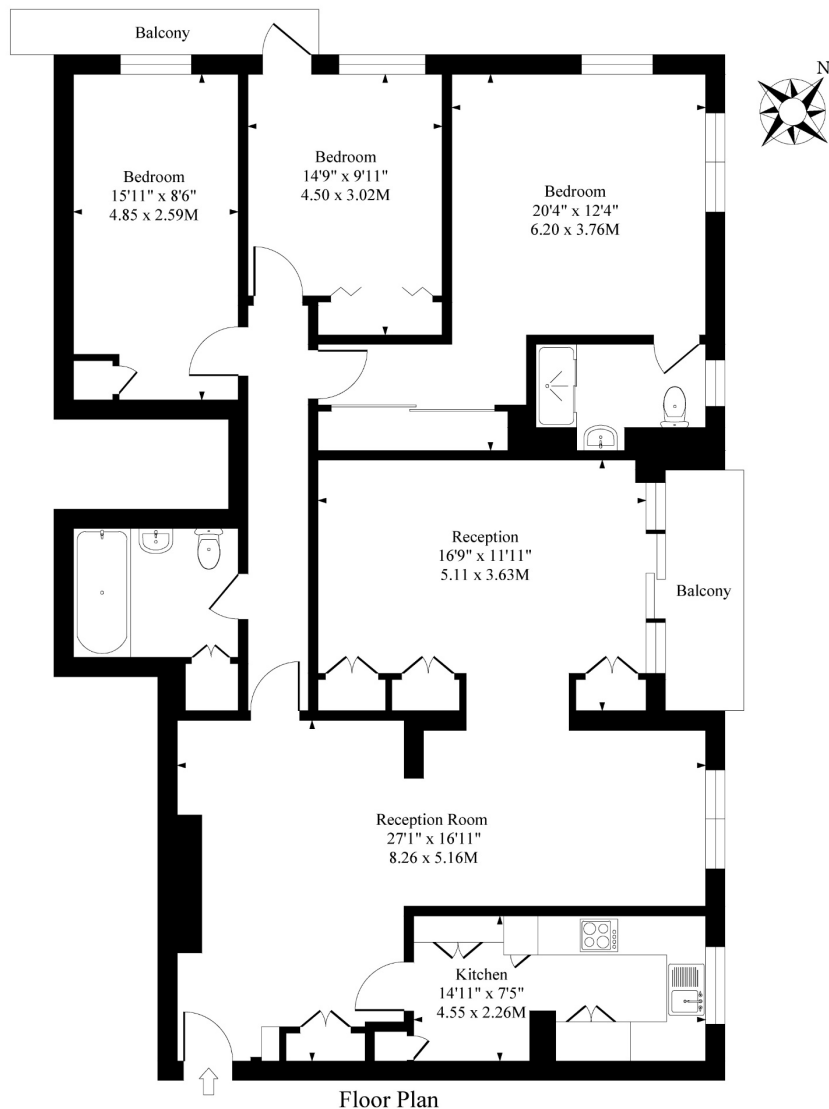


FINER DETAILS

- Holding Deposit: £1,770.00
- Deposit: £8,850.00
- EPC Rating: C
- Council Tax Band: H

Score	Energy rating	Current	Potential
92+	A		
81-91	B		
69-80	C	74 C	81 B
55-68	D		
39-54	E		
21-38	F		
1-20	G		

Kingston House South, Ennismore Gardens, SW7



Approximate Gross Internal Area 1371 Sq Ft - 127.37 Sq M

Measured in according with RICS guidelines. Every attempt is made to ensure accuracy

However all measurments are approximate.

The floor plan is illustrative purposes only and is not to scale



Winkworth Knightsbridge & Chelsea
020 7589 6616 | knightsbridge@winkworth.co.uk

Winkworth

for every step...