



Achilles Road, NW6

£2,500,000 *Freehold*

6  1  3 

A beautifully newly refurbished and extended six-bedroom family home located on the highly regarded Achilles Road. Finished to an exceptional standard throughout, this impressive property offers generous, light-filled living and entertaining spaces, complemented by a high-specification kitchen and stylish contemporary interiors. The well-designed extension creates a seamless flow for modern family living, while the home's layout provides both comfort and practicality. Ideally positioned close to excellent local schools, amenities, and transport links, this outstanding home is perfectly suited to families seeking quality, space, and convenience.



Winkworth West Hampstead

020 7483 7602 | westhampstead@winkworth.co.uk

Winkworth

for every step...



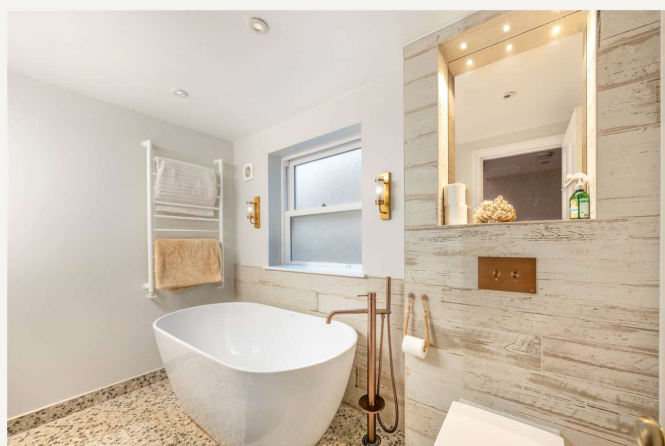
KEY FEATURES

- Six Double Bedrooms
- Family Bathroom
- Two Showers (One En - Suite)
- Kitchen/ Breakfast Room
- Guest Cloakroom
- Front Garden
- Rear Garden



MATERIAL INFO

Tenure: Freehold
Council Tax Band: G
EPC rating: D





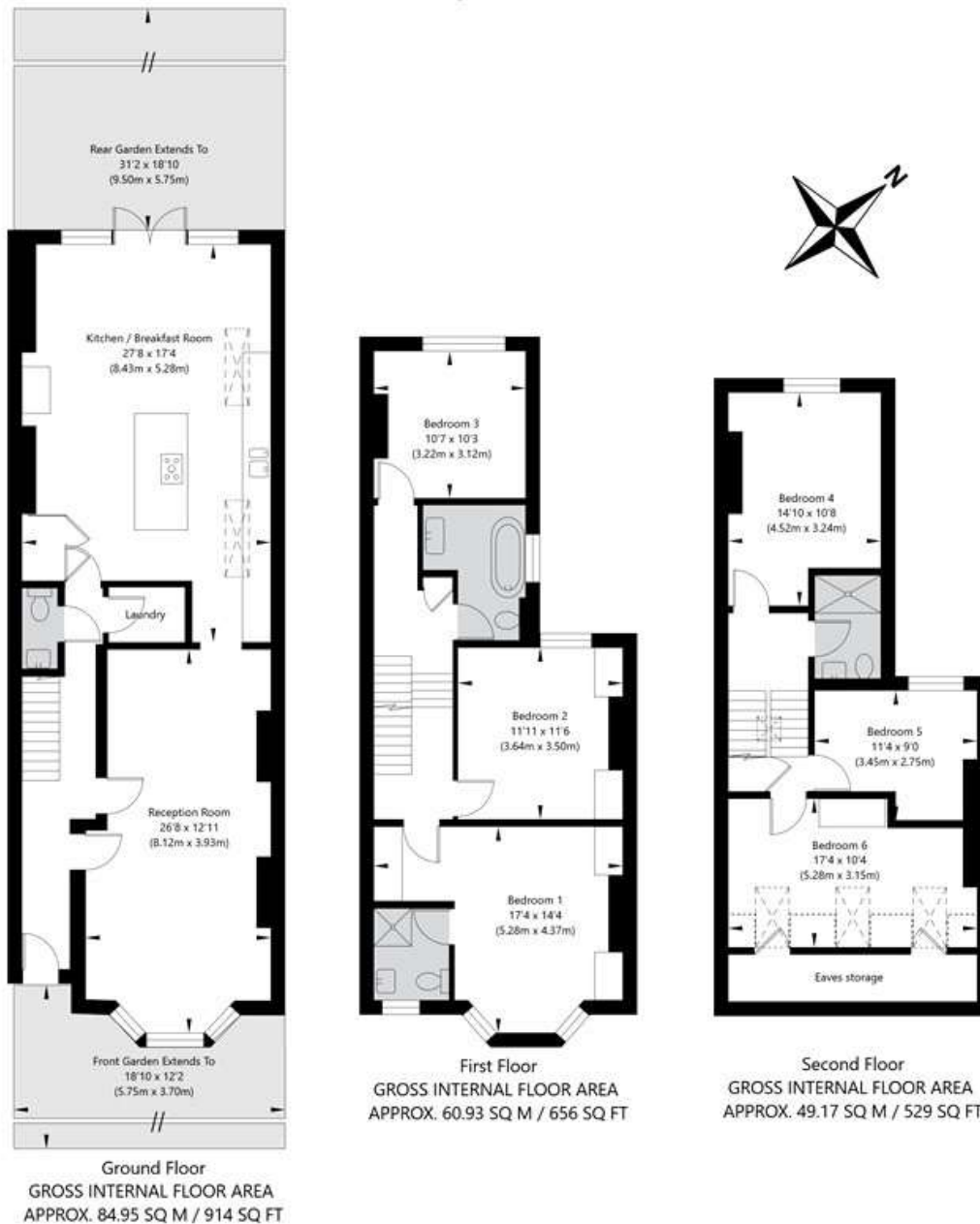
Score	Energy rating	Current	Potential
92+	A		
81-91	B		83 B
69-80	C		
55-68	D	66 D	
39-54	E		
21-38	F		
1-20	G		

For more information, scan the QR code or visit the link below



<https://www.winkworth.co.uk/sale/property/WHP250077>

Achilles Road, London NW6 1EA



APPROXIMATE GROSS INTERNAL FLOOR AREA 195.05 SQ M / 2099 SQ FT
APPROXIMATE GROSS INTERNAL FLOOR AREA EXCLUDING RESTRICTED HEIGHT 192.92 SQ M / 2076 SQ FT

THIS FLOOR PLAN IS FOR ILLUSTRATIVE PURPOSES ONLY AND
SHOULD BE USED FOR THIS PURPOSE BY PROSPECTIVE APPLICANTS AS ITS NOT TO SCALE.

(c) AMBERSHORE PIX LIMITED / PHOTO - VIDEO - FLOOR PLANS / 0800 999 1577 / WWW.AMBERSHOREPIX.CO.UK

Where no figures are shown, we have been unable to ascertain the information. All figures that are shown were correct at the time of printing.

Winkworth West Hampstead

020 7483 7602 | westhampstead@winkworth.co.uk

Winkworth

for every step...

Winkworth wishes to inform prospective buyers and tenants that these particulars are a guide and act as information only. All our details are given in good faith and believed to be correct at the time of printing but they don't form part of an offer or contract. No Winkworth employee has authority to make or give any representation or warranty in relation to this property. All fixtures and fittings, whether fitted or not are deemed removable by the vendor unless stated otherwise and room sizes are measured between internal wall surfaces, including furnishings.