

THRALE ROAD, SW16  
**£400,000 SHARE OF FREEHOLD**

## A ONE BEDROOM APARTMENT SITUATED IN THE SOUGHT AFTER AREA OF FURZEDOWN

Tooting | 020 8767 5221 | [tooting@winkworth.co.uk](mailto:tooting@winkworth.co.uk)

**Winkworth**

for every step...

[winkworth.co.uk](http://winkworth.co.uk)





### **DESCRIPTION:**

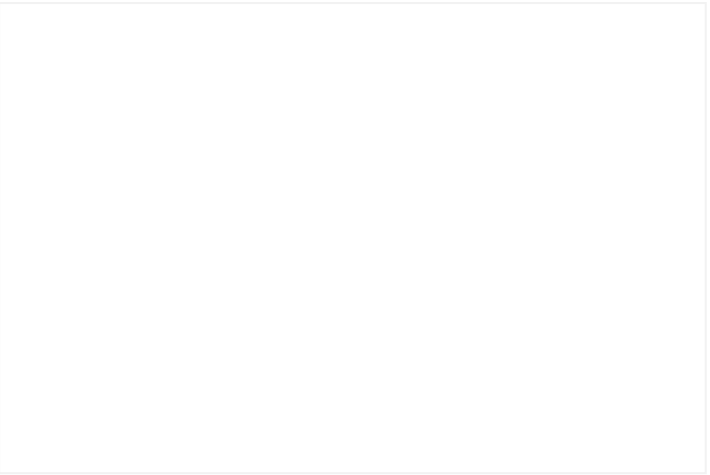
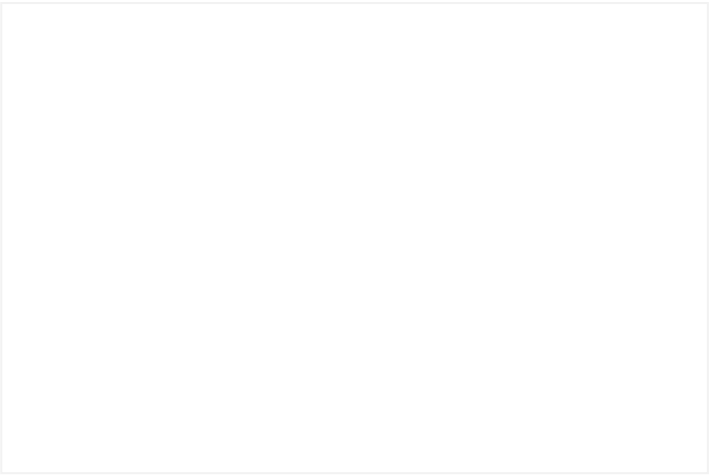
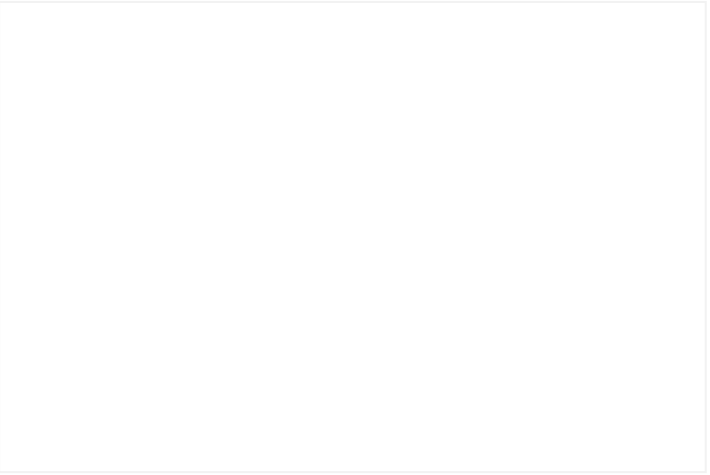
A beautifully presented, one bedroom apartment situated in the sought after area of Furzedown. The property is located on the first floor of a purpose built development.

The accommodation comprises of a good size kitchen, a large master bedroom with built in wardrobes, a family bathroom with a shower and a large reception room. Further benefits include off street parking to the rear, a private roof terrace and a communal garden with a heated swimming pool. The property will be sold with no onward chain.

Early viewings are highly recommended.

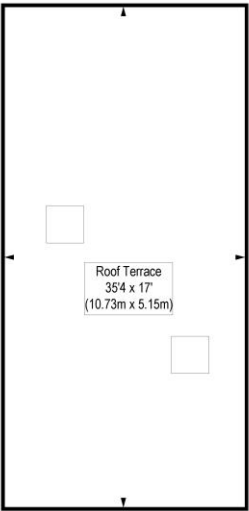
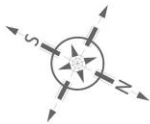
Thrale Road is situated within the highly acclaimed Furzedown location. A wide range of local amenities can be found within easy reach on Moyser Road and Tooting High Road. Transport links are found a short walk away at Tooting Bec Underground (Northern Line), Streatham Common (providing access to London Bridge, Victoria and Clapham Junction), and Streatham Overground Station (providing Thames Link services).



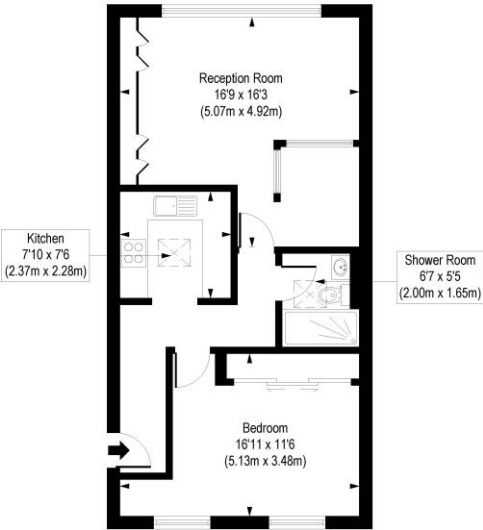


# Thrale Road, SW16

Approx. Gross Internal Floor Area 591 sq. ft / 54.89 sq. m



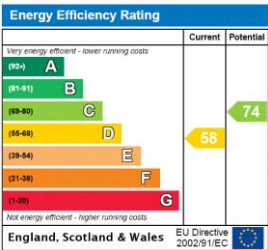
Second Floor



First Floor  
Gross Internal  
Floor Area 591 sq ft

COMPLIANT WITH RICS CODE OF MEASURING PRACTICE. Floorplan is for illustrative purposes only and is not to scale. Every attempt has been made to ensure the accuracy of the floorplan shown, however all measurements, fixtures, fittings and data shown are an approximate interpretation for illustrative purposes only. Liability for errors, omissions or mis-statement through negligence or otherwise is hereby excluded.

This floorplan is for illustration purposes only and is not to scale. The position and size of doors, windows, appliances and other features are approximate.



# Winkworth

for every step...

Tooting | 020 8767 5221 | tooting@winkworth.co.uk

winkworth.co.uk

Winkworth wishes to inform prospective buyers and tenants that these particulars are a guide and act as information only. All our details are given in good faith and believed to be correct at the time of printing but they don't form part of an offer or contract. No Winkworth employee has authority to make or give any representation or warranty in relation to this property. All fixtures and fittings, whether fitted or not are deemed removable by the vendor unless stated otherwise and room sizes are measured between internal wall surfaces, including furnishings.