



WATCHFIELD COURT, LONDON, W4
£450,000 LEASEHOLD

A SPACIOUS ONE BEDROOM GROUND FLOOR FLAT IN THIS FABULOUS LOCATION

Chiswick | 020 8994 7096 | chiswick@winkworth.co.uk

Winkworth

for every step...

winkworth.co.uk



DESCRIPTION:

This beautiful apartment on the ground floor of this sought-after period mansion block, just moments from the open spaces of Turnham Green.

The property offers a spacious living room with dining area, separate kitchen, good size double bedroom, a white bathroom and ample storage.

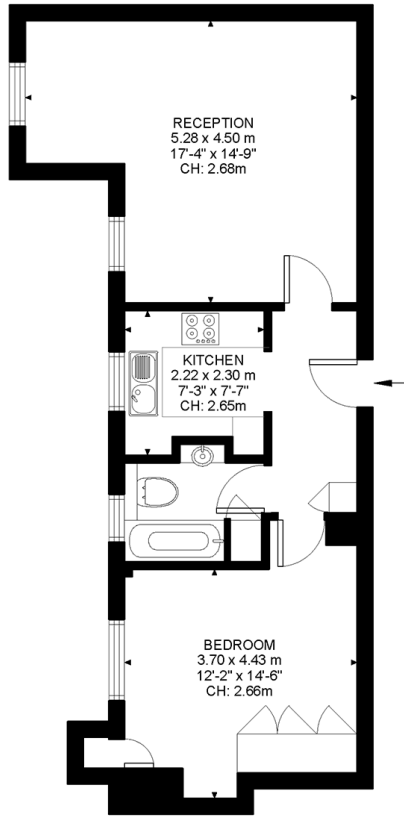
Further benefits include wooden flooring throughout, off street parking and heating and hot water included in the service charge.

Chiswick High Road is just a few steps away with its abundance of cafes, shops and restaurants, and Chiswick Park tube station is also within close proximity.

ACCOMMODATION

- Desirable mansion block
- Ground floor
- Good size reception room
- One double bedroom
- Central Turnham Green location
- Off street parking
- Over 525 sq feet
- Heating & hot water included
- No forward chain





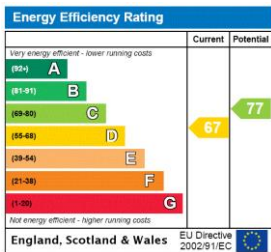
Ground Floor
526 ft²

Watchfield Court, W4
Approximate Gross Internal Area
48.89 SQ.M / 526 SQ.FT

KEY: CH = Ceiling Height
Restricted Head Height

Illustration for identification purposes only. Not to scale.
Floor Plan Drawn According To RICS Guidelines.

This floorplan is for illustration purposes only and is not to scale. The position and size of doors, windows, appliances and other features are approximate.



Chiswick | 020 8994 7096 | chiswick@winkworth.co.uk



for every step...

winkworth.co.uk

Winkworth wishes to inform prospective buyers and tenants that these particulars are a guide and act as information only. All our details are given in good faith and believed to be correct at the time of printing but they don't form part of an offer or contract. No Winkworth employee has authority to make or give any representation or warranty in relation to this property. All fixtures and fittings, whether fitted or not are deemed removable by the vendor unless stated otherwise and room sizes are measured between internal wall surfaces, including furnishings.