



DRAYCOTT AVENUE, HARROW, MIDDLESEX, HA3
OIEO £795,000 FREEHOLD, CHAIN FREE

DETACHED 3-BEDROOM HOUSE BEAUTIFULLY DECORATED THROUGHOUT!

Kingsbury | 020 8204 0000 | kingsbury@winkworth.co.uk



for every step...

winkworth.co.uk



DESCRIPTION: Welcome to this enchanting THREE-BEDROOM DETACHED HOUSE, a perfect blend of comfort and sophistication. Upon entering, you are greeted by a spacious and inviting living room adorned with tasteful decor that exudes warmth and style. Natural light floods the room, creating a bright and airy atmosphere. The separate dining area is perfect for hosting family gatherings, with access to the garden for indoor and outdoor fluidity. The kitchen boasts AMPLE STORAGE SPACE and combines functionality with elegance. Making your way to the upper floor you have THREE gorgeous bedrooms each decorated seamlessly with style and comfort plus excessive storage with fitted wardrobes. The family bathroom is a masterpiece of design, with gorgeous fixtures and meticulous attention to detail. Ascend to the loft, and you'll discover a versatile MULTIPURPOSE LOFT ROOM, that can be customized to suit your needs. To the exterior, you have practical amenities to enhance your everyday life. A LARGE GARAGE provides ample space for parking and storage, while OFF-STREET PARKING ensures convenience. KENTON, NORTHWICK PARK, AND PRESTON ROAD underground stations are close by to ensure easy commuting for all. Great schools within proximity like Mount Stewart Junior School and Olivier School. Please arrange a viewing today by giving us a call.



for every step...



Winkworth
for every step...



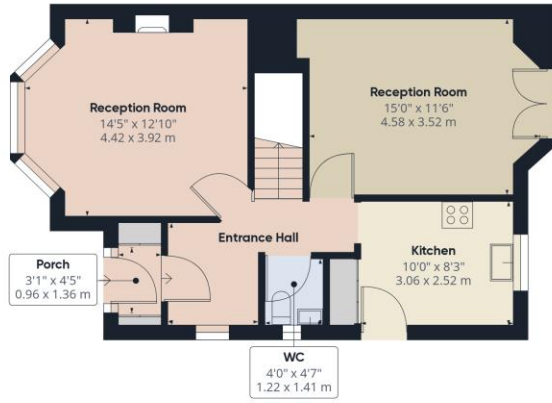
Winkworth
for every step...



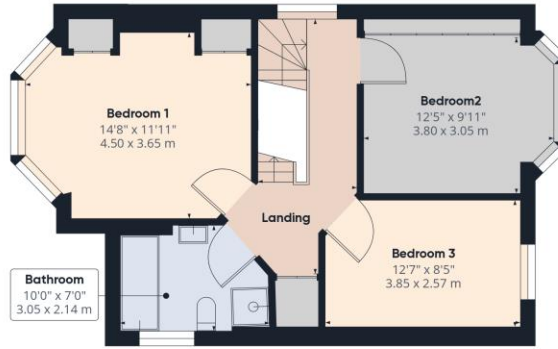
Winkworth
for every step...

Winkworth

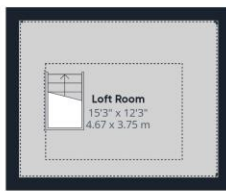
for every step...



Ground Floor Building 1



Floor 1 Building 1



Floor 2 Building 1



Ground Floor Building 2

Approximate total area¹⁾
1491.18 ft²
138.54 m²

Reduced headroom
269.74 ft²
25.06 m²

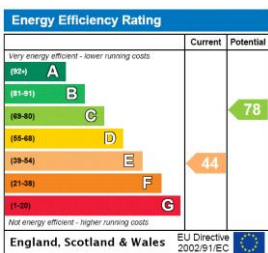
Excluding balconies and terraces

Reduced headroom (below 1.5m/4.92ft)

While every attempt has been made to ensure accuracy, all measurements are approximate, not to scale. This floor plan is for illustrative purposes only.

GIRAFFE360

This floorplan is for illustration purposes only and is not to scale. The position and size of doors, windows, appliances and other features are approximate.



Kingsbury | 020 8204 0000 | kingsbury@winkworth.co.uk



for every step...

winkworth.co.uk

Winkworth wishes to inform prospective buyers and tenants that these particulars are a guide and act as information only. All our details are given in good faith and believed to be correct at the time of printing but they don't form part of an offer or contract. No Winkworth employee has authority to make or give any representation or warranty in relation to this property. All fixtures and fittings, whether fitted or not are deemed removable by the vendor unless stated otherwise and room sizes are measured between internal wall surfaces, including furnishings.