



TRENDELL HOUSE, DOD STREET, LONDON, E14
£460,000 LEASEHOLD

A LARGE FOUR BEDROOM, SPLIT LEVEL APARTMENT WITH ITS OWN PRIVATE GARDEN

Shoreditch | 020 7749 7650 | shoreditch@winkworth.co.uk

Winkworth

winkworth.co.uk

See things differently



DESCRIPTION:

A sizeable, four-bedroom, split level maisonette positioned moments from local parks and amenities. Standing at a superb 1,018sqft, upon entering the property through your own front door, you are welcomed into the hallway leading to a wonderfully spacious reception room leading out to the 430sqft private, south-west facing garden. The separate kitchen is fully equipped with ample space for dining, while the first floor comprises of 4 bedrooms, a family bathroom and additional separate WC. The property is offered to the market on a chain free basis and a lease over 100 years.

The apartment is located on Dod Street, which is conveniently situated just 10 minutes from Westferry and Limehouse DLR stations and so is perfect for easy access to Canary Wharf or The City of London.

HMO Licensed

Winkworth

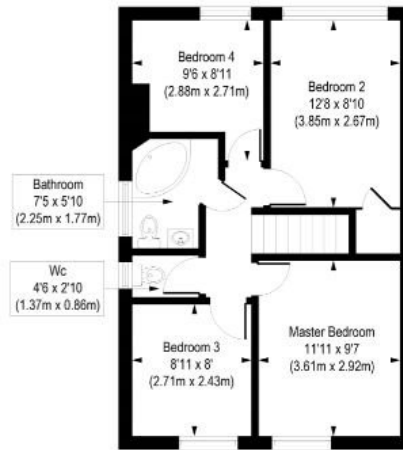


Winkworth

Trendell House, Dod Street, E14
 Approx. Gross Internal Floor Area 1018 sq. ft / 94.54 sq. m



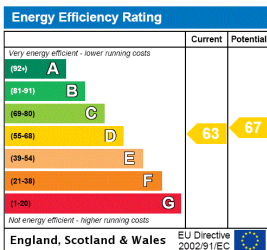
Ground Floor
 Gross Internal
 Floor Area 508 sq ft



First Floor
 Gross Internal
 Floor Area 510 sq ft

COMPLIANT WITH RICS CODE OF MEASURING PRACTICE. Floorplan is for illustrative purposes only and is not to scale. Every attempt has been made to ensure the accuracy of the floorplan shown, however all measurements, fixtures, fittings and data shown are an approximate interpretation for illustrative purposes only. Liability for errors, omissions or mis-statement through negligence or otherwise is hereby excluded.

This floorplan is for illustration purposes only and is not to scale. The position and size of doors, windows, appliances and other features are approximate.



Shoreditch | 020 7749 7650 | shoreditch@winkworth.co.uk



winkworth.co.uk

See things differently

Winkworth wishes to inform prospective buyers and tenants that these particulars are a guide and act as information only. All our details are given in good faith and believed to be correct at the time of printing but they don't form part of an offer or contract. No Winkworth employee has authority to make or give any representation or warranty in relation to this property. All fixtures and fittings, whether fitted or not are deemed removable by the vendor unless stated otherwise and room sizes are measured between internal wall surfaces, including furnishings.