



Winkworth



Winkworth



Winkworth

STANBOROUGH AVENUE, HERTFORDSHIRE, WD6
£535,000 FREEHOLD

THREE BEDROOM SEMI DETACHED HOUSE

Borehamwood | 020 8953 8899 | borehamwood@winkworth.co.uk



DESCRIPTION:

This three bedroom semi-detached family home is available on a chain free basis. Located on a popular Avenue on the Northside of Borehamwood. The property comprises of two reception rooms, fully fitted kitchen and guest w/c. Leading upstairs there are two double bedrooms and one single bedroom. The upstairs bathroom is fitted with both bath and separate shower. With off street parking for 2 cars and a private rear garden.



ACCOMMODATION

Entrance Hall

Kitchen

Reception Room

Dining Room

Kitchen

Bedroom

Bathroom

Approximate Gross Internal Area = 91.8 sq m / 988 sq ft

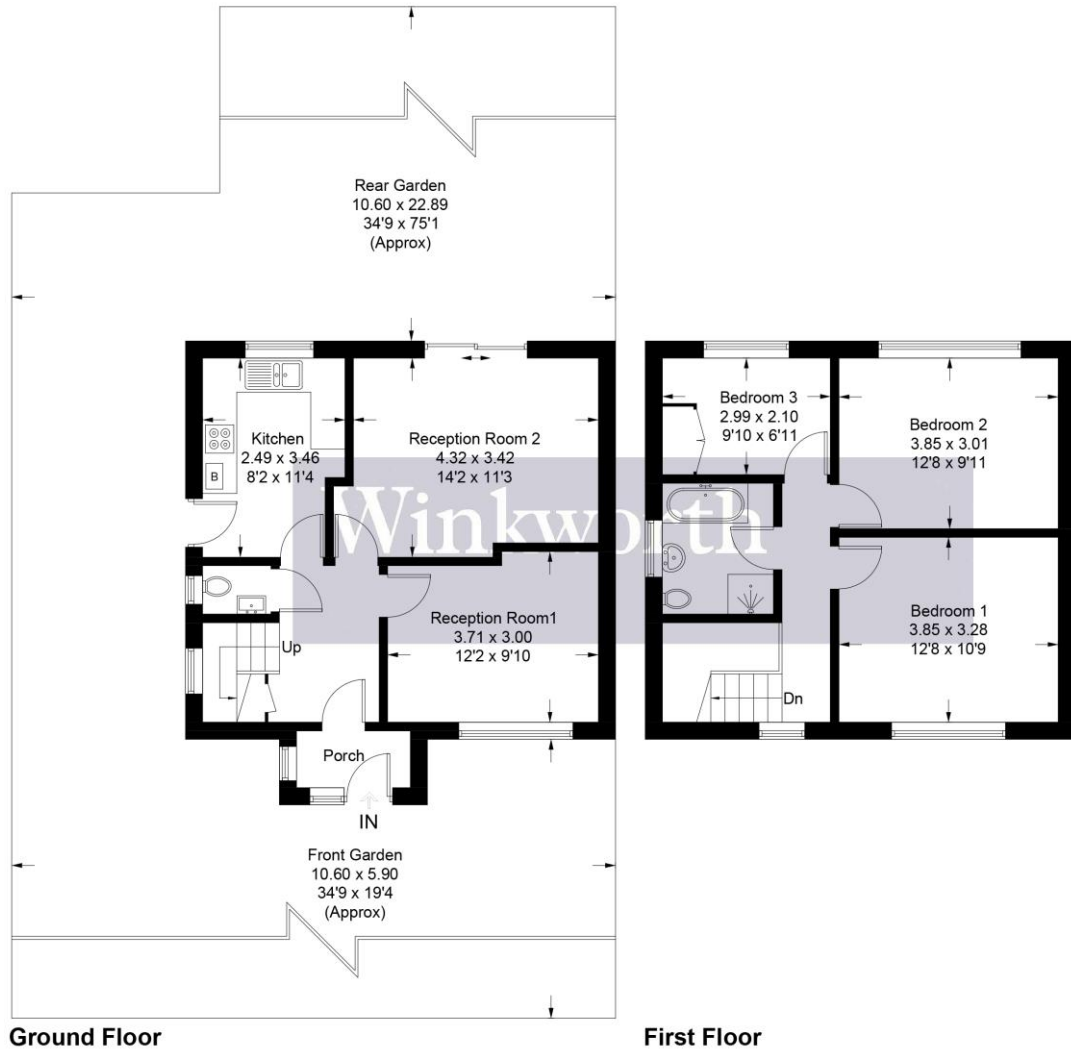
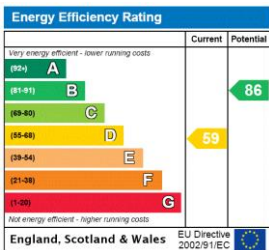


Illustration for identification purposes only, measurements are approximate, not to scale. Winkworth © 2023 (ID1025316)

This floorplan is for illustration purposes only and is not to scale. The position and size of doors, windows, appliances and other features are approximate.



Tenure: Freeholda
Term: Expires -
Service Charge: £0 per annum
Ground Rent: £ 0 Annually (subject to increase)
Council Tax Band:

Where no figures are shown, we have been unable to ascertain the information. All figures that are shown were correct at the time of printing.