



Winkworth



Winkworth



Winkworth

BULLHEAD ROAD, HERTFORDSHIRE, WD6
£675,000 FREEHOLD

STUNNING THREE BEDROOM SEMI DETACHED HOUSE ON THE SOUTH SIDE OF BOREHAMWOOD

Borehamwood | 020 8953 8899 | borehamwood@winkworth.co.uk



DESCRIPTION:

Located on the South side of Borehamwood, a short walk from the highly regarded Monksmead primary and Yavneh Primary and Secondary Schools is this beautifully presented three bedroom semi-detached family house.

Having historically been subject to a double story rear extension the property provides in excess of 1100 square feet of well-proportioned accommodation comprising of three bedrooms, upstairs bathroom, two reception areas, kitchen as well as a downstairs shower room/wc.

Externally there is a secluded rear garden complete with garden office and off street parking for 2 cars.

AT A GLANCE

- 3 Bedrooms
- Entrance Hall
- Shower Room
- Living Room
- Kitchen Dining Room
- Bathroom
- Studio
- Garden





Winkworth



Winkworth



Winkworth



Winkworth



Winkworth

Approximate Gross Internal Area = 90.0 sq m / 969 sq ft
 Outhouse = 13.1 sq m / 141 sq ft
 Total = 103.1 sq m / 1110 sq ft

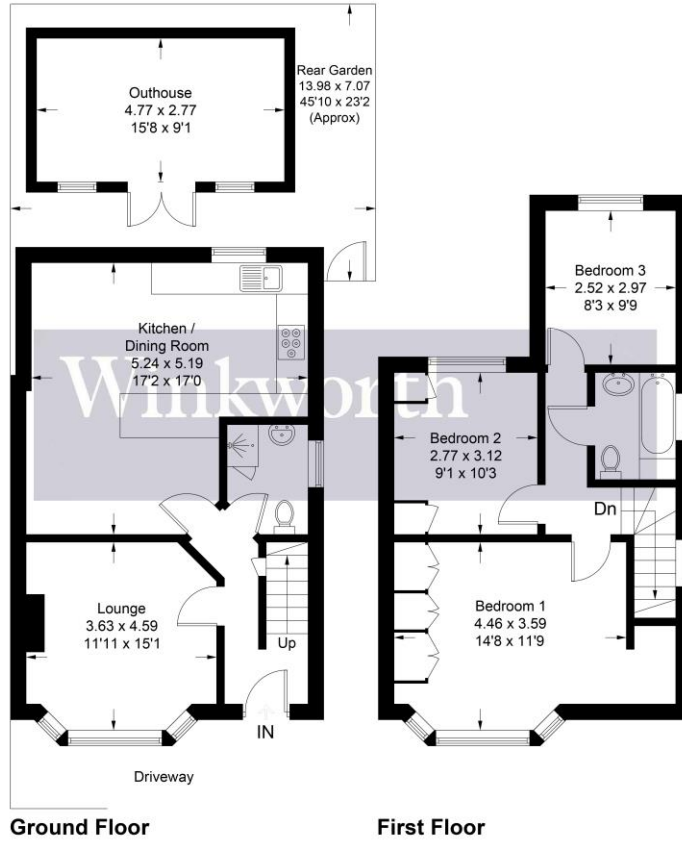
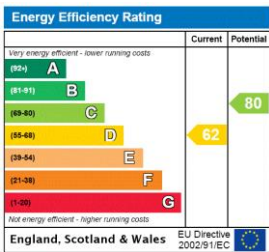


Illustration for identification purposes only, measurements are approximate, not to scale. Winkworth © 2024 (ID1069659)

This floorplan is for illustration purposes only and is not to scale. The position and size of doors, windows, appliances and other features are approximate.



Tenure: Freehold
Term: Expires -
Service Charge: £0 per annum
Ground Rent: £ 0 Annually (subject to increase)
Council Tax Band: D

Where no figures are shown, we have been unable to ascertain the information. All figures that are shown were correct at the time of printing.