



Horseshoe Crecent
Ferndown BH22 9FX
GUIDE PRICE £550,000

Winkworth



Guide Price £550,000
FREEHOLD

This stunning four/five bedroom two bathroom versatile and spacious detached house is located on the popular Holmwood Park development and further benefits from a professionally landscaped garden and driveway.

With direct access to picturesque woodland walks this property is ideal for a family who enjoy the outdoors!

Four/Five Bedrooms
En-suite Bedroom
Two Reception Rooms
Guest WC
Stunning Interior
Family/Fifth Bedroom With Patio Doors
Kitchen/Diner
Driveway
Landscaped Garden
Popular Development
Detached House

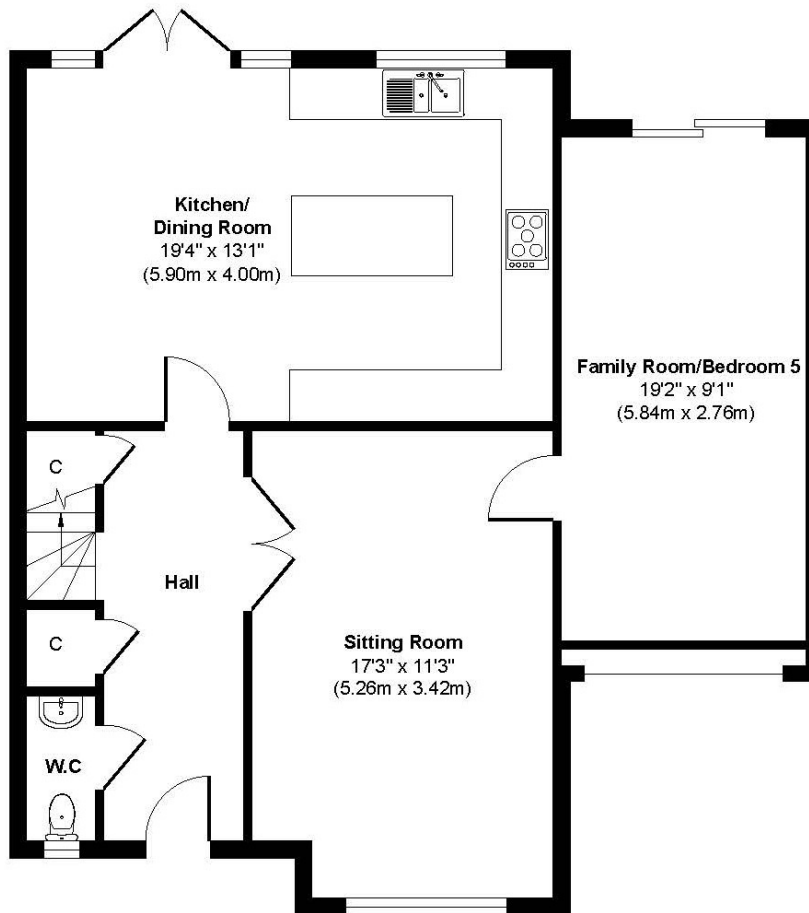
EPC B | Council Tax Band E

01202 434365
ferndown@winkworth.co.uk

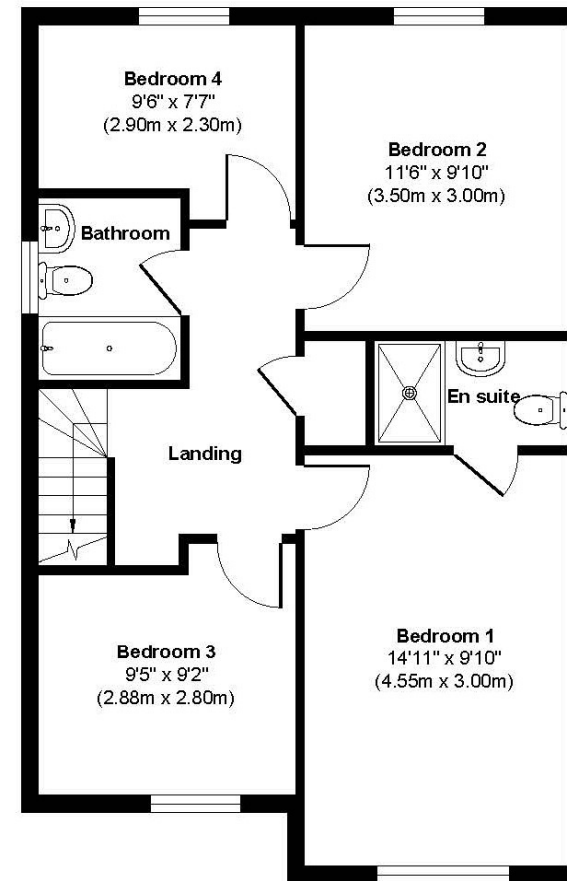




Horseshoe Crescent



Ground Floor
Approximate Floor Area
780 sq. ft
(72.46 sq. m)



First Floor
Approximate Floor Area
570 sq. ft
(52.95 sq. m)

Approx. Gross Internal Floor Area 1350 sq. ft / 125.41 sq. m.

Whilst every attempt has been made to ensure the accuracy of the floorplan shown, all measurements, positioning, fixtures, fittings and any other data shown are an approximate interpretation for illustrative purposes only and are not to scale.