



MORTIMER COURT, NW8 £295,000 SOLE AGENT Subject to contract

A lovely studio apartment situated on the fourth floor of this popular mansion-style block on Abbey Road. Mortimer Court, which benefits from a passenger lift, porter and communal gardens is only 75 metres away from the world famous Beatles Crossing. Mortimer Court is superbly located in the heart of St John's Wood, less than 500 metres from St John's Wood Underground Station (Jubilee Line) and the High Street and Lords Cricket Ground are within 0.6 miles.

Studio | Communal Gardens | Porterage | Passenger Lift | Entrance Phone | Leasehold

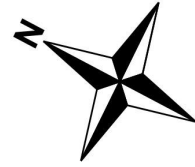
winkworth.co.uk/st-johns-wood



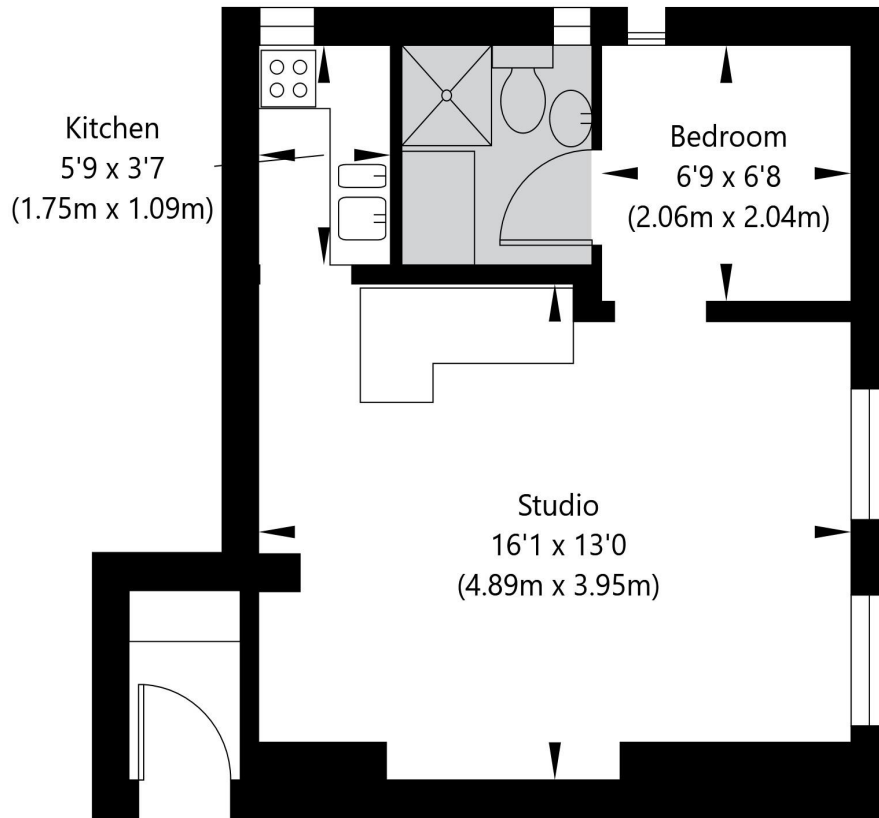
For every step...



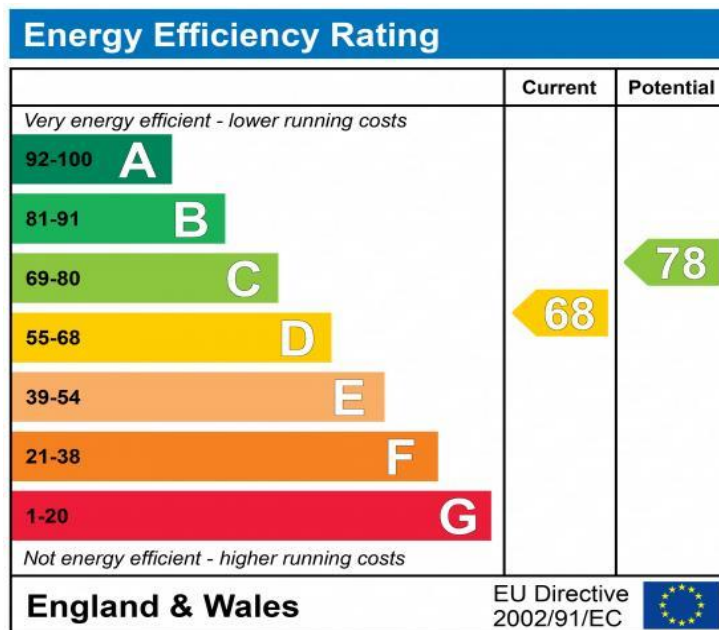
Abbey Road, London NW8 9AB



Fourth Floor
GROSS INTERNAL FLOOR AREA
APPROX. 30.22 SQ M / 325 SQ FT



APPROXIMATE GROSS INTERNAL FLOOR AREA 30.22 SQ M / 325 SQ FT
THIS FLOOR PLAN IS FOR ILLUSTRATIVE PURPOSES ONLY AND
SHOULD BE USED FOR THIS PURPOSE BY PROSPECTIVE APPLICANTS AS ITS NOT TO SCALE.



Tenure: Leasehold

Term: 99 years from 29/09/1976

Service Charge: £5,532.90 per annum

Current Ground Rent: £60.00 Annually
(Subject to increase)

NOTES: (The Service Charge includes Reserve Fund)

Where no figures are shown, we have been unable to ascertain the information. All figures that are shown were correct at the time of printing.

NB: These particulars are not an offer or contract, nor part of one. You should not rely on statements by Winkworth in the particulars or by word of mouth or in writing "information" as being factually accurate about the property, its condition or its value. Neither Winkworth nor any joint agent has any authority to make any representations about the property, and accordingly any information given is entirely without responsibility on the part of the agents, seller(s) or lessor(s). These particulars are prepared on the basis of the information supplied by our client and are a rough guide for information only. The photographs show only certain parts of the property. We are not able to check all of the information and therefore are unable to guarantee accuracy. All interested parties are therefore advised to undertake all necessary inspections and checks that they deem appropriate. Where displayed, the square footage is taken from the floor plans, which are created by an independent supplier. These measurements are approximate and included for illustrative purposes only. The measurements may vary. Winkworth does not make any representation as to the accuracy of these measurements and you should seek to verify them for yourself. Winkworth accept no liability for any loss you may suffer if you rely on these measurements. All fixtures and fittings, whether fitted or not are deemed removable by the vendor unless stated. Any reference to alterations to, or use of, any part of the property does not mean that any necessary planning, building regulations or other consent has been obtained. Amenities and appliances have not been tested.

St John's Wood | 103-104 St John's Wood Terrace, London NW8 6PL
020 7586 7001 | stjohnswood@winkworth.co.uk

Winkworth

winkworth.co.uk/st-johns-wood

See things differently.