

Earls Court Square, Earls Court, London, SW5

£750 per week* / £3,250 per month – Furnished or Part-Furnished

A stylish and contemporary two double bedroom, raised ground floor flat with views onto the attractive garden square.

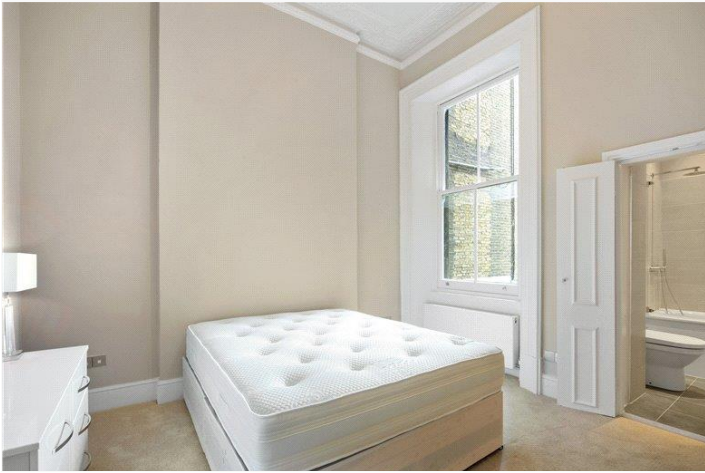
2 Bedrooms | 1 Reception Room | 2 Bathrooms | Ground Floor Flat | Communal Garden Access | 728 Approx sq ft | EPC: D

APPLICANT FEES MAY BE APPLICABLE
HLDING DEPOSIT OF 1 WEEK'S RENT
SECURITY DEPOSIT OF 5 WEEKS' RENT

Winkworth

winkworth.co.uk

for every step...



DESCRIPTION

A stylish and contemporary two double bedroom, raised ground floor flat with views onto the attractive garden square.

The property benefits from an open-plan kitchen/reception room with wooden floors and large bay window overlooking the communal gardens to which the flat has access (by separate arrangement). The two double bedrooms are located at the rear of the flat, both benefitting from excellent built-in storage, and are serviced by two bathrooms (one en-suite). The property is available immediately on a furnished or part-furnished basis.



ACCOMMODATION

2 Bedrooms, 1 Reception Room,
2 Bathrooms, Ground Floor Flat,
Communal Gardens Access,
Furnished or Part-Furnished,
728 Approx Sq ft

COUNCIL TAX BAND

Band G



Energy Efficiency Rating		
	Current	Potential
Very energy efficient - lower running costs		
(92+) A		
(81-91) B		
(69-80) C		76
(55-68) D	61	
(39-54) E		
(21-38) F		
(1-20) G		
Not energy efficient - higher running costs		
England, Scotland & Wales	EU Directive 2002/91/EC	

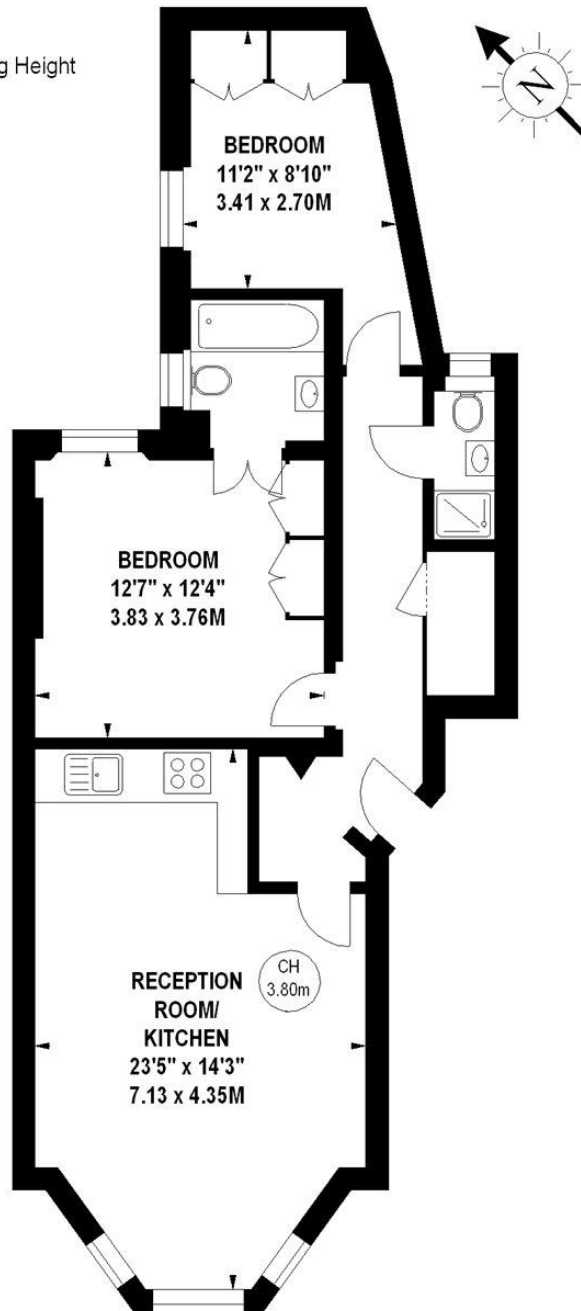


Earls Court Square, SW5

Approximate gross internal area

728 sq ft / 67.63 sq m

Key :
CH - Ceiling Height



Raised Ground Floor

Illustration For Identification Purposes Only. Not To Scale

*Floorplan Drawn According To RICS Guidelines

Copyright of FeaturePRO

This floorplan is for illustration purposes only and is not to scale. The position and size of doors, windows, appliances and other features are approximate.

**Please note, rent cannot be paid on a weekly basis*

Winkworth

South Kensington Lettings | 020 7370 6767 | lettings.southken@winkworth.co.uk

winkworth.co.uk

for every step...

Winkworth wishes to inform prospective buyers and tenants that these particulars are a guide and act as information only. All our details are given in good faith and believed to be correct at the time of printing but they don't form part of an offer or contract. No Winkworth employee has authority to make or give any representation or warranty in relation to this property. All fixtures and fittings, whether fitted or not are deemed removable by the vendor unless stated otherwise and room sizes are measured between internal wall surfaces, including furnishings.