



EYNHAM ROAD, W12
£3,200 PER MONTH

Winkworth



EYNHAM ROAD, W12

Stunning Modernised Ground Floor Apartment

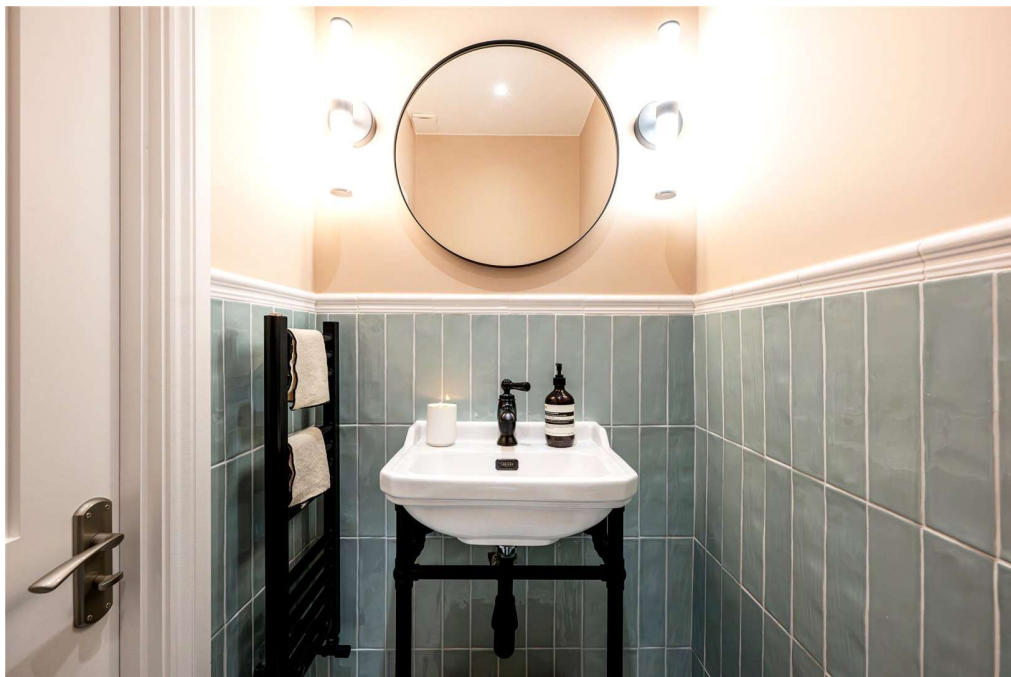
This beautifully presented ground-floor apartment offers gorgeous period features, high ceilings, and an abundance of natural light throughout.

Finished to an exceptional standard, the property comprises two spacious bedrooms, a chic bespoke bathroom, a bright and spacious reception room with direct access to a shared garden, and a fully fitted high-spec kitchen.

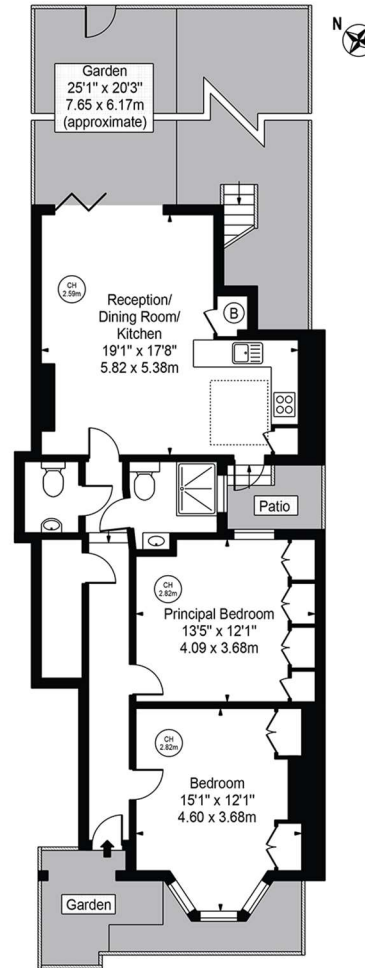
LOCATION

Ideally located with excellent transport links, local tube stations are less than a 10-minute walk away. Westfield Shopping Centre is also just a short stroll away, offering a wide selection of shops, restaurants, and bars.





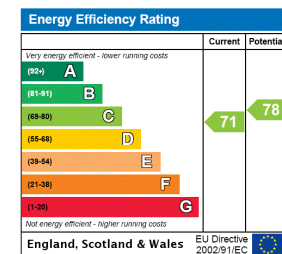
Eynham Road
Approx. Gross Internal Area 816 Sq Ft - 75.81 Sq M



Ground Floor

For Illustration Purposes Only - Not To Scale

This floor plan should be used as a general outline for guidance only and does not constitute in whole or in part an offer or contract. Any intending purchaser or lessee should satisfy themselves by inspection, searches, enquiries and full survey as to the correctness of each statement. Any areas, measurements or distances quoted are approximate and should not be used to value a property or be the basis of any sale or let. Copyright Morriarti Photography & Design LTD



North Kensington | 020 7792 5000 | northkensington@winkworth.co.uk

winkworth.co.uk

Winkworth wishes to inform prospective buyers and tenants that these particulars are a guide and act as information only. All our details are given in good faith and believed to be correct at the time of printing but they don't form part of an offer or contract. No Winkworth employee has authority to make or give any representation or warranty in relation to this property. All fixtures and fittings, whether fitted or not are deemed removable by the vendor unless stated otherwise and room sizes are measured between internal wall surfaces, including furnishings.

