



## DENBIGH STREET, UK, SW1V

£525,000

SHARE OF FREEHOLD

### At a glance...

- One Bedroom Flat
- Great Ceiling Height
- Share of Freehold
- Central Pimlico
- Excellent Storage
- Close to Transport & Amenities

**Winkworth**

for every step...



Energy Efficiency Rating		
	Current	Potential
Very energy efficient - lower running costs		
(92+) <b>A</b>		
(81-91) <b>B</b>		
(69-80) <b>C</b>		73
(55-68) <b>D</b>	59	
(39-54) <b>E</b>		
(21-38) <b>F</b>		
(1-20) <b>G</b>		
Not energy efficient - higher running costs		
England, Scotland & Wales	EU Directive 2002/91/EC	

## DENBIGH STREET, UK, SW1V

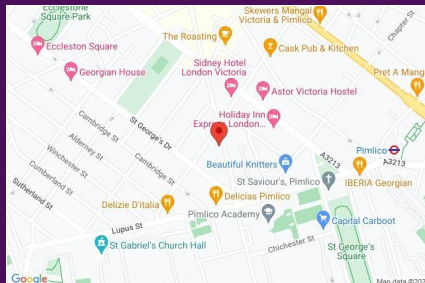
£525,000

SHARE OF FREEHOLD

Introducing a charming ground floor apartment with one bedroom and one reception room, presenting a wonderful opportunity for individuals seeking a comfortable and convenient living space.

Upon entering this delightful double-fronted property, you are greeted with an abundance of natural light that illuminates the entire space, creating a warm and inviting atmosphere throughout. The open plan layout of the reception room effortlessly flows into the well-appointed kitchen, allowing for seamless entertaining and comfortable everyday living.

The bedroom offers a peaceful retreat and boasts ample storage space to accommodate all your belongings. The bathroom, complete with modern fixtures and fittings, is conveniently situated adjacent to the bedroom for added convenience.

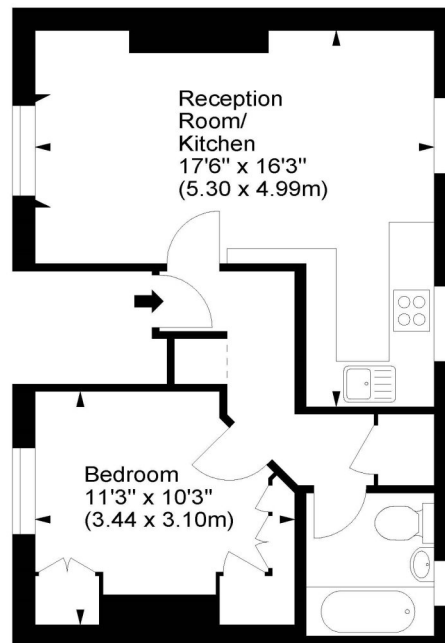


winkworth wishes to inform prospective buyers and tenants that these particulars are a guide and act as information only. All our details are given in good faith and believed to be correct at the time of printing but they don't form part of an offer or contract. No winkworth employee has authority to make or give any representation or warranty in relation to this property. All fixtures and fittings, whether fitted or not are deemed removable by the vendor unless stated otherwise and room sizes are measured between internal wall surfaces, including fireplaces.

### Denbigh Street, SW1V



Approx. Gross Internal Area  
421 Sq Ft - 39.11 Sq M



Ground Floor

For illustration purposes only. Not to scale.  
All measurements are taken and shown at floor level.  
[www.r3photography.co.uk](http://www.r3photography.co.uk) © Photography / Floor Plans / Lease Plans / EPCs



Pimlico & Westminster

020 7828 1786

[pimlico@winkworth.co.uk](mailto:pimlico@winkworth.co.uk)

[winkworth.co.uk/pimlico-westminster](http://winkworth.co.uk/pimlico-westminster)

**Winkworth**

for every step...