



Keith Grove, London, W12

£750,000 Leasehold

A beautifully presented three-bedroom split level flat with a private roof terrace offering nearly 1000 sqft of space. Sold with no onward chain.

Reception Room | Kitchen | 3 Bedrooms | En Suite Shower Room | Bathroom | Roof Terrace | 984 Sq Ft / 91 Sq M | Council Tax Band D | EPC rating Band C

Winkworth

winkworth.co.uk

for every step...



LOCATION

Keith Grove is a desirable tree lined quiet residential cul-de-sac which runs to the south of Uxbridge Road, ideal for the numerous amenities on offer in Shepherds Bush. The nearest Underground stations are Goldhawk Road, Shepherds Bush Market and Shepherds Bush, where both Central Line and London Overground services are on offer. The various amenities of Westfield London are also close to hand. Numerous well regarded schools are nearby, including St Stephen's CE Primary School.

DESCRIPTION

Presented in very good condition is this three-bedroom, two-bathroom split level flat on a quiet cul-de-sac.

On the first floor, the property comprises spacious reception room with direct access to a private roof terrace, separate kitchen, family bathroom and two bedrooms which benefit from built in storage.

The top floor has been converted in a spacious main bedroom with ensuite bathroom and ample built-in and eave storage.

Lease: 125 years from 13/11/2012

Service Charge: £725.28 pa

Ground Rent: £250 pa





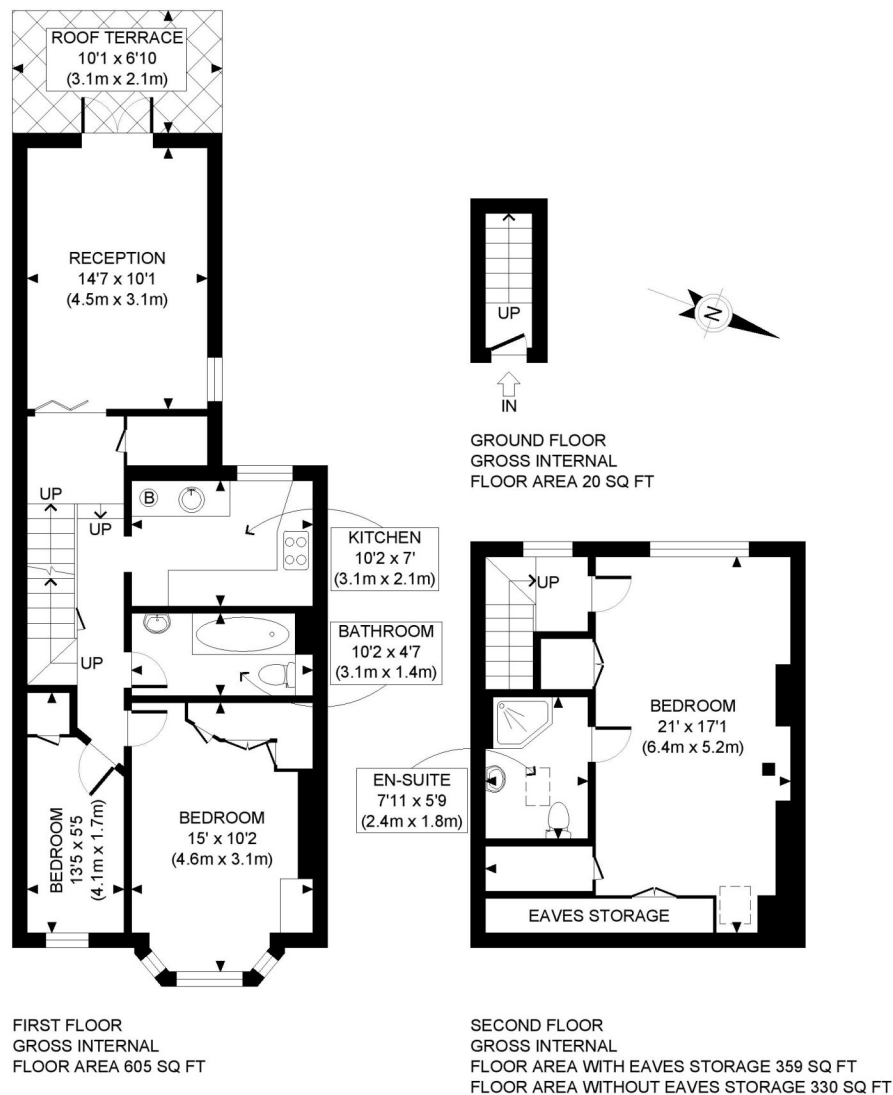
LOCAL AUTHORITY
Hammersmith & Fulham

TENURE
Leasehold 111 years 10 months.

PRICE: £750,000 Leasehold



Score	Energy rating	Current	Potential
92+	A		
81-91	B		
69-80	C	71 C	79 C
55-68	D		
39-54	E		
21-38	F		
1-20	G		



APPROX. GROSS INTERNAL FLOOR AREA WITH EAVES STORAGE: 984 SQ FT/ 91 SQM
APPROX. GROSS INTERNAL FLOOR AREA WITHOUT EAVES STORAGE: 955 SQ FT/ 89 SQM

Winkworth

KEITH GROVE, W12

This plan is for illustrative purposes only and should be used as such by any prospective client. Whilst every attempt has been made to ensure the accuracy of the Floor Plan contained here, measurements of the doors, windows, rooms and any other items are approximate and no responsibility is taken for any errors, omissions, or misstatement. The services, systems and appliances shown have not been tested and no guarantee as to the operability or efficiency can be given.

PROPERTY PHOTO PLANS .CO.UK
ONE STOP SHOP FOR PROPERTY MARKETING

The displayed square footage is taken from the floor plans with measurements created using the Royal Institute of Chartered Surveyors' Code of Practice for Measuring. These measurements are approximate and included for illustrative purposes only. Winkworth does not make any representation as to the accuracy of these measurements and you should seek to verify them for yourself. Winkworth accept no liability for any loss you may suffer if you rely on these measurements.

Shepherds Bush | 020 8735 3266 | shepherdsbush@winkworth.co.uk

Winkworth

for every step...

Under the Property Misdescriptions Act 1991, these Particulars are a guide and act as information only. All details are given in good faith and are believed to be correct at time of printing. Winkworth give no representation as to their accuracy and potential purchasers or tenants must satisfy themselves by inspection or otherwise as to their correctness. No employee of Winkworth has authority to make or give any representation or warranty in relation to this property.