



CRANBURY ROAD, BERKSHIRE, RG30 2XE
£825 PER MONTH FURNISHED

ONE BEDROOM FIRST FLOOR MAISONETTE IN A VICTORIAN CONVERSION IN WEST READING

Reading | 0118 4022 300 | reading@winkworth.co.uk

Winkworth

for every step...

winkworth.co.uk



DESCRIPTION:

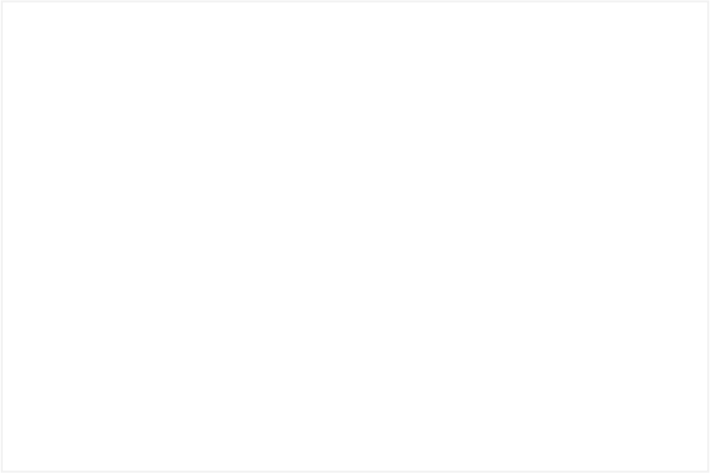
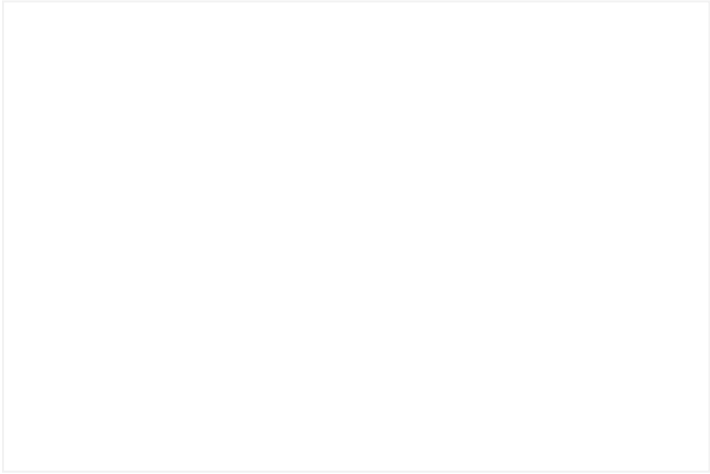
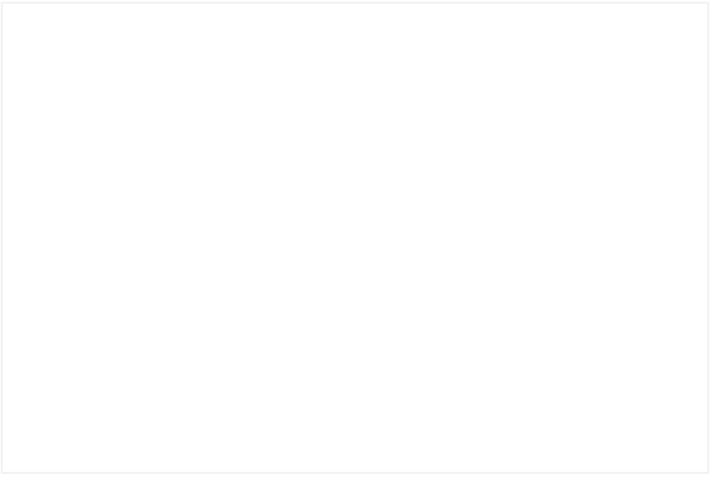
Located just over a mile from Reading Town Centre is this one bedroom first floor maisonette in a Victorian conversion. Accommodation comprises; a private hallway; lounge/diner, double bedroom, fitted kitchen and bathroom. Available 20th June 2025. Furnished.

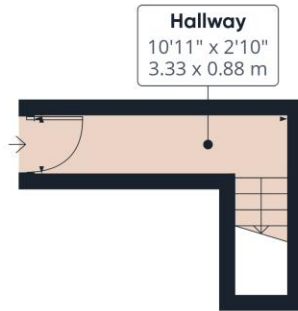
*Permit on road parking is subject to availability through Reading Borough Council

AT A GLANCE

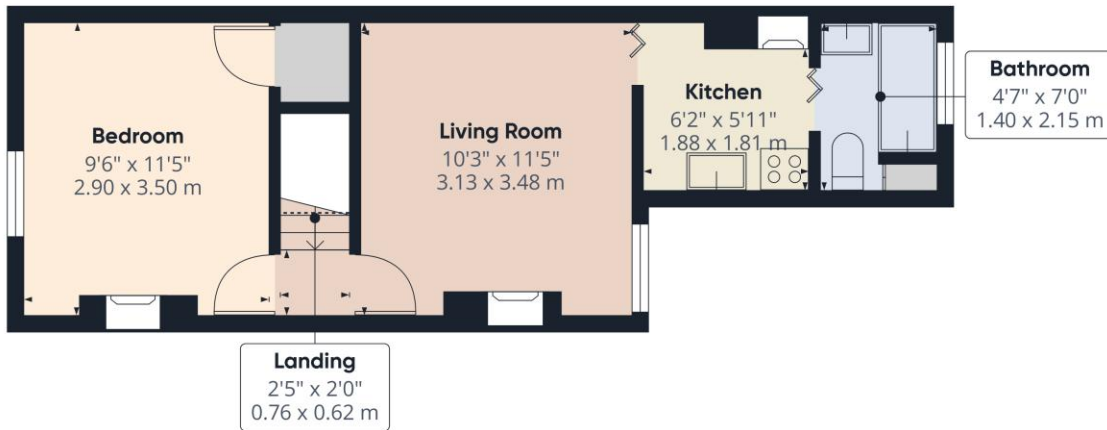
- One Bedroom First Floor Flat
- Lounge/Diner
- Council tax band A
- On road permit parking (through Reading Borough Council)
- Available 20th June
- Furnished







Ground Floor



Floor 1

Approximate total area⁽¹⁾
350 ft²
32.5 m²

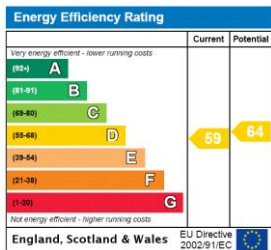
(1) Excluding balconies and terraces

Reduced headroom
..... Below 5 ft/1.5 m

Calculations reference the RICS IPMS 3C standard. Measurements are approximate and not to scale. This floor plan is intended for illustration only.

GIRAFFE 360

This floorplan is for illustration purposes only and is not to scale. The position and size of doors, windows, appliances and other features are approximate.



Deposit: £951.92

Holding Deposit: £190.38

Council Tax Band: A

Where no figures are shown, we have been unable to ascertain the information. All figures that are shown were correct at the time of printing.

Winkworth

Reading | 0118 4022 300 | reading@winkworth.co.uk

for every step...

winkworth.co.uk

Winkworth wishes to inform prospective buyers and tenants that these particulars are a guide and act as information only. All our details are given in good faith and believed to be correct at the time of printing but they don't form part of an offer or contract. No Winkworth employee has authority to make or give any representation or warranty in relation to this property. All fixtures and fittings, whether fitted or not are deemed removable by the vendor unless stated otherwise and room sizes are measured between internal wall surfaces, including furnishings.