



HERNE HILL ROAD, SE24
£580,000 LEASEHOLD

Winkworth



HERNE HILL ROAD, SE24

We are pleased to bring to the market this two-bedroom Edwardian Terraced maisonette with a garden. Ideally located for the amenities of Herne Hill, Loughborough Junction, Dulwich Village, Denmark Hill, Brixton and the lovely Ruskin Park.

Available exclusively through Winkworth we are delighted to present this spacious split-level ground floor maisonette. The ground floor has its own private entrance (with fitted storage under the stairs) leading to a front reception room with a square bay window, wood floors and an original fireplace. Down some steps is the spacious kitchen/diner which is fitted with plenty of wall and base units and is equipped with the usual modern appliances. There is direct access to the south-west facing patio garden via the side return, perfect for summer entertaining. There is a handy utility room just off the kitchen which has plumbing for a washing machine/dryer. There are two double bedrooms (one being a small double), with the larger bedroom (on the upper level) benefiting from wooden floors and they both overlook the garden. The modern bathroom has a bath with a shower overhead, a wash hand basin and a WC.

Offered with a long lease in excess of 950 years, early viewings are recommended!

AT A GLANCE

- Edwardian Era
- Terraced Maisonette
- Reception Rooms
- Two Bedrooms
- Modern Bathroom
- Kitchen/Diner
- Utility Room
- South-West Facing Garden
- Direct Access to Ruskin Park
- Long Lease (951 years left)
- Council Tax Band: C (Lambeth)
- Sole Agent

DIRECTIONS

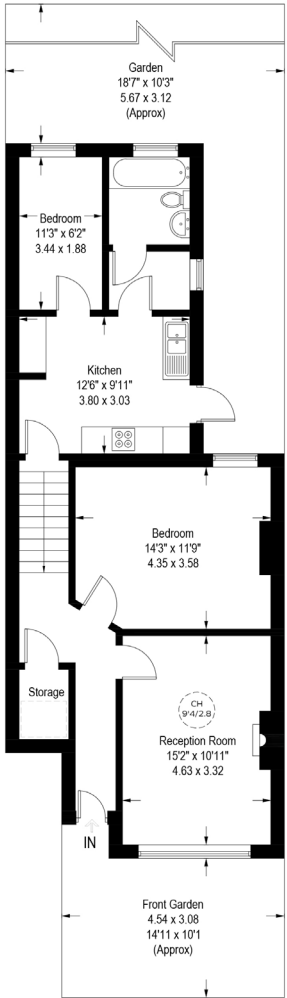
Herne Hill





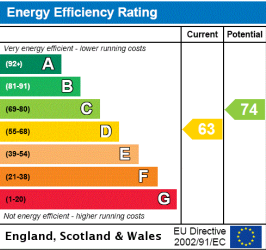
Herne Hill Road, London, SE24

Approximate Gross Internal Area = 751 sq ft / 69.8 sq m



Ground Floor

Illustration for identification purposes only,
measurements are approximate, not to scale. (ID943403)



Herne Hill | 0207 501 8950 | hernehill@winkworth.co.uk

winkworth.co.uk

Winkworth wishes to inform prospective buyers and tenants that these particulars are a guide and act as information only. All our details are given in good faith and believed to be correct at the time of printing but they don't form part of an offer or contract. No Winkworth employee has authority to make or give any representation or warranty in relation to this property. All fixtures and fittings, whether fitted or not are deemed removable by the vendor unless stated otherwise and room sizes are measured between internal wall surfaces, including furnishings.

