



Kingsmill Terrace, London, NW8

OIEO £600,000 *Leasehold*



A delightful one-bedroom apartment with fantastic natural light throughout, located on the third-floor of this popular portered building (with lift). Kingsmill Terrace is ideally situated within 30 metres of the newly landscaped St John's Wood High Street, with its rich selection of cafes, restaurants and boutique shopping facilities, not to mention St John's Wood Underground Station (Jubilee line) just under 150 metres away. Both Regent's Park and Primrose Hill are less than one mile away.



Winkworth St John's Wood

020 7586 7001 | stjohnswood@winkworth.co.uk



KEY FEATURES

- Double Bedroom
- Bathroom
- Separate WC
- Reception Room
- Kitchen
- Communal Heating
- Communal Hot Water
- Passenger Lift
- Entrance Phone
- Leasehold



MATERIAL INFO

Tenure: Leasehold

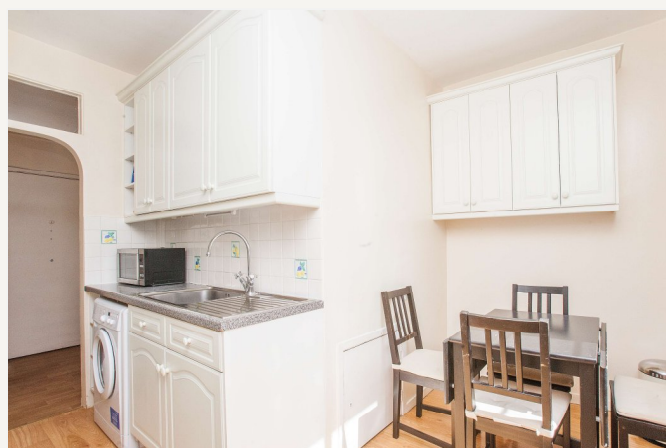
Lease Expiry Date: 01/01/3006

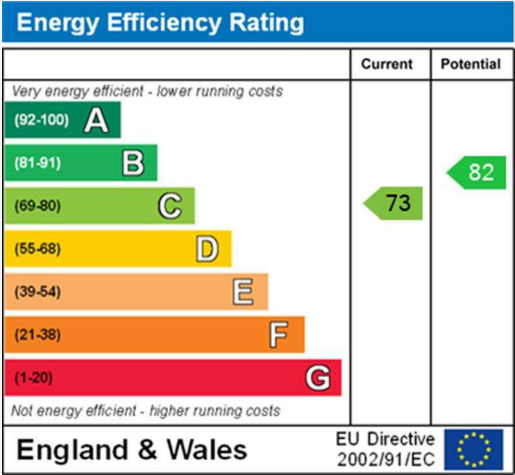
Service Charge: £4,650.54 per annum

Ground Rent: £0 Annually (subject to increase)

Council Tax Band: E

EPC rating: C





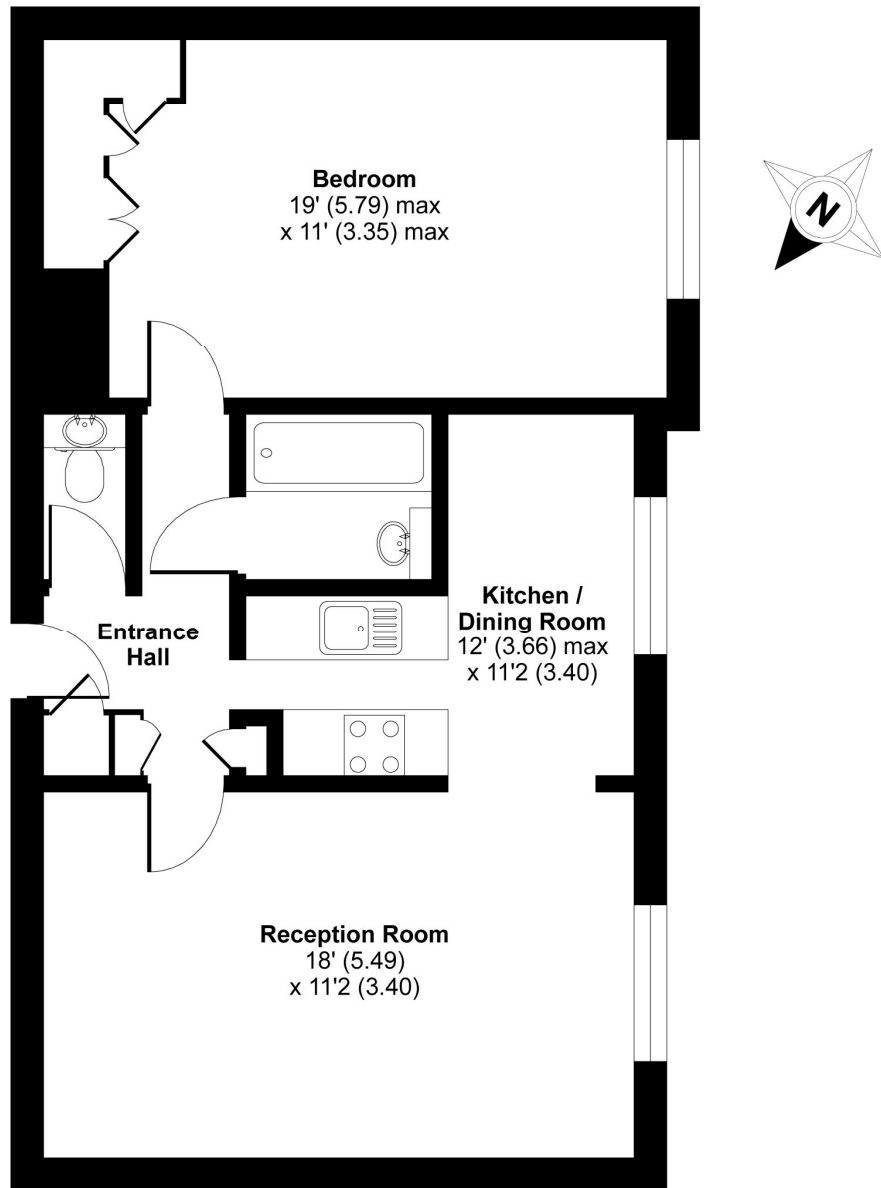
For more information, scan the QR code or visit the link below



<https://www.winkworth.co.uk/sale/property/SJD150624>

Kingsmill Terrace, London, NW8

APPROX. GROSS INTERNAL FLOOR AREA 626 SQ FT 58.1 SQ METRES



THIRD FLOOR

Whilst every attempt has been made to ensure the accuracy of the floor plan contained here, measurements of doors, windows and rooms are approximate and no responsibility is taken for any error, omission or misstatement. These plans are for representation purposes only as defined by RICS Code of Measuring Practice and should be used as such by any prospective purchaser. Specifically no guarantee is given on the total square footage of the property if quoted on this plan. Any figure given is for initial guidance only and should not be relied on as a basis of valuation.

Where no figures are shown, we have been unable to ascertain the information. All figures that are shown were correct at the time of printing.

Winkworth St John's Wood

020 7586 7001 | stjohnswood@winkworth.co.uk

Winkworth wishes to inform prospective buyers and tenants that these particulars are a guide and act as information only. All our details are given in good faith and believed to be correct at the time of printing but they don't form part of an offer or contract. No Winkworth employee has authority to make or give any representation or warranty in relation to this property. All fixtures and fittings, whether fitted or not are deemed removable by the vendor unless stated otherwise and room sizes are measured between internal wall surfaces, including furnishings.