



DACRE GARDENS, HERTFORDSHIRE, WD6
£550,000 FREEHOLD

A WELL PRESENTED END OF TERRACE HOUSE WITH OFF STREET PARKING

Borehamwood | 020 8953 8899 | borehamwood@winkworth.co.uk



DESCRIPTION:

A well-presented end of terrace family home, situated on a corner plot. The house has been reconfigured to provide spacious living and dining accommodation on the ground floor, leading to a modern fitted kitchen, plus the added benefit of a guest WC. On the first floor there are three bedrooms and a family bathroom. The rear garden offers a patio area leading onto the lawn and there is off street parking to the side for two cars.

Dacre Gardens is located on the popular south side of Borehamwood within the Yavneh catchment area and the eruv. The house is also within a mile of Borehamwood town centre which has a wide range of shops, restaurants, and amenities. Transport is in the form of local buses to Edgware, St Albans and Watford and there is train access into Central London via Elstree & Borehamwood station.

AT A GLANCE

- 3 Bedrooms
- Entrance Porch
- Kitchen
- Open Plan Lounge/Diner
- Guest Wc
- Bathroom
- Front Garden
- Rear Garden
- Off Street Parking





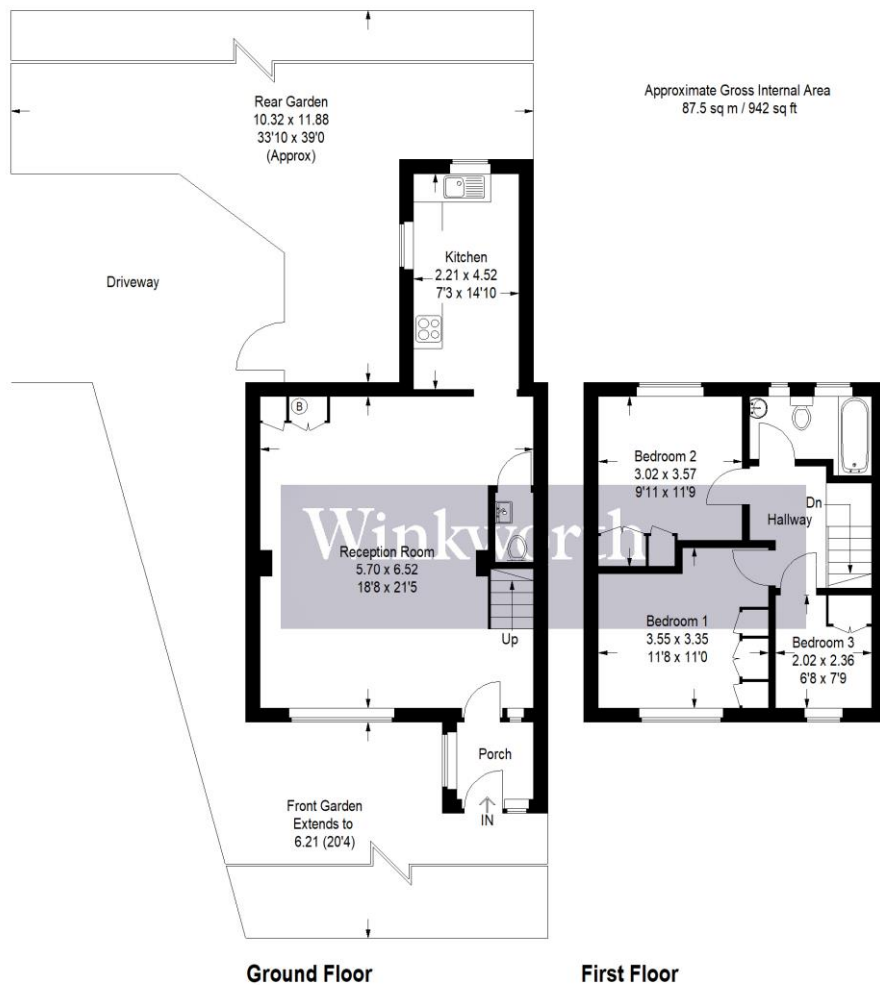


Illustration for identification purposes only, measurements are approximate, not to scale. Winkworth © 2022 (ID834870)

This floorplan is for illustration purposes only and is not to scale. The position and size of doors, windows, appliances and other features are approximate.

