



## Jasper Road, SE19

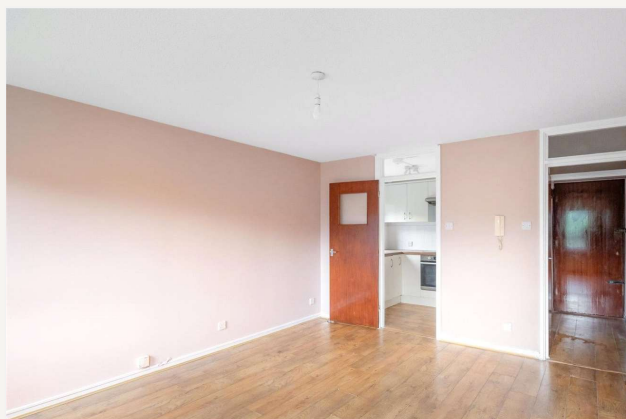
£325,000 *Leasehold*



A well-presented two bedroom apartment comprising; two bedrooms, reception room, bathroom and kitchen. The property, which is ideal for first time buyers, is offered to the market chain free.

### KEY FEATURES

- Prime location - close to local amenities and excellent transport links
- Two bedrooms
- Abundance of light throughout
- Spacious
- Purpose Built
- Allocated covered parking space



**Crystal Palace**

02038693222 | [crystalpalace@winkworth.co.uk](mailto:crystalpalace@winkworth.co.uk)

**Winkworth**

for every step...

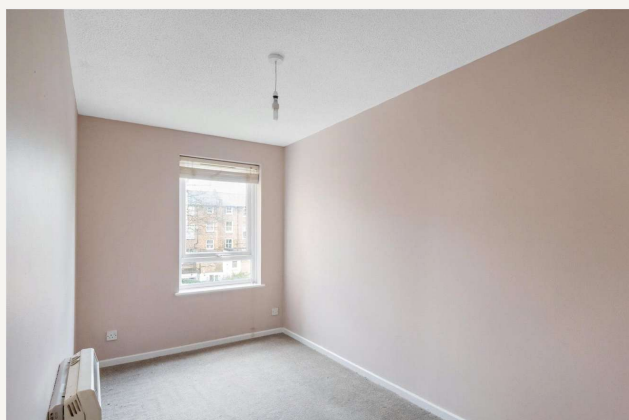
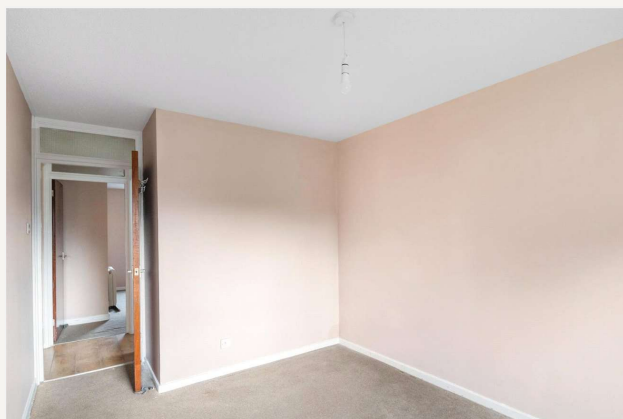




The flat is amazingly located, close to an array of eclectic boutique shops, bars and restaurants and a cinema. You are also only a short walk from Crystal Palace and Gipsy Hill Train Stations, they offer links into Clapham Junction, London Victoria and London Bridge at regular intervals.

Lease is currently in the process of being extended to 149 years.





## MATERIAL INFO

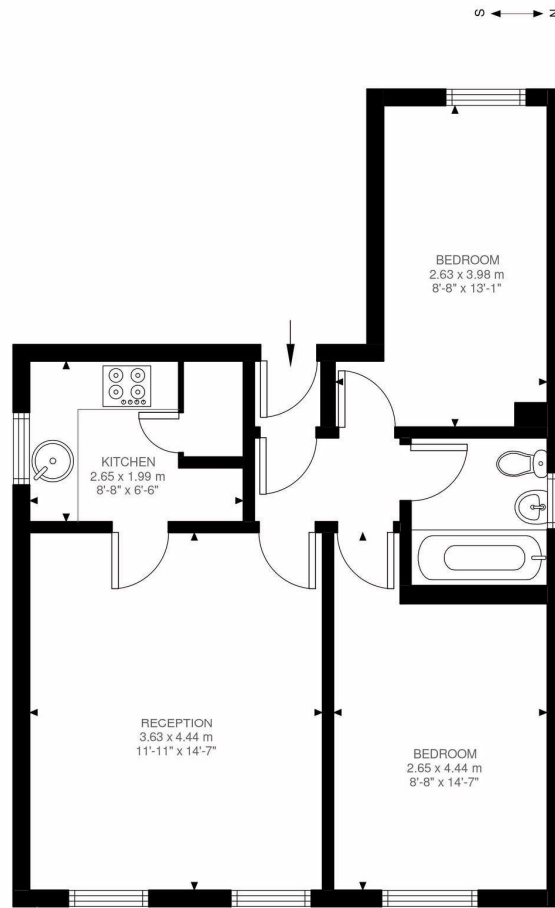
**Tenure:** Leasehold

**Term:** 148 year and 7 months

**Service Charge:** £2243 per annum

**Ground Rent:** £ 100 Annually (subject to increase)

**EPC rating:** C



Raised Ground Floor  
528 ft²

Jasper Road, SE19  
Approximate Gross Internal Area  
49.04 SQ.M / 528 SQ.FT

Illustration for identification purposes only. Not to scale.  
Floor Plan Drawn According To RICS Guidelines.

Score	Energy rating	Current	Potential
92+	A		
81-91	B		
69-80	C	78 C	82 B
55-68	D		
39-54	E		
21-38	F		
1-20	G		

For more information, scan the QR code or visit the link below

**Crystal Palace**

02038693222 | crystalpalace@winkworth.co.uk

**Winkworth**

for every step...

Winkworth wishes to inform prospective buyers and tenants that these particulars are a guide and act as information only. All our details are given in good faith and believed to be correct at the time of printing but they don't form part of an offer or contract. No Winkworth employee has authority to make or give any representation or warranty in relation to this property. All fixtures and fittings, whether fitted or not are deemed removable by the vendor unless stated otherwise and room sizes are measured between internal wall surfaces, including furnishings.