



Scrubs Lane, NW10

£1,750 per month *Unfurnished*



Newly Decorated Ground Floor Apartment With 36+ft Private Garden

#### KEY FEATURES

- Newly Decorated
- Ground Floor
- Open Plan Kitchen Reception
- Fully Tiled Bathroom
- Spacious Garden
- Large Private Garden



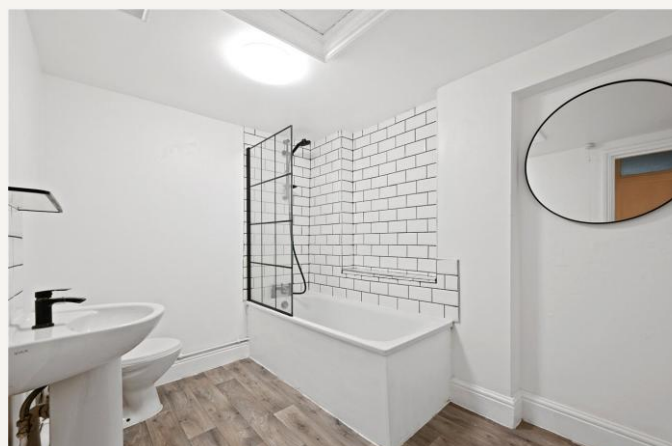
Kensal Rise & Queens Park

0208 960 4947 | [kensalrise@winkworth.co.uk](mailto:kensalrise@winkworth.co.uk)

**Winkworth**

for every step...







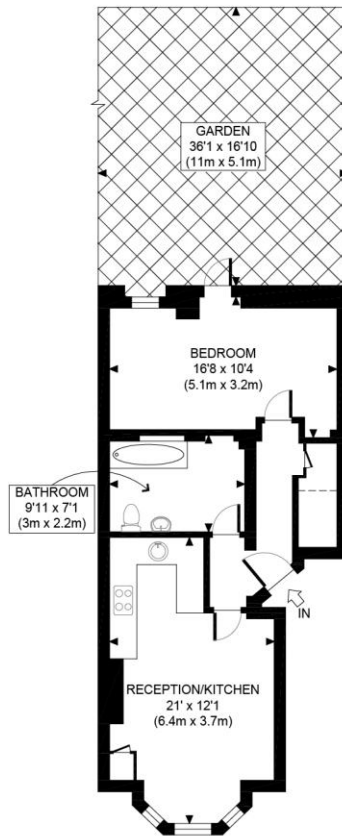


#### MATERIAL INFO

**Deposit:** 5 weeks rent

**Holding Deposit:** 1 weeks rent

**Council Tax Band:** D



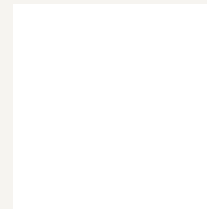
GROUND FLOOR  
GROSS INTERNAL  
FLOOR AREA 526 SQ FT



<b>APPROX. GROSS INTERNAL FLOOR AREA 526 SQ FT / 49 SQM</b> <small>Disclaimer: Floor plan measurements are approximate and are for illustrative purposes only. While we do not doubt the floor plan accuracy and completeness, you or your advisors should conduct a careful, independent investigation of the property in respect of monetary valuation</small>		<b>Scrubs Lane</b> <small>date 10/12/25</small> <b>photoplan</b>
---	--	--

Score	Energy rating	Current	Potential
92+	<b>A</b>		
81-91	<b>B</b>		
69-80	<b>C</b>	72 C	80 C
55-68	<b>D</b>		
39-54	<b>E</b>		
21-38	<b>F</b>		
1-20	<b>G</b>		

For more information, scan the QR code or visit the link below



<https://www.winkworth.co.uk/rent/property/KQP250120>

Where no figures are shown, we have been unable to ascertain the information. All figures that are shown were correct at the time of printing.

**Kensal Rise & Queens Park**

0208 960 4947 | [kensalrise@winkworth.co.uk](mailto:kensalrise@winkworth.co.uk)

**Winkworth**

for every step...

Winkworth wishes to inform prospective buyers and tenants that these particulars are a guide and act as information only. All our details are given in good faith and believed to be correct at the time of printing but they don't form part of an offer or contract. No Winkworth employee has authority to make or give any representation or warranty in relation to this property. All fixtures and fittings, whether fitted or not are deemed removable by the vendor unless stated otherwise and room sizes are measured between internal wall surfaces, including furnishings.