



HASTINGS STREET, WC1H  
£475,000 LEASEHOLD

Winkworth





## HASTINGS STREET, WC1H

A very attractive 1-bedroom ( 4th floor ) flat in a popular Red Brick mansion block in North Bloomsbury on Hastings street.

The flat has good width and has been looked after and kept very well.

The flat has excellent light throughout. There is an onsite Caretaker.

Queen Alexander Mansions is very central to Kings Cross Euston and the Brunswick Centre. The area has quite a few public parks and close to the Universities of LSE, UCL and Kings.

Leasehold: approx. 959 years remaining plus share of freehold.

Service charges: approx. £2,900.14 per annum

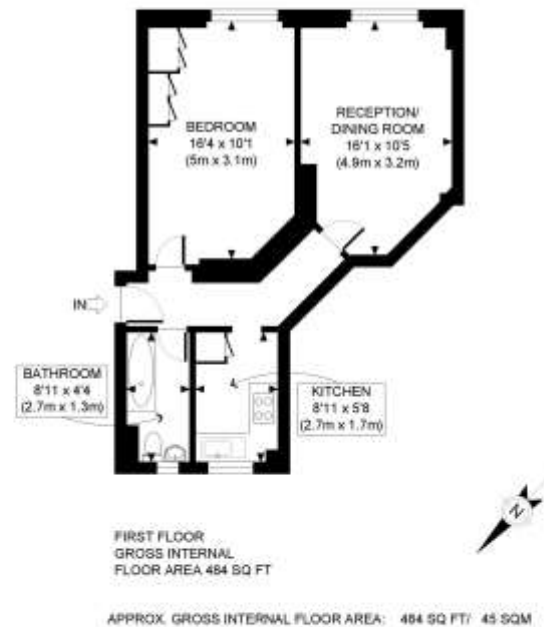
Ground Rent: NIL

Council Tax: Band D, £2,011 per annum.





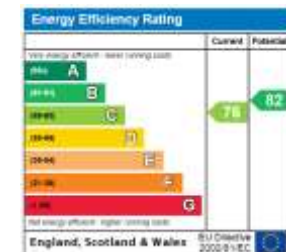




Winkworth

This plan is for illustrative purposes only and should be used as such by any prospective client.  
 Whilst every attempt has been made to ensure the accuracy of the Floor Plan contained here, measurements of the doors, windows,  
 rooms and any other items are approximate and no responsibility is taken for any errors, omissions, or misstatement.  
 The services, systems and appliances shown have not been tested and no guarantee as to the operability or efficiency can be given.

PROPERTY PHOTO PLANS  
AN ISO 9001 CERTIFIED BUSINESS



West End | 020 7240 3322 | westend@winkworth.co.uk

winkworth.co.uk

Winkworth wishes to inform prospective buyers and tenants that these particulars are a guide and act as information only. All our details are given in good faith and believed to be correct at the  
**time of printing but they don't** form part of an offer or contract. No Winkworth employee has authority to make or give any representation or warranty in relation to this property. All fixtures and  
 fittings, whether fitted or not are deemed removable by the vendor unless stated otherwise and room sizes are measured between internal wall surfaces, including furnishings.

Winkworth