



BELGRAVE ROAD, UK, SW1V

£1,250,000

SHARE OF FREEHOLD

At a glance...

- Two Good Bedrooms
- Two Bathrooms (both en-suite)
- Large Reception Room
- Stunning Roof Terrace
- Light and Bright Throughout

Winkworth

for every step...



Energy Efficiency Rating		
	Current	Potential
Very energy efficient - lower running costs		
(92+) A		
(81-91) B		
(69-80) C		
(55-68) D		
(39-54) E		
(21-38) F		
(1-20) G		
Not energy efficient - higher running costs		
England, Scotland & Wales	EU Directive 2002/91/EC	

BELGRAVE ROAD, UK, SW1V

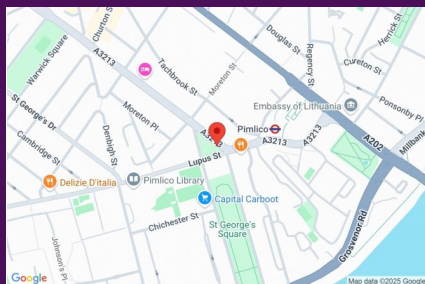
£1,250,000

SHARE OF FREEHOLD

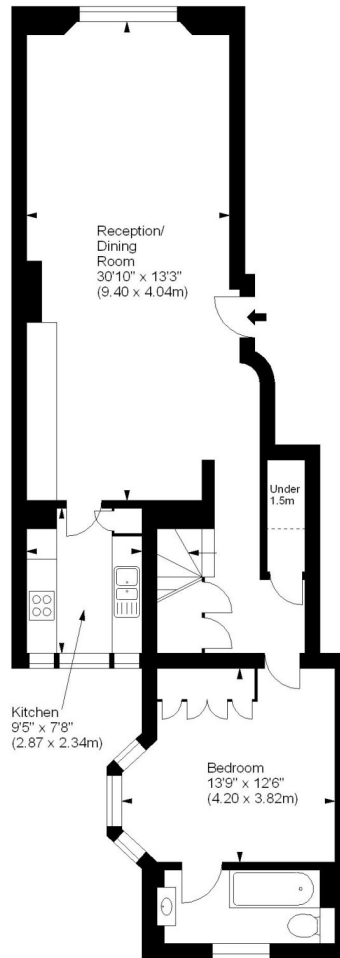
Well appointed throughout, accommodation is arranged over the ground and first floor of this impressive period property. There is a magnificent 30' reception/ dining room which provides a wonderful environment to entertain and dine off which is a separate, modern fitted kitchen. The generous master bedroom benefits from an abundance of built in storage with en-suite bathroom and theres a further double bedroom on the first floor with its own private bathroom. In addition there is a superb private roof terrace which is perfect for alfresco dining.

Belgrave Road is situated in a central Pimlico location with easy access to the bars, shops and restaurants of Churton Street, the Moreton Triangle, Warwick Way and Wilton Road.

Nearest transport is provided by Pimlico Underground Station offering services on the Victoria Line and Victoria mainline station offering overland connections throughout Kent & Sussex and Victoria Underground stations offering services on the Circle & District and Victoria lines.

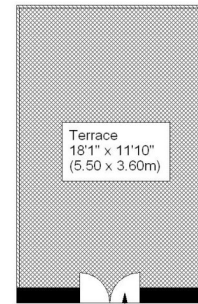


winkworth wishes to inform prospective buyers and tenants that these particulars are a guide and act as information only. All our details are given in good faith and believed to be correct at the time of printing but they don't form part of an offer or contract. No winkworth employee has authority to make or give any representation or warranty in relation to this property. All fixtures and fittings, whether fitted or not are deemed removable by the vendor unless stated otherwise and room sizes are measured between internal wall surfaces - including fire-chimneys.

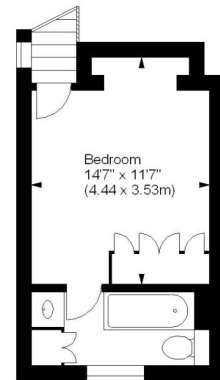


Ground Floor

Belgrave Road, SW1
Approx. Gross Internal Area
1101 Sq Ft - 102.28 Sq M



First Floor



First Floor

For illustration purposes only. Not to scale.
All measurements are taken and shown at floor level.
www.r3photography.co.uk © Photography / Floor Plans / Lease Plans / EPCs

Pimlico & Westminster

020 7828 1786

pimlico@winkworth.co.uk

winkworth.co.uk/pimlico-westminster

Winkworth

for every step...