



Malden Road, Hertfordshire, WD6

£450,000 *Freehold*

4  2  2 

## Chain Free Four Bedroom, Two Reception Victorian Cottage

### KEY FEATURES

- 4 Bedrooms
- 1062 sq ft
- Reception Room
- Kitchen
- Ensuite Bathroom
- Bathroom



**Borehamwood**

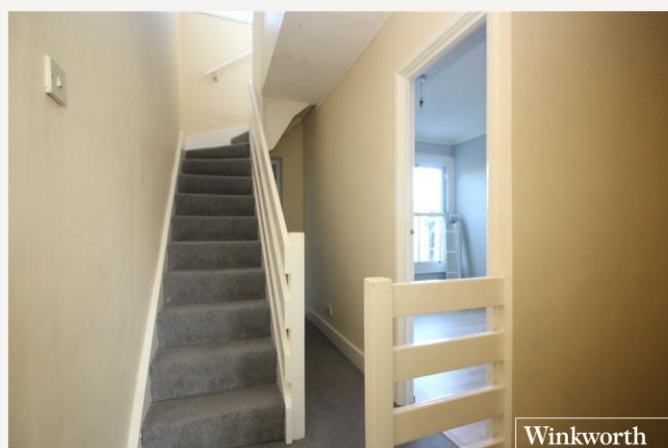
020 8953 8899 | [borehamwood@winkworth.co.uk](mailto:borehamwood@winkworth.co.uk)





Ideally located in a quiet and sought after turning within easy walking distance of Borehamwood town centre and Thameslink station is this Four bedroom Victorian Character house.

Offered for sale on a chain free basis the property is in need of some modernisation. Offering over 1,000 sq. ft of accommodation consisting of Living room, dining room, kitchen and bathroom to the ground floor with access via the kitchen to a private garden. You will find 3 bedrooms to the first floor with a further bedroom and ensuite to the second floor.







#### MATERIAL INFO

**Tenure:** Freehold  
**Term:** 0 year and 0 months  
**Service Charge:** £0 per annum  
**Ground Rent:** £ 0 Annually (subject to increase)  
**Council Tax Band:** D  
**EPC rating:** D

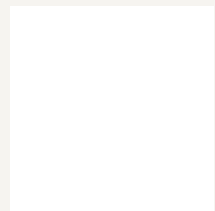
Approximate Gross Internal Area = 98.7 sq m / 1062 sq ft



Illustration for identification purposes only, measurements are approximate, not to scale. Winkworth © 2025 (ID1192076)

Score	Energy rating	Current	Potential
92+	A		
81-91	B		
69-80	C		
55-68	D		
39-54	E		
21-38	F		
1-20	G		

For more information, scan the QR code or visit the link below



<https://www.winkworth.co.uk/sale/property/BOR250100>

Where no figures are shown, we have been unable to ascertain the information. All figures that are shown were correct at the time of printing.

## Borehamwood

020 8953 8899 | [borehamwood@winkworth.co.uk](mailto:borehamwood@winkworth.co.uk)