



CITYBRIDGE HOUSE, GOSWELL ROAD, LONDON, EC1V
£650,000 LEASEHOLD APPROX. 95 YEARS REMAINING

Winkworth



GOSWELL ROAD, EC1V

Providing 740 square feet of living space, this handsome home is offered to the market in immaculate condition and chain free.

This spacious double bedroom, split level apartment is situated on the First floor within this highly impressive warehouse conversion.

The property has been refurbished to a good standard and is flooded with natural light. The accommodation comprises of an inviting hallway, a generous double bedroom with large Crittall styled windows, a modern Bathroom room that is tiled from floor to ceiling with modern grey subway tiling and a huge dual aspect reception room with Crittall styled windows.

Citybridge House is within a short walk from all the amenities of Upper Street and trendy hot spots such as Exmouth Market.

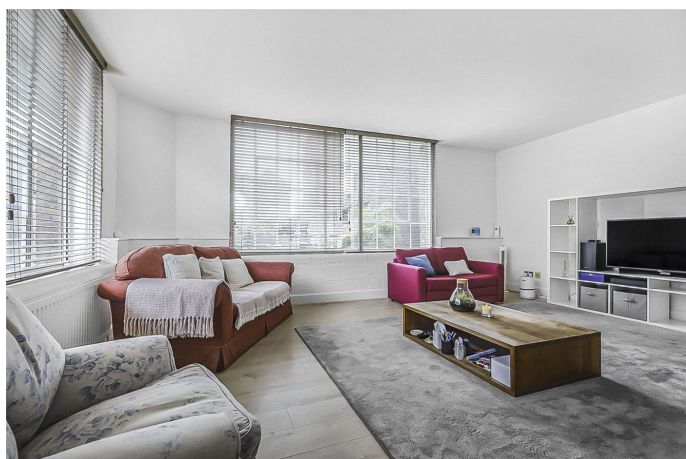
Angel, Barbican, Old Street, Farringdon and Kings Cross Stations are all easily accessed.

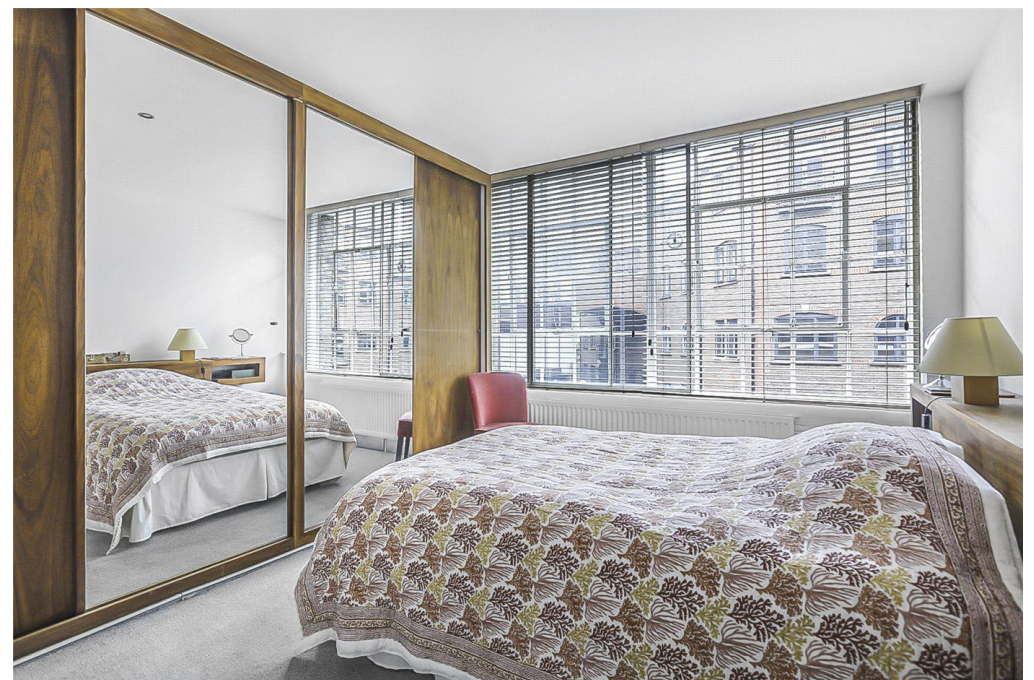
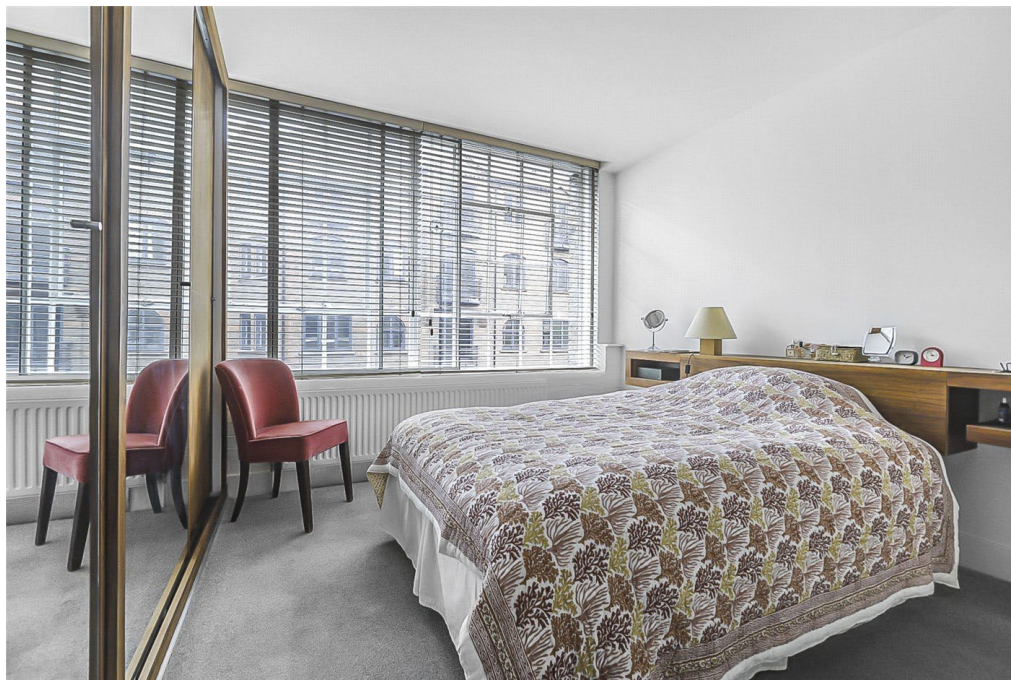
Leasehold approx. 95 years remaining

Council Tax Band E

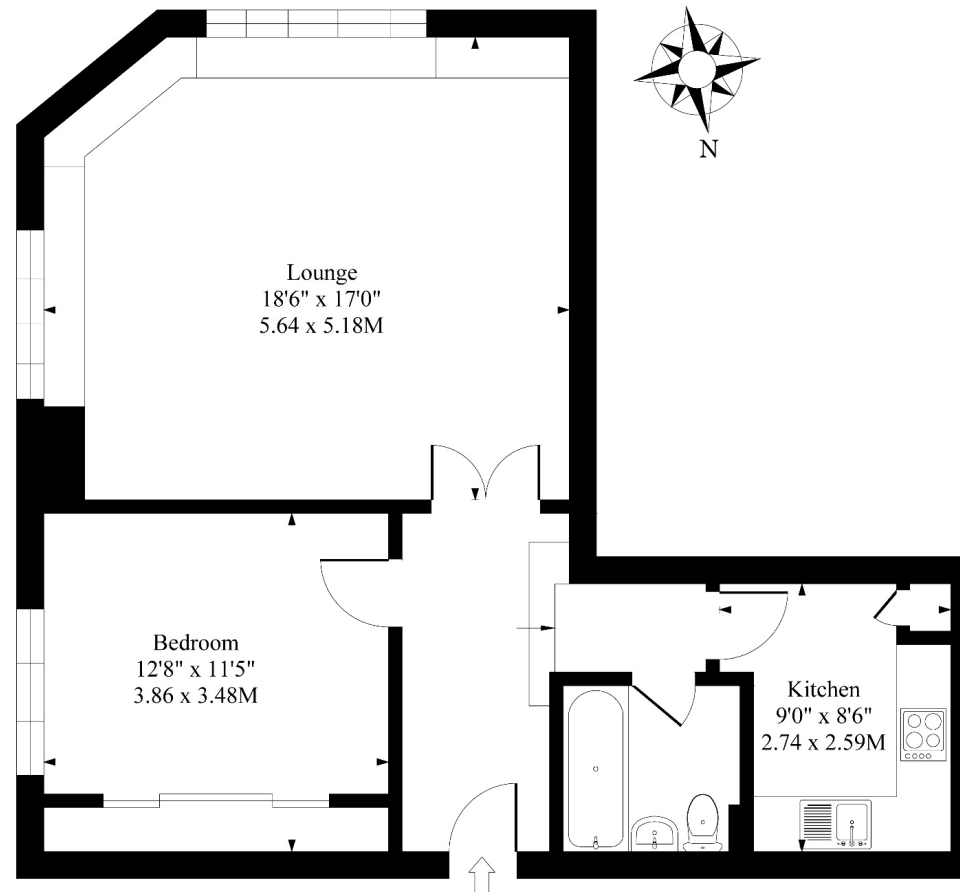
Ground Rent approx. £125 p/a

Service Charge approx. £3,468 p/a (paid bi-annually)





Citybridge House, 235-245 Goswell Rd EC1



First Floor

Approximate Gross Internal Area 707 Sq Ft - 65.68 Sq M

Measured in according with RICS guidelines. Every attempt is made to ensure accuracy
However all measurements are approximate.

The floor plan is illustrative purposes only and is not to scale

Clerkenwell & City | 020 7405 1288 | clerkewnell@winkworth.co.uk

winkworth.co.uk

Winkworth wishes to inform prospective buyers and tenants that these particulars are a guide and act as information only. All our details are given in good faith and believed to be correct at the time of printing but they don't form part of an offer or contract. No Winkworth employee has authority to make or give any representation or warranty in relation to this property. All fixtures and fittings, whether fitted or not are deemed removable by the vendor unless stated otherwise and room sizes are measured between internal wall surfaces, including furnishings.

Winkworth