

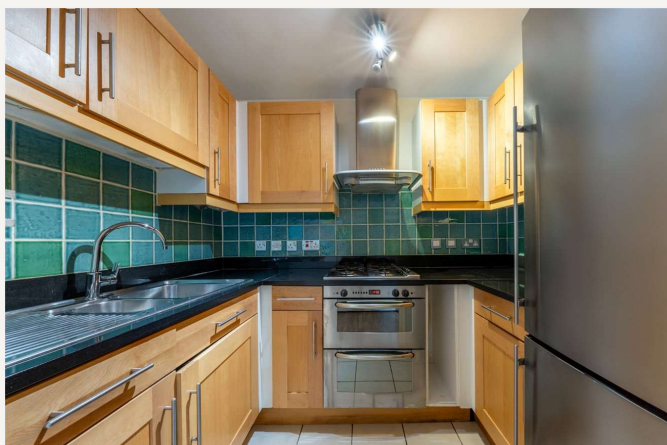


Hunter Lodge, Maida Vale, London, W9

£470,000 *Leasehold*



A well-proportioned two-bedroom (702 sq. ft.) ground floor apartment with access to a patio garden, forming part of a well-appointed modern block. This property includes membership to the Harbour Health Club and underground parking in this 24-hour secure development. Carlton Gate is within close distance of shops, cafes and Royal Oak Underground Station (Hammersmith & City line - 0.5 miles). Access to the Underground network and Paddington main line station are within a few minutes reach (1 mile).



Winkworth Maida Vale

020 7289 1692 | maidavale@winkworth.co.uk

Winkworth

for every step...



KEY FEATURES

- Principal Bedroom with En Suite Bathroom
- Second Double Bedroom
- Shower Room
- Reception/Dining Room
- Kitchen
- Patio/Terrace
- Underground Parking
- Leasehold



MATERIAL INFO

Tenure: Leasehold

Lease Expiry Date: 01/01/2114

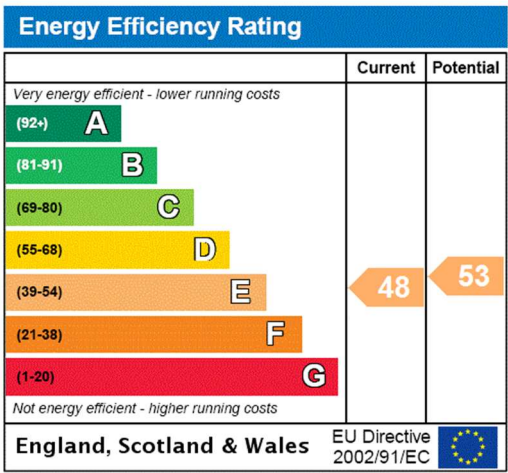
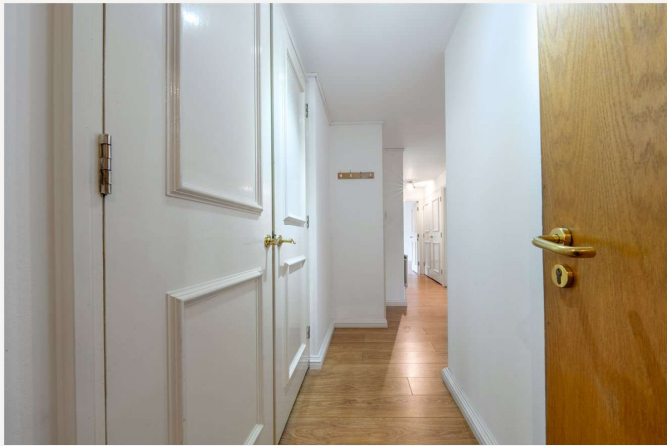
Service Charge: £5,475.32 per annum

Ground Rent: £150 Annually (subject to increase)

Council Tax Band: F

EPC rating: E





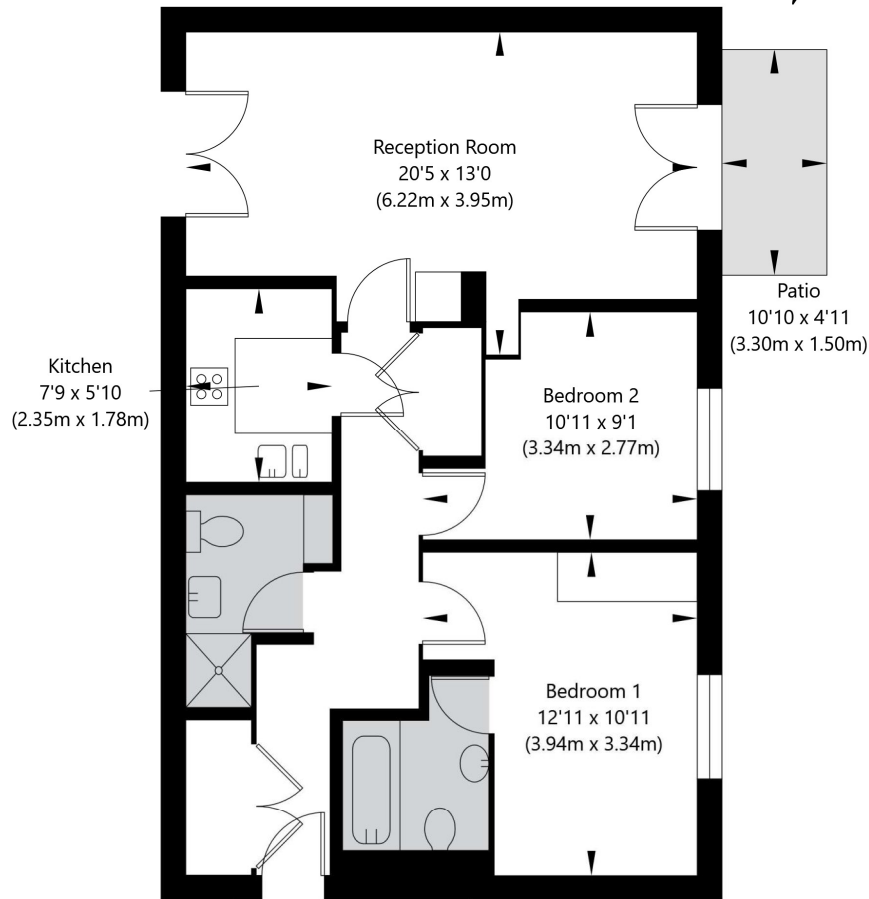
For more information, scan the QR code or visit the link below



<https://www.winkworth.co.uk/sale/property/MDV220015>

Hunter Lodge, Admiral Walk, London W9 3TQ

Ground Floor
GROSS INTERNAL FLOOR AREA
APPROX. 65.21 SQ M / 702 SQ FT



APPROXIMATE GROSS INTERNAL FLOOR AREA 65.21 SQ M / 702 SQ FT
THIS FLOOR PLAN IS FOR ILLUSTRATIVE PURPOSES ONLY AND
SHOULD BE USED FOR THIS PURPOSE BY PROSPECTIVE APPLICANTS AS ITS NOT TO SCALE.

(c) AMBERSHORE PIX LIMITED / PHOTO - VIDEO - FLOOR PLANS / 0800 999 1577 / WWW.AMBERSHOREPIX.CO.UK

Where no figures are shown, we have been unable to ascertain the information. All figures that are shown were correct at the time of printing.

Winkworth Maida Vale

020 7289 1692 | maidavale@winkworth.co.uk

Winkworth

for every step...

Winkworth wishes to inform prospective buyers and tenants that these particulars are a guide and act as information only. All our details are given in good faith and believed to be correct at the time of printing but they don't form part of an offer or contract. No Winkworth employee has authority to make or give any representation or warranty in relation to this property. All fixtures and fittings, whether fitted or not are deemed removable by the vendor unless stated otherwise and room sizes are measured between internal wall surfaces, including furnishings.