



ST GEORGES COURT, BROMPTON ROAD, SW3  
**£660 PER WEEK FURNISHED**

## STUNNING, SPACIOUS AND STYLISH ONE BEDROOM FLAT ON THE BROMPTON CROSS

### SUMMARY:

An exceptional, well presented and interior designed fourth floor flat in this prestigious block situated on Brompton Cross.

### AT A GLANCE

- Spacious One Bedroom Apartment
- Smart Communal Areas
- Fourth Floor with Lift Access
- Council Tax: £3,393.42

Knightsbridge & Chelsea | 0207 589 6616 | [knightsbridge@winkworth.co.uk](mailto:knightsbridge@winkworth.co.uk)

Tenant Fees Apply: Details of fees for tenant referencing, tenancy agreement admin fees and renewal fees are available on the Winkworth website and the link can be found with the displayed rent for the property. Tenants should ensure they are fully conversant with these upfront fees and other costs that are involved at the outset of the tenancy before making an offer to rent and your local Winkworth office will provide written details upon request.

[winkworth.co.uk](http://winkworth.co.uk)

**Winkworth**

See things differently



## DESCRIPTION

An exceptional, well presented and interior designed fourth floor flat in this prestigious block situated on Brompton Cross. The property which was refurbished in a minimalist style features hard wood floors throughout, concealed storage and a high quality kitchen and shower room. St George's Court benefits from a resident porter, two lifts and is moments from South Kensington.



## ACCOMMODATION

Long Let, 1 Bedroom, 1 Reception Room, 1 Bathroom, Flat/Apartment, Upper Floor with Lift, Residents Parking, Period, Town/City, Furnished, 640 Approx Sq Ft

46 St George's Court  
Knightsbridge, London SW3  
Approximate Gross Internal Floor Area  
640 sq ft / 59.4 sq m

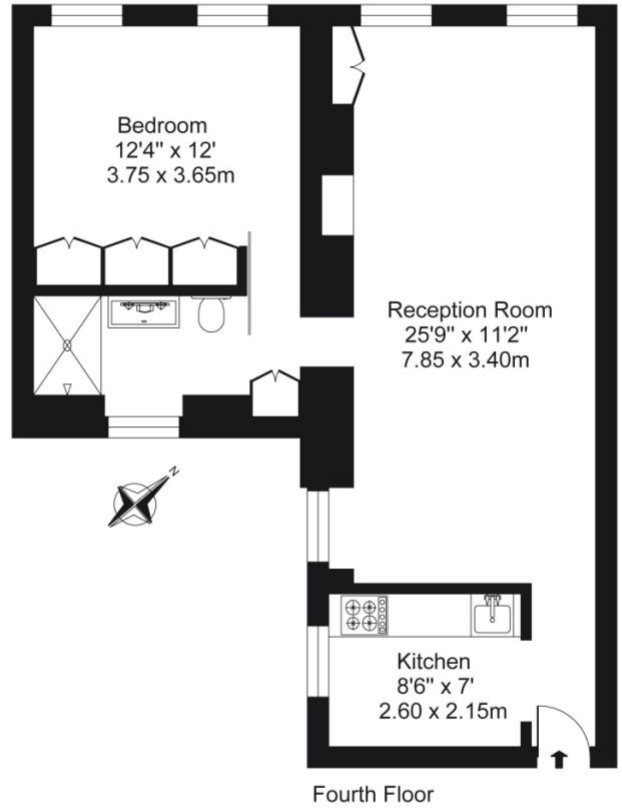
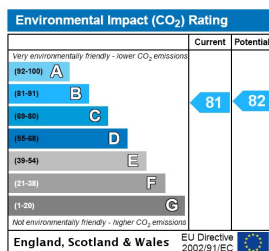
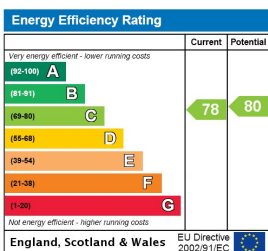


ILLUSTRATION FOR IDENTIFICATION PURPOSES ONLY

ALL MEASUREMENTS ARE MAXIMUM, AND INCLUDE WINDOW BAYS AND WARDROBES WHERE APPLICABLE  
THIS PLAN MUST NOT BE REPRODUCED BY ANY OTHER PERSON WITHOUT PERMISSION.

This floorplan is for illustration purposes only and is not to scale. The position and size of doors, windows, appliances and other features are approximate.



Knightsbridge & Chelsea | 0207 589 6616 | knightsbridge@winkworth.co.uk

**Winkworth**

*winkworth.co.uk*

See things differently

Winkworth wishes to inform prospective buyers and tenants that these particulars are a guide and act as information only. All our details are given in good faith and believed to be correct at the time of printing but they don't form part of an offer or contract. No Winkworth employee has authority to make or give any representation or warranty in relation to this property. All fixtures and fittings, whether fitted or not are deemed removable by the vendor unless stated otherwise and room sizes are measured between internal wall surfaces, including furnishings.