

Berkeley Court, London, NW1
£2,900,000 *LEASEHOLD*

5  2  5 



Winkworth Knightsbridge & Chelsea
020 7589 6616 | knightsbridge@winkworth.co.uk

Winkworth
for every step...

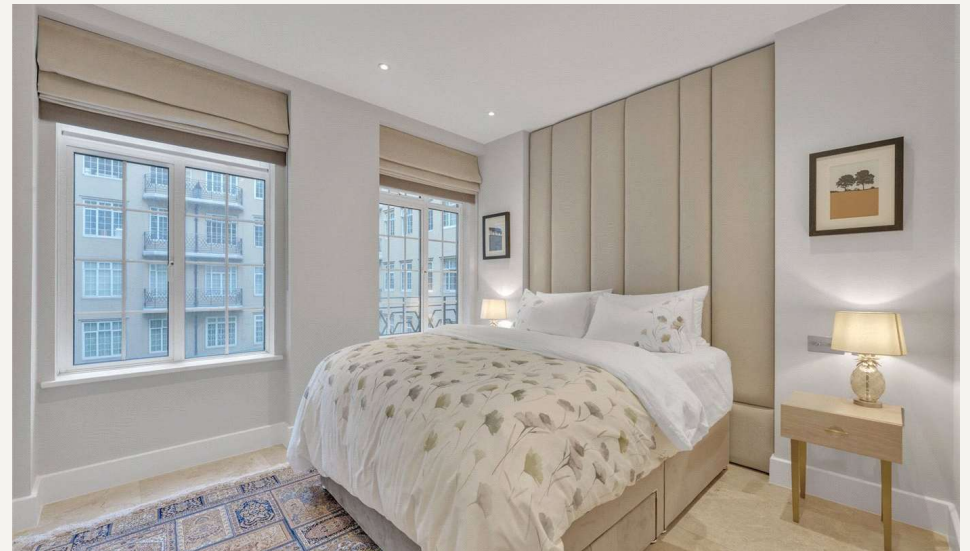
A grand five-bedroom residence moments from Baker Street and Regent's Park

ABOUT THIS FLAT

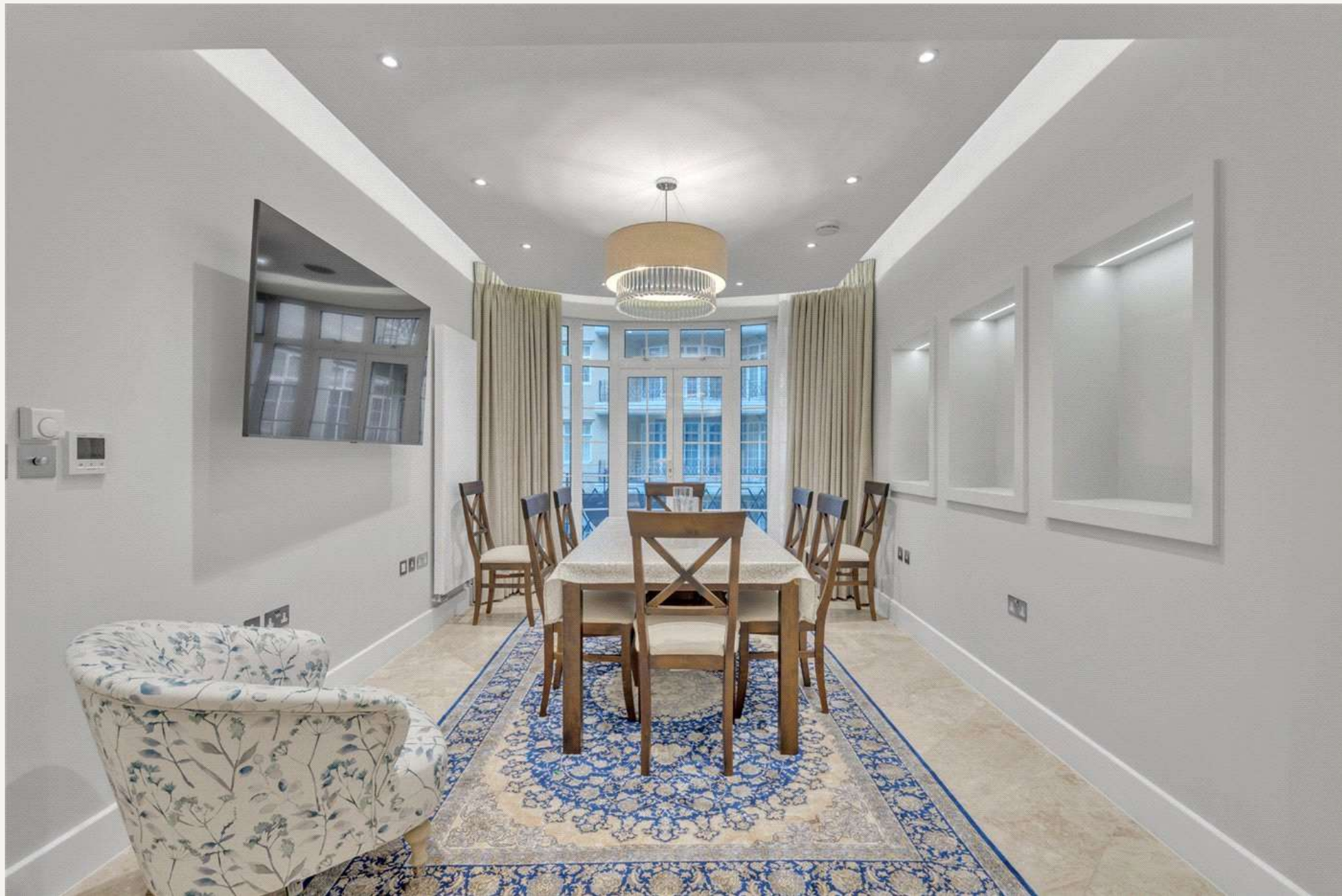
We are proud to present this stunning five-bedroom, five-bathroom apartment, located on the second-floor of this charming art-deco apartment building, with 24hr concierge and a beautiful communal entrance with marble floors and water features. The property has been recently redecorated and benefits from a 19ft reception with inter-connecting dining room, which opens out on to a private balcony over-looking communal gardens. There is also a separate kitchen and guest WC with both period and modern features throughout. This development benefits from an amazing roof terrace, with far-reaching views across London. Access to the building is from Glentworth Street, which is less than 100 meters away from Baker Street Underground Station (Jubilee, Bakerloo, Hammersmith, City & Circle and Metropolitan lines). Furthermore, Regent's Park is only 200 meters away.

KEY FEATURES

- 5 bedrooms
- 2 reception room
- 5 bathrooms
- 2,000 Square Feet
- Upper floor with lift
- Porter / Concierge









FINER DETAILS

- Tenure: Leasehold
- Term: 962 years
- Service Charge: £15,725 pa
- Ground Rent: £100 pa
- Council Tax Band: G

Score	Energy rating	Current	Potential
92+	A		
81-91	B		
69-80	C		
55-68	D	64 D	66 D
39-54	E		
21-38	F		
1-20	G		



APPROXIMATE GROSS INTERNAL FLOOR AREA 185.81 SQ M / 2000 SQ FT
THIS FLOOR PLAN IS FOR ILLUSTRATIVE PURPOSES ONLY AND
SHOULD BE USED FOR THIS PURPOSE BY PROSPECTIVE APPLICANTS AS ITS NOT TO SCALE.