



WOODSEER STREET, LONDON, E1
£675,000 FREEHOLD

EXTENDED THREE BEDROOM TERRACED HOUSE WITH PRIVATE GARDEN AND PARKING JUST OFF BRICK LANE

Shoreditch | 020 7749 7650 | shoreditch@winkworth.co.uk

Winkworth



DESCRIPTION:

A highly desirable three-bedroom two-bathroom freehold house spread over three floors with private garden and parking situated on a quiet residential side road just off Brick Lane. The property makes for a great family home for people living in the City or equally an ideal home for young professionals. The house flows well throughout and comprises entrance hall, fitted kitchen with gas hob and electric oven, washing machine and fridge/freezer and dishwasher. The living room/diner is generous in size and offers access via the back door to the garden. On the first floor you have two bedrooms and the family bathroom and on the top floor you have the master bedroom with en-suite.

The property is in a very central location between Shoreditch, Bishopsgate, Bethnal Green and Whitechapel (Crossrail) offering easy access into the City by foot or by the variety of transports links close by. Walking distance to Shoreditch High Street Station, Bethnal Green Tube and Overground Station, Whitechapel, Aldgate East and Liverpool Street Stations. You also have a wealth of local amenities with Brick Lane, Columbia Road, Spitalfields City Farm and Spitalfields Market all within close proximity.

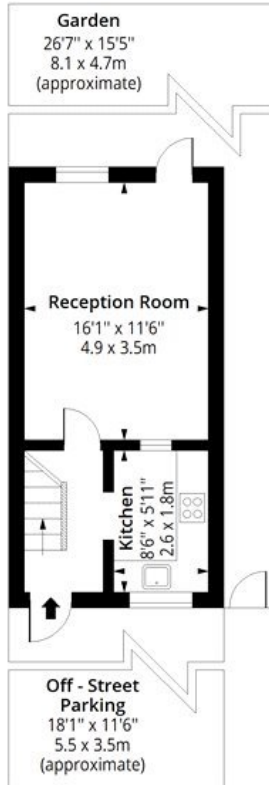
Winkworth



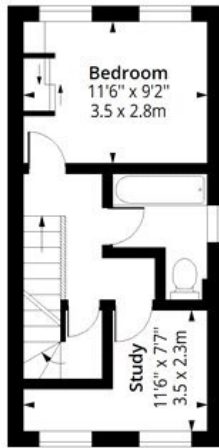
Winkworth

Woodseer Street, E1

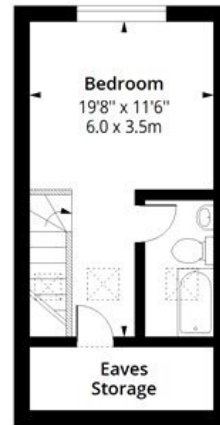
Approx. Gross Internal Area 814 Sq Ft - 75.62 Sq M



Ground Floor
Floor Area 294 Sq Ft - 27.31 Sq M



First Floor
Floor Area 294 Sq Ft - 27.31 Sq M

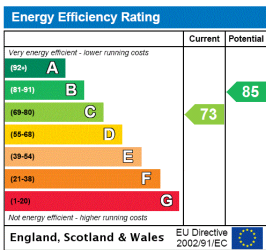


Second Floor
Floor Area 226 Sq Ft - 21.00 Sq M

Floor plan is for illustrative purposes only and is not to scale. Every attempt has been made to ensure the accuracy of the floor plan shown, however all measurements, fixtures, fittings and data shown are an approximate interpretation for illustrative purposes only.

lpaplus.com

This floorplan is for illustration purposes only and is not to scale. The position and size of doors, windows, appliances and other features are approximate.



Shoreditch | 020 7749 7650 | shoreditch@winkworth.co.uk



winkworth.co.uk

See things differently

Winkworth wishes to inform prospective buyers and tenants that these particulars are a guide and act as information only. All our details are given in good faith and believed to be correct at the time of printing but they don't form part of an offer or contract. No Winkworth employee has authority to make or give any representation or warranty in relation to this property. All fixtures and fittings, whether fitted or not are deemed removable by the vendor unless stated otherwise and room sizes are measured between internal wall surfaces, including furnishings.