



BELTON ROAD, WILLESSEN GREEN, LONDON, NW2

£1,700 PER MONTH FURNISHED / PART FURNISHED / UNFURNISHED

TWO BEDROOM APARTMENT IN THE HEART OF WILLESSEN GREEN

Kensal Rise & Queens Park | 0208 960 4947 | kensalrise@winkworth.co.uk

Winkworth

for every step...

winkworth.co.uk



DESCRIPTION:

We are pleased to present this lovely two double bedroom apartment which is within a well maintained Victorian conversion. Newly decorated and available to rent now.

The apartment comprises of two double bedrooms which have been tastefully decorated and have wooden floors throughout. The front bedroom has a large bay window and has ample of light as well as built in wardrobes and shelves.

The second bedroom, also a good size also benefits from having built in wardrobes.

The reception is long and thin with space for a lounge area and dining space which leads flows to a modern kitchen.

The kitchen is fully fitted and has ample storage.

Offered Part Furnished

Front bedroom

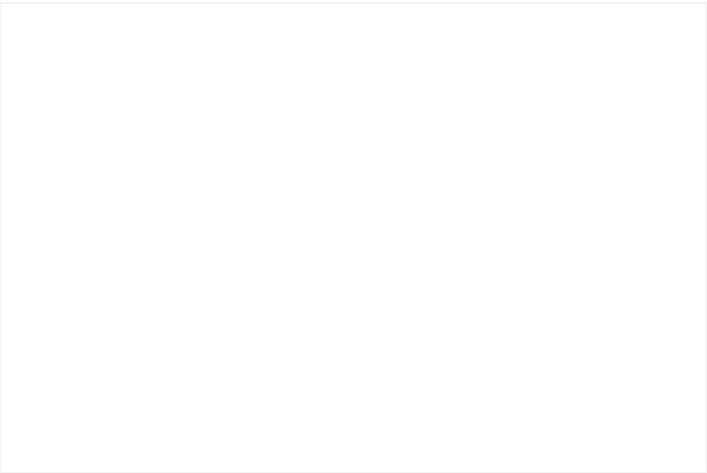
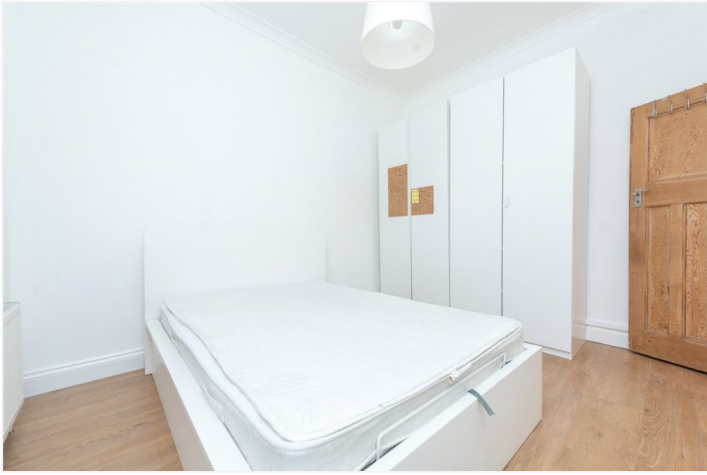
- Bedframe (no mattress)
- Free standing wardrobe
- Built in wardrobes

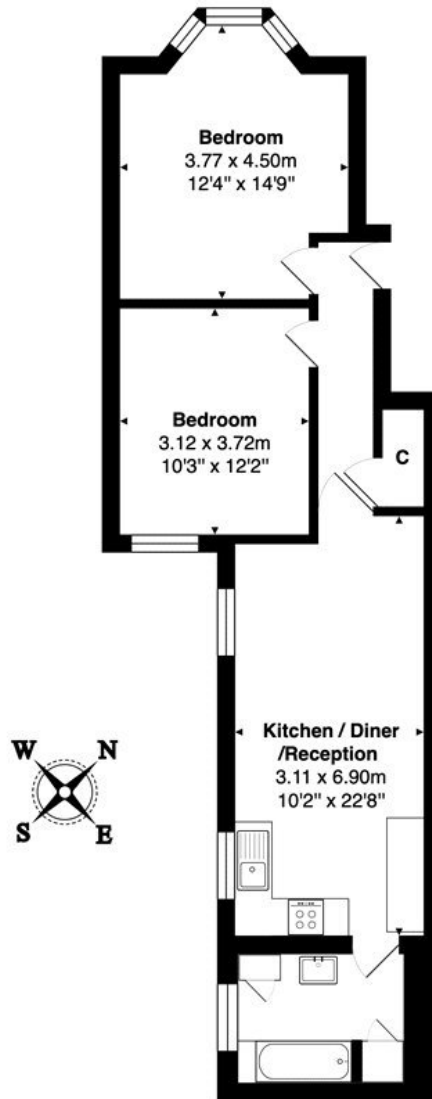
Middle bedroom

- Bed frame + mattress
- Book Shelf
- Lamp
- Built in wardrobes

In the kitchen/sitting room following items belong to the property:

- Sofa - landlord open to replacing if requested
- Reclining chair
- Book shelf
- Grey fridge Freeze (different to the pictures)
- Stool
- Bin

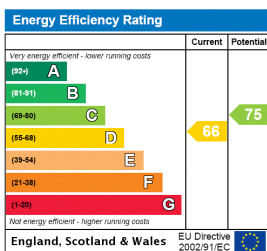




Total Area: 60.7 m² ... 654 ft²

All measurements are approximate and for display purposes only

This floorplan is for illustration purposes only and is not to scale. The position and size of doors, windows, appliances and other features are approximate.



Deposit: 5 weeks rent

Holding Deposit: 1 weeks rent

Council Tax Band: C

Where no figures are shown, we have been unable to ascertain the information. All figures that are shown were correct at the time of printing.

Winkworth

for every step...

Kensal Rise & Queens Park | 0208 960 4947 | kensalrise@winkworth.co.uk

winkworth.co.uk

Winkworth wishes to inform prospective buyers and tenants that these particulars are a guide and act as information only. All our details are given in good faith and believed to be correct at the time of printing but they don't form part of an offer or contract. No Winkworth employee has authority to make or give any representation or warranty in relation to this property. All fixtures and fittings, whether fitted or not are deemed removable by the vendor unless stated otherwise and room sizes are measured between internal wall surfaces, including furnishings.