



GOLDERS GREEN CRESCENT, NW11
£1,350,000 FREEHOLD

A CHARACTER 5 BEDROOM 3 BATHROOM SEMI-DETACHED FAMILY HOME IN CENTRAL GOLDERS GREEN.

Golders Green | 020 8458 8313 | goldersgreen@winkworth.co.uk

Winkworth

for every step...

winkworth.co.uk



DESCRIPTION:

A delightful 5 bedroom 3 bathroom character, semi-detached family home within minutes of Central Golders Green in excellent condition.

The property has spacious accommodation over 3 floors and in addition has a multi-use annexe to the rear

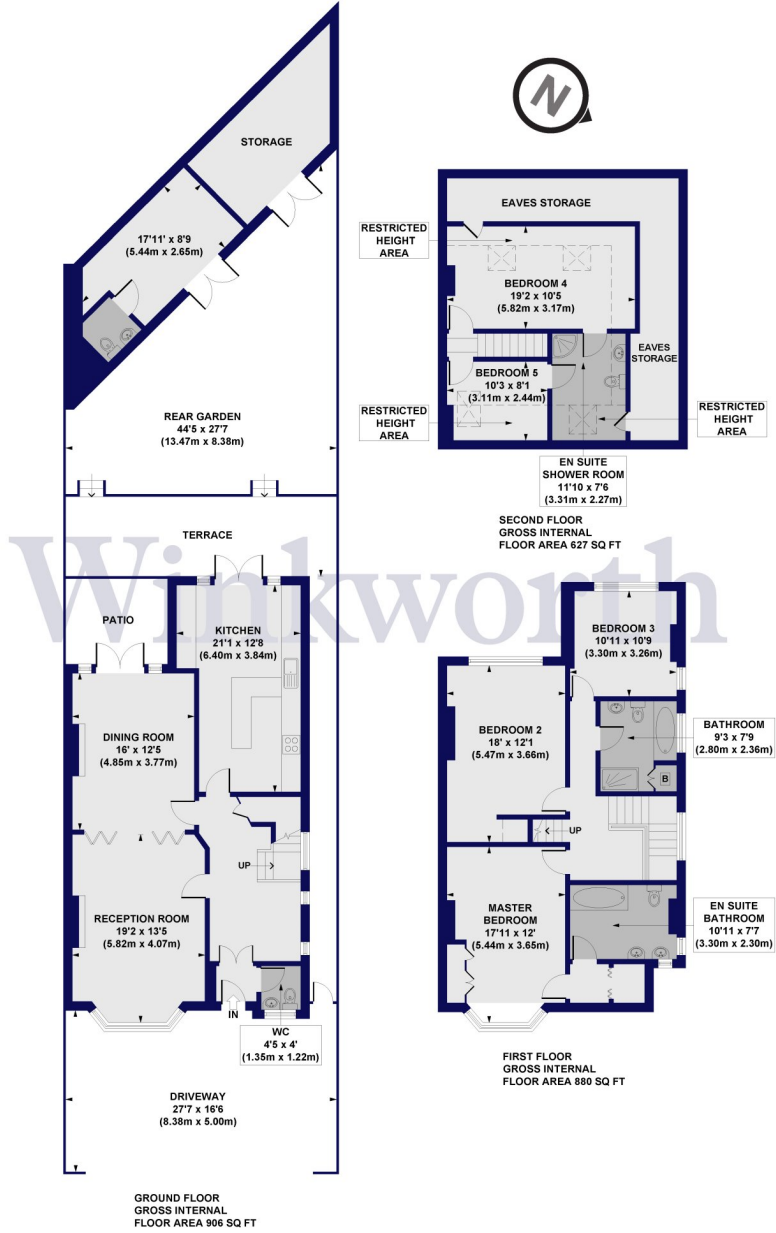
ACCOMMODATION

Freehold, 5 Bedrooms, 1 Reception Room, 3 Bathrooms, House, Semi Detached, Garden, Off Street Parking



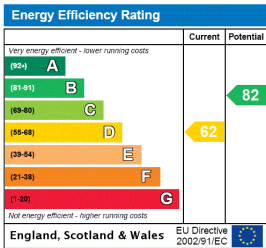
Golders Green Crescent, NW11

Approx. Gross Internal Floor Area 2713 sq. ft / 252.03 sq. m (Including Restricted Height Area, Eaves Storage & Out Building)
 Approx. Gross Internal Floor Area 2056 sq. ft / 191.00 sq. m (Excluding Restricted Height Area, Eaves Storage & Out Building)



All measurements of walls, doors, windows, fittings and appliances, including their size and location, are shown as standard sizes and do not constitute any warranty or representation by the seller, their agent or CP Creative. Any intending purchaser must satisfy himself by inspection or otherwise as to the correctness of the information contained in these plans.

This floorplan is for illustration purposes only and is not to scale. The position and size of doors, windows, appliances and other features are approximate.



Golders Green | 020 8458 8313 | goldersgreen@winkworth.co.uk



for every step...

winkworth.co.uk

Winkworth wishes to inform prospective buyers and tenants that these particulars are a guide and act as information only. All our details are given in good faith and believed to be correct at the time of printing but they don't form part of an offer or contract. No Winkworth employee has authority to make or give any representation or warranty in relation to this property. All fixtures and fittings, whether fitted or not are deemed removable by the vendor unless stated otherwise and room sizes are measured between internal wall surfaces, including furnishings.