



THICKET ROAD, SE20

£1,685 PER MONTH UNFURNISHED

CONTEMPORARY ONE BEDROOM PERIOD COVERSION TO RENT

Crystal Palace | 02038693222 | crystalpalace@winkworth.co.uk

Winkworth

for every step...

winkworth.co.uk



DESCRIPTION:

Winkworth is pleased to offer this beautifully presented one bedroom Victorian conversion flat on the ever-popular Thicket Road.

The accommodation comprises entrance hallway with in-built storage, spacious open kitchen and reception room with bay window allowing for an abundance of natural light, modern bathroom and double bedroom.

The property benefits from its own front door & has access to well-maintained communal gardens. Offered unfurnished & available from mid-August.

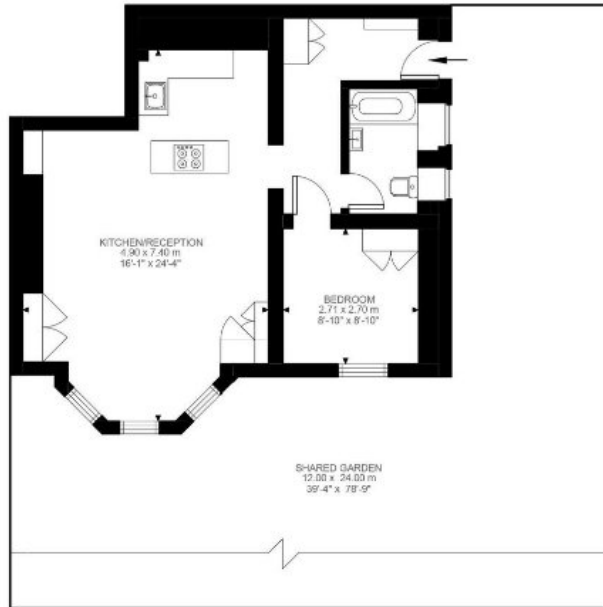
Ideally located for Crystal Palace Park and within easy reach of Crystal Palace, Anerley and Penge West stations.

AT A GLANCE

- One bedroom
- Victorian conversion
- Lower ground floor
- Open plan kitchen & reception
- Great in-built storage
- Modern finish throughout
- Communal gardens
- Unfurnished







Ground Floor
596 ft²

Thicket Road, SE20
Approximate Gross Internal Area
55.35 SQ.M / 596 SQ.FT

Illustration for identification purposes only. Not to scale.
Floor Plan Drawn According To RICS Guidelines.

This floorplan is for illustration purposes only and is not to scale. The position and size of doors, windows, appliances and other features are approximate.

Deposit: £0.00

Holding Deposit:

Council Tax Band: B

Where no figures are shown, we have been unable to ascertain the information. All figures that are shown were correct at the time of printing.

Energy Efficiency Rating		Current	Potential
Very energy efficient - lower running costs			
(92)	A		
(81-91)	B		
(69-80)	C	69	77
(55-68)	D		
(39-54)	E		
(21-58)	F		
(1-20)	G		
Not energy efficient - higher running costs			
England, Scotland & Wales		EU Directive 2002/91/EC	

Crystal Palace | 02038693222 | crystalpalace@winkworth.co.uk



for every step...

winkworth.co.uk

Winkworth wishes to inform prospective buyers and tenants that these particulars are a guide and act as information only. All our details are given in good faith and believed to be correct at the time of printing but they don't form part of an offer or contract. No Winkworth employee has authority to make or give any representation or warranty in relation to this property. All fixtures and fittings, whether fitted or not are deemed removable by the vendor unless stated otherwise and room sizes are measured between internal wall surfaces, including furnishings.