



REDWOOD RISE, HERTFORDSHIRE, WD6  
**£475,000 FREEHOLD**

## THREE BEDROOM TERRACE HOUSE WITH OFF STREET PARKING AND GARAGE

Borehamwood | 020 8953 8899 | [borehamwood@winkworth.co.uk](mailto:borehamwood@winkworth.co.uk)





Winkworth

## DESCRIPTION:

Located in a small cul-e-sac just off Stanborough Avenue , is this well presented mid terrace family home comprises, through lounge/diner, kitchen and guest wc to the ground floor. On the first floor there are three bedrooms and family bathroom. The property has recently been decorated in neutral colours and benefits from a southerly facing rear garden, mainly laid to lawn and patio. Garage and off street parking for two cars.

The property is being sold on a chain free basis

## AT A GLANCE

- 3 Bedrooms
- Kitchen
- Living Room/Dining Room
- Guest Wc
- Southerly Rear Garden
- Garage
- 945 Square Feet

Council Tax Band D



Winkworth



Winkworth







Approximate Gross Internal Area = 87.8 sq m / 945 sq ft

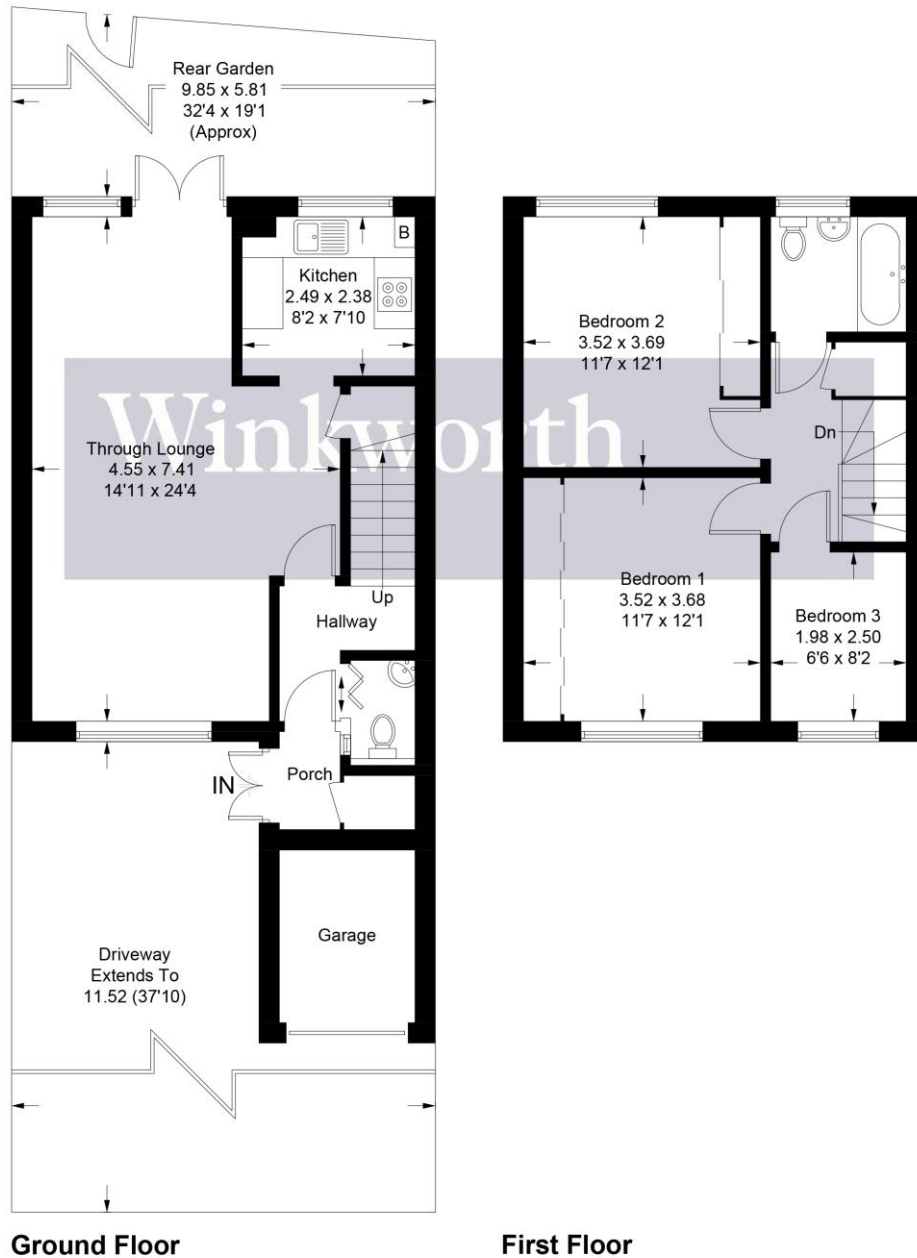
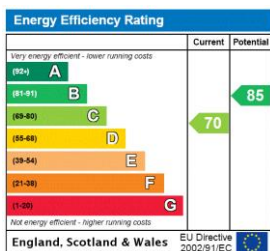


Illustration for identification purposes only, measurements are approximate, not to scale. Winkworth © 2022 (ID916657)

This floorplan is for illustration purposes only and is not to scale. The position and size of doors, windows, appliances and other features are approximate.



Borehamwood | 020 8953 8899 | borehamwood@winkworth.co.uk