



MAFEKING AVENUE, TW8
£550,000 FREEHOLD

A DOUBLE FRONTED PERIOD HOUSE

Chiswick | 020 8994 7096 | chiswick@winkworth.co.uk

Winkworth

for every step...

winkworth.co.uk



DESCRIPTION:

A particularly pretty, double fronted period house which offers bright and airy accommodation with two reception rooms and a country style kitchen/breakfast room with direct access to the Southerly aspect rear garden with useful side access to the front. The current owners have added a downstairs WC under the stairs. There are two double bedrooms to the first floor with a great office room currently in use as another bedroom forming part of an extension accessed via the main bedroom. The bathroom is a good size and has a rear aspect window and a skylight. Mafeking Avenue is a sought-after road, and the smart commuter will be less than half a mile from Brentford train station (Zone 4) with its excellent service (every 15 minutes) into London, Waterloo. Brentford High Street and good access to the A4 and M4 are both within close proximity. With delightful walks along the Thames, Strand on The Green and Kew providing just some of the stunning green spaces nearby. An early viewing is imperative to avoid disappointment. Council Tax Band D - Hounslow Borough.

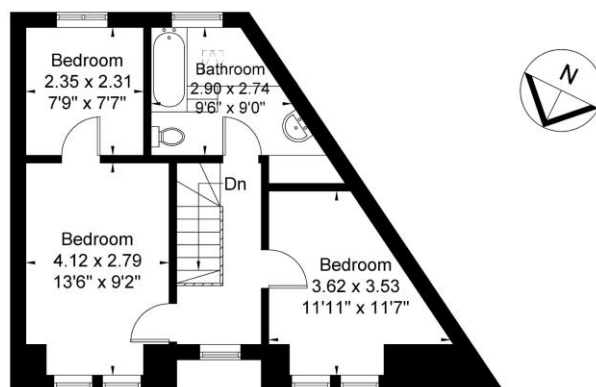
ACCOMMODATION

- End Terrace House
- Period Double Fronted
- Two Double Bedrooms
- Two Reception Rooms
- Office/Study
- First Floor Bathroom
- Downstairs WC
- Southerly Aspect Rear Garden

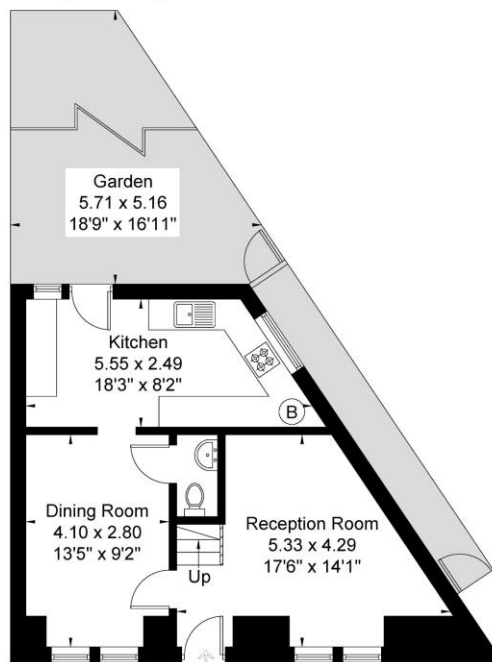


Mafeking Avenue

Approximate Gross Internal Area = 83.1 sq m / 894 sq ft



First Floor
41.2 sq m / 443 sq ft

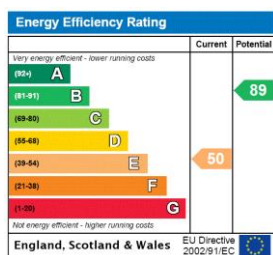


Ground Floor
41.9 sq m / 451 sq ft

Winkworth

Although every attempt has been made to ensure accuracy, all measurements are approximate.
The floorplan is for illustrative purposes only and not to scale.
© www.perspective.co.uk

This floorplan is for illustration purposes only and is not to scale. The position and size of doors, windows, appliances and other features are approximate.



Chiswick | 020 8994 7096 | chiswick@winkworth.co.uk

Winkworth

for every step...

winkworth.co.uk

Winkworth wishes to inform prospective buyers and tenants that these particulars are a guide and act as information only. All our details are given in good faith and believed to be correct at the time of printing but they don't form part of an offer or contract. No Winkworth employee has authority to make or give any representation or warranty in relation to this property. All fixtures and fittings, whether fitted or not are deemed removable by the vendor unless stated otherwise and room sizes are measured between internal wall surfaces, including furnishings.