

Larden Road, Acton, W3

£1,300,000 Freehold

A substantial five bedroom semi-detached Edwardian family house.

Double Reception Room | Kitchen | 5 Bedrooms | 2 En Suite Bathrooms | Bathrooms | Cloakroom | Garden | Home Office / Garden Room | 1,848 Sq Ft / 171 Sq M | Council Tax Banding F | EPC Rating Band D

Winkworth



LOCATION

Larden Road is found on the borders of Shepherd's Bush and Acton, close to both Acton Park and Wendell Park. The David Lloyd and Mode Club health clubs are both close by, whilst London Overground services are on offer at Acton Central station, which is circa 0.5 miles away. The amenities of Chiswick, Shepherds Bush and Acton are all within easy reach.

DESCRIPTION

Offered in superb condition and having been fully extended, the house offers well-proportioned accommodation which comprises entrance hall, double reception room, cloakroom/utility room and large kitchen / family room on the ground floor; the first floor three bedrooms and two bathrooms (one being en suite) and the top floor two further bedrooms, one with en suite bathroom. The house further benefits from a good size rear garden (with side access) and home office/garden room.

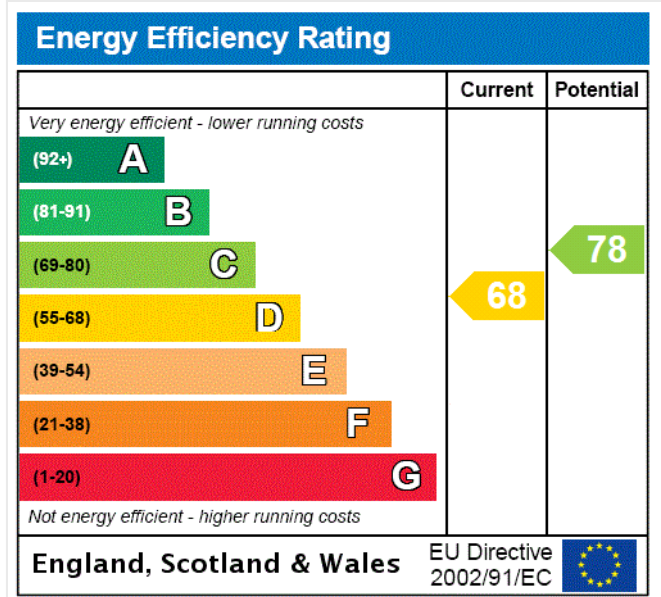
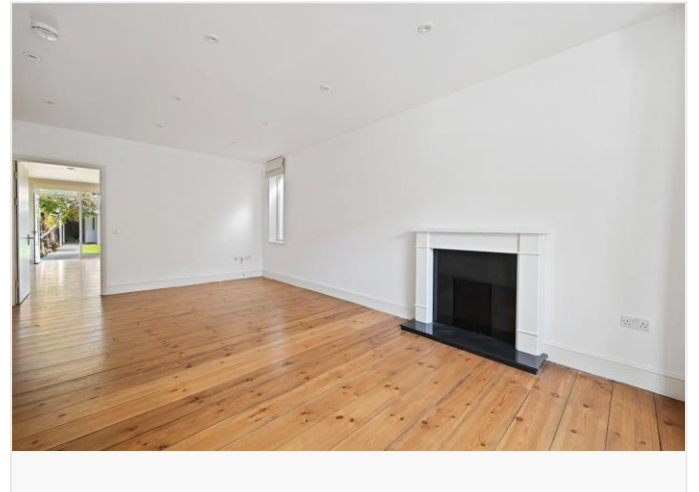


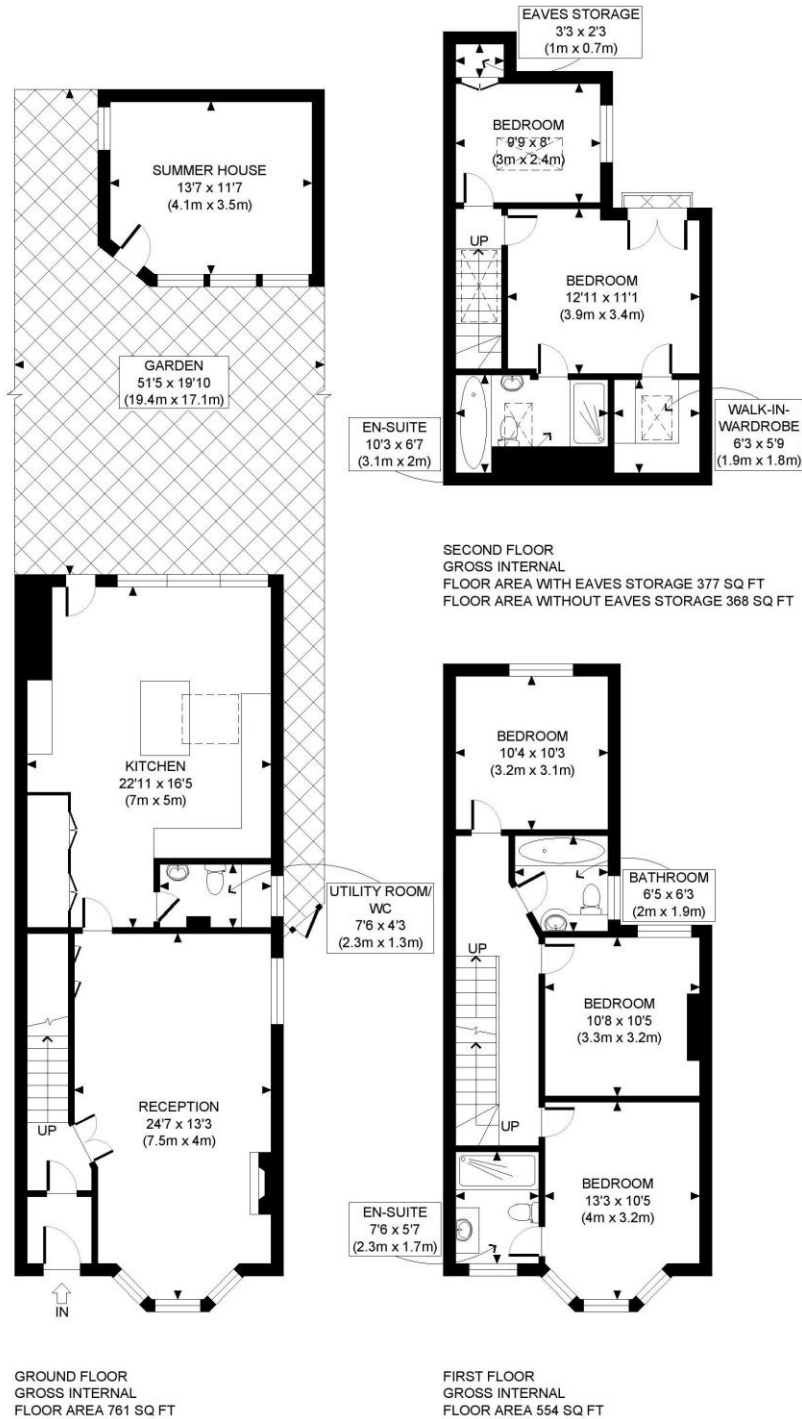


LOCAL AUTHORITY
London Borough of Ealing

TENURE
Freehold.

PRICE: £1,300,000 Freehold





PROPERTY PHOTO PLANS .CO.UK

ONE STOP SHOP FOR PROPERTY MARKETING

This plan is for illustrative purposes only and should be used as such by any prospective client. Whilst every attempt has been made to ensure the accuracy of the Floor Plan contained here, measurements of the doors, windows, rooms and any other items are approximate and no responsibility is taken for any errors, omissions, or misstatement. The services, systems and appliances shown have not been tested and no guarantee as to the operability or efficiency can be given.

The displayed square footage is taken from the floor plans with measurements created using the Royal Institute of Chartered Surveyors' Code of Practice for Measuring. These measurements are approximate and included for illustrative purposes only. Winkworth does not make any representation as to the accuracy of these measurements and you should seek to verify them for yourself. Winkworth accept no liability for any loss you may suffer if you rely on these measurements.

Shepherds Bush | 020 8735 3266 | shepherdsbush@winkworth.co.uk

Winkworth

for every step...

Under the Property Misdescriptions Act 1991, these Particulars are a guide and act as information only. All details are given in good faith and are believed to be correct at time of printing. Winkworth give no representation as to their accuracy and potential purchasers or tenants must satisfy themselves by inspection or otherwise as to their correctness. No employee of Winkworth has authority to make or give any representation or warranty in relation to this property.