

EGERTON CRESCENT, SW3
£995 PER WEEK UNFURNISHED

AN ELEGANT RESIDENCE IN ONE OF CHELSEA'S MOST CELEBRATED CRESCENTS

Knightsbridge & Chelsea | 0207 589 6616 |
knightsbridge@winkworth.co.uk



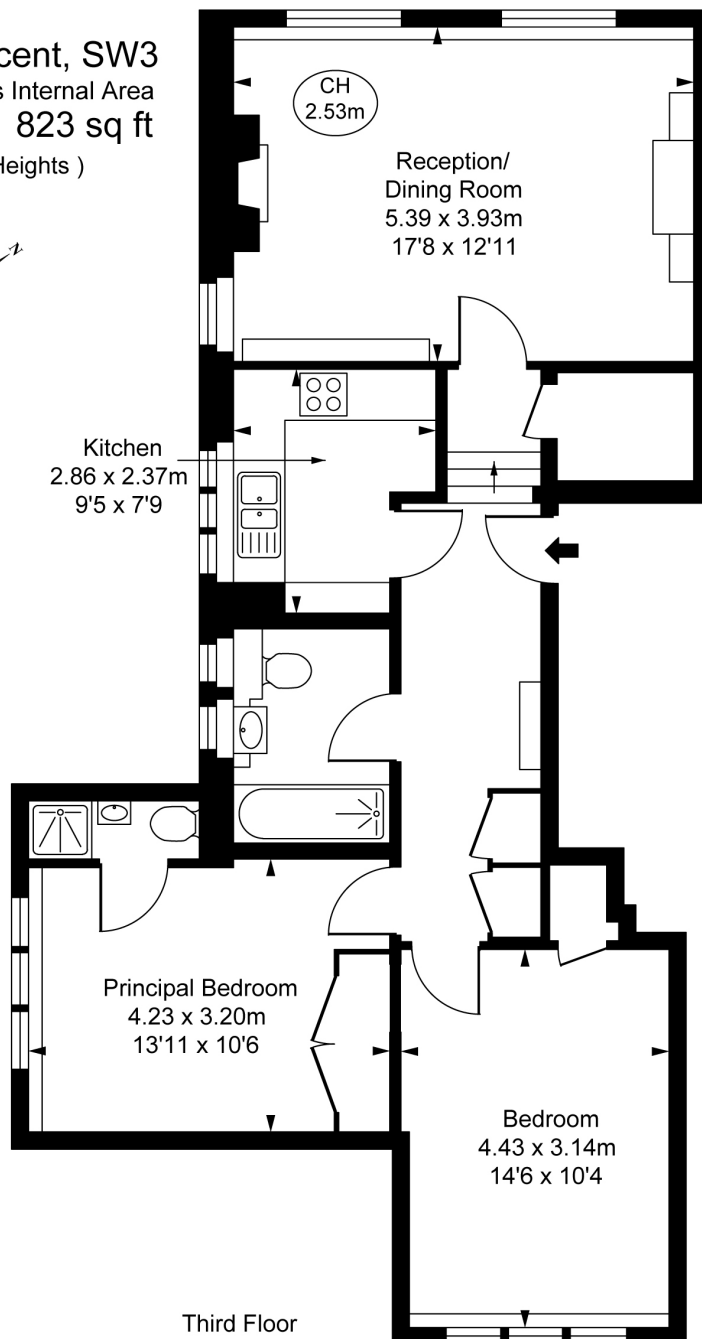
DESCRIPTION:

Located on the third floor of a stunning period building, this well-proportioned 823 sq ft apartment offers elegant living in one of Chelsea's most desirable addresses. The property features a bright reception/dining room with high ceilings, a separate modern kitchen, two spacious double bedrooms, and two sleek bathrooms (including an en-suite).





Egerton Crescent, SW3
 Approximate Gross Internal Area
76.43 sq m / 823 sq ft
 (CH = Ceiling Heights)



Third Floor

This plan is not to scale. It is for guidance and not for valuation purposes.
 All measurements and areas are approximate only, and have been prepared in accordance with the current edition of the RICS Code of Measuring Practice.
 © Fulham Performance

This floorplan is for illustration purposes only and is not to scale. The position and size of doors, windows, appliances and other features are approximate.

Score	Energy rating	Current	Potential
92+	A		
81-91	B		
69-80	C		75 C
55-68	D		
39-54	E	48 E	
21-38	F		
1-20	G		

Deposit: £4,975.00

Holding Deposit: £995.00

Council Tax Band: G

Where no figures are shown, we have been unable to ascertain the information. All figures that are shown were correct at the time of printing.