

CHELSEA CLOISTERS, SW3  
£375,000 LEASEHOLD

## BRIGHT STUDIO FLAT IN THE HEART OF CHELSEA

Knightsbridge & Chelsea | 0207 589 6616 |  
knightsbridge@winkworth.co.uk

**Winkworth**

for every step...

*winkworth.co.uk*





## DESCRIPTION:

Located on sought-after Sloane Avenue, this bright and well-presented studio flat is set within the popular Chelsea Cloisters. Ideally positioned between South Kensington and the King's Road, the flat offers an excellent first-time purchase, pied-à-terre, or investment opportunity. Residents benefit from 24-hour concierge services, and the property is within walking distance of renowned shops, restaurants, and excellent transport links.



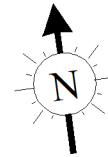




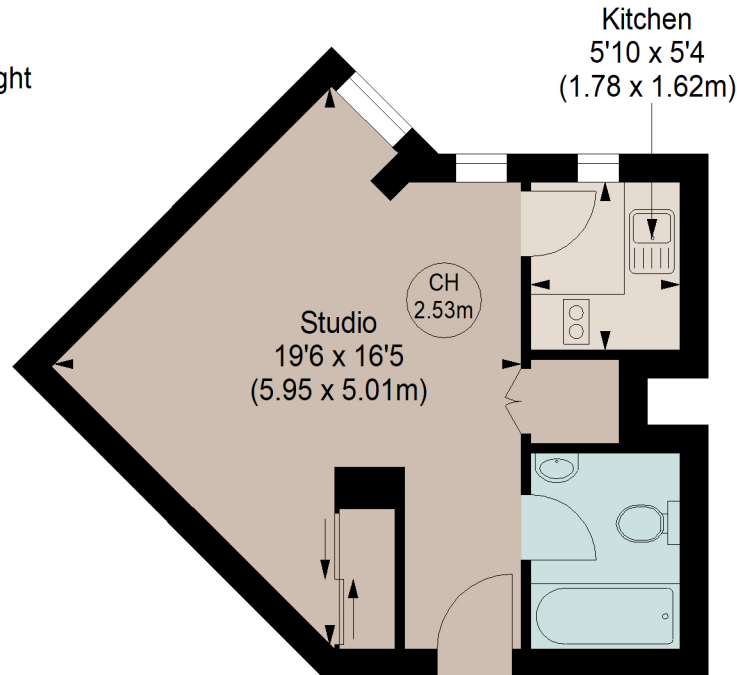


# Chelsea Cloisters, SW3

Approximate gross internal area  
295 sq ft / 27.41 sq m



Key :  
CH - Ceiling Height



## FOURTH FLOOR

Although every attempt has been made to ensure accuracy, all measurements are approximate.  
This floorplan is for illustrative purposes only and not to scale.  
Measured in accordance with RICS standards.

This floorplan is for illustration purposes only and is not to scale. The position and size of doors, windows, appliances and other features are approximate.

Score	Energy rating	Current	Potential
92+	A		
81-91	B		
69-80	C	74 C	80 C
55-68	D		
39-54	E		
21-38	F		
1-20	G		

**Tenure:** Leasehold

**Term:** 175 year and 0 months

**Service Charge:** £2500 per annum

**Ground Rent:** Peppercorn

**Council Tax Band:** E

Where no figures are shown, we have been unable to ascertain the information. All figures that are shown were correct at the time of printing.

Knightsbridge & Chelsea | 0207 589 6616 | [knightsbridge@winkworth.co.uk](mailto:knightsbridge@winkworth.co.uk)

# Winkworth

for every step...

[winkworth.co.uk](http://winkworth.co.uk)

Winkworth wishes to inform prospective buyers and tenants that these particulars are a guide and act as information only. All our details are given in good faith and believed to be correct at the time of printing but they don't form part of an offer or contract. No Winkworth employee has authority to make or give any representation or warranty in relation to this property. All fixtures and fittings, whether fitted or not are deemed removable by the vendor unless stated otherwise and room sizes are measured between internal wall surfaces, including furnishings.