



GLOUCESTER STREET, SW1V

£795,000

LEASEHOLD

At a glance...

- Two Bedrooms
- Modern Kitchen
- Large Reception
- Own entrance
- Private Patio
- Council Tax Band: F

Winkworth

for every step...



Score	Energy rating	Current	Potential
92+	A		
81-91	B		
69-80	C		69 C
55-68	D	56 D	
39-54	E		
21-38	F		
1-20	G		

GLOUCESTER STREET, SW1V

£795,000

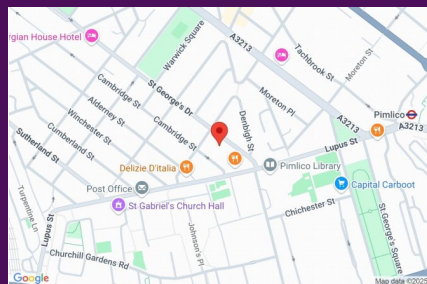
LEASEHOLD

A charming and incredibly rare, two-bedroom maisonette with the feel of a small house on the desirable Gloucester Street in the heart of the Pimlico Grid.

Accommodation on the ground floor comprises a bright reception room and a separate well-appointed kitchen with stairs leading down to two double bedrooms, family bathroom and a private patio garden.

Gloucester Street is ideally positioned for the coffee shops and local amenities of Lupus Street and Warwick Way, as well as the boutiques and restaurants of Churton and Moreton Street. The public park at St. George's Square and the Dolphin Square Health Club are both close by and popular with those who live in the area.

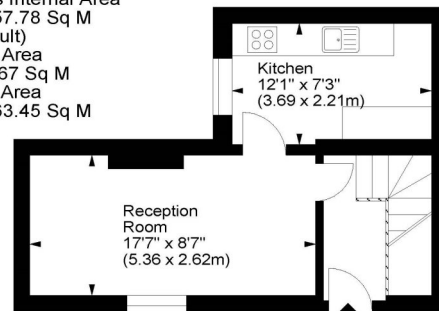
The nearest public transport can be found at Victoria's underground, mainline, bus and coach station providing direct links to the City, West End, Gatwick Airport and beyond.



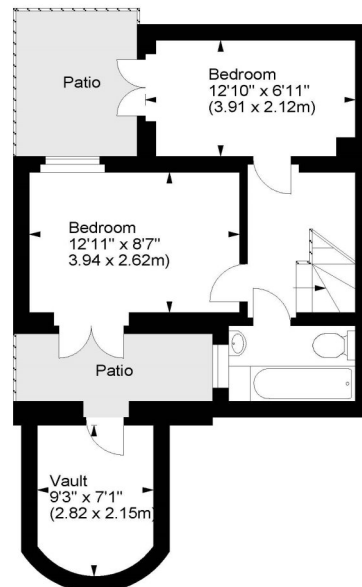
winkworth wishes to inform prospective buyers and tenants that these particulars are a guide and act as information only. All our details are given in good faith and believed to be correct at the time of printing but they don't form part of an offer or contract. No winkworth employee has authority to make or give any representation or warranty in relation to this property. All fixtures and fittings, whether fitted or not are deemed removable by the vendor unless stated otherwise and room sizes are measured between internal wall surfaces - including fireplaces.

Gloucester Street, SW1

Approx. Gross Internal Area
622 Sq Ft - 57.78 Sq M
(Excluding Vault)
Approx. Vault Area
61 Sq Ft - 5.67 Sq M
Approx. Total Area
683 Sq Ft - 63.45 Sq M



Ground Floor



Lower Ground Floor

For illustration purposes only. Not to scale.
All measurements are taken and shown at floor level.
www.r3photography.co.uk © Photography / Floor Plans / Lease Plans / EPCs



Pimlico & Westminster

020 7828 1786

pimlico@winkworth.co.uk

winkworth.co.uk/pimlico-westminster

Winkworth

for every step...