



**WOODBERRY GARDENS, NORTH FINCHLEY, LONDON, N12**  
**£525,000 LEASEHOLD**

## **A TWO BEDROOM GROUND FLOOR MAISONETTE**

Finchley | 020 8349 3388 | [finchley@winkworth.co.uk](mailto:finchley@winkworth.co.uk)





## DESCRIPTION:

We are pleased to offer this beautifully presented and fully refurbished ground floor maisonette with direct access to private landscaped rear garden. The property offers great living space and comprises of living/dining room, modern fully fitted eat-in kitchen, two double bedrooms and modern fully fitted family bathroom. Further benefits include an off street parking space and garage to the rear with additional parking.

## COUNCIL TAX:

Band D

## AT A GLANCE

- Ground floor
- Long lease
- Spacious reception room
- Two double bedrooms
- Private rear garden
- Off street parking
- Garage
- Fully refurbished to a very high standard



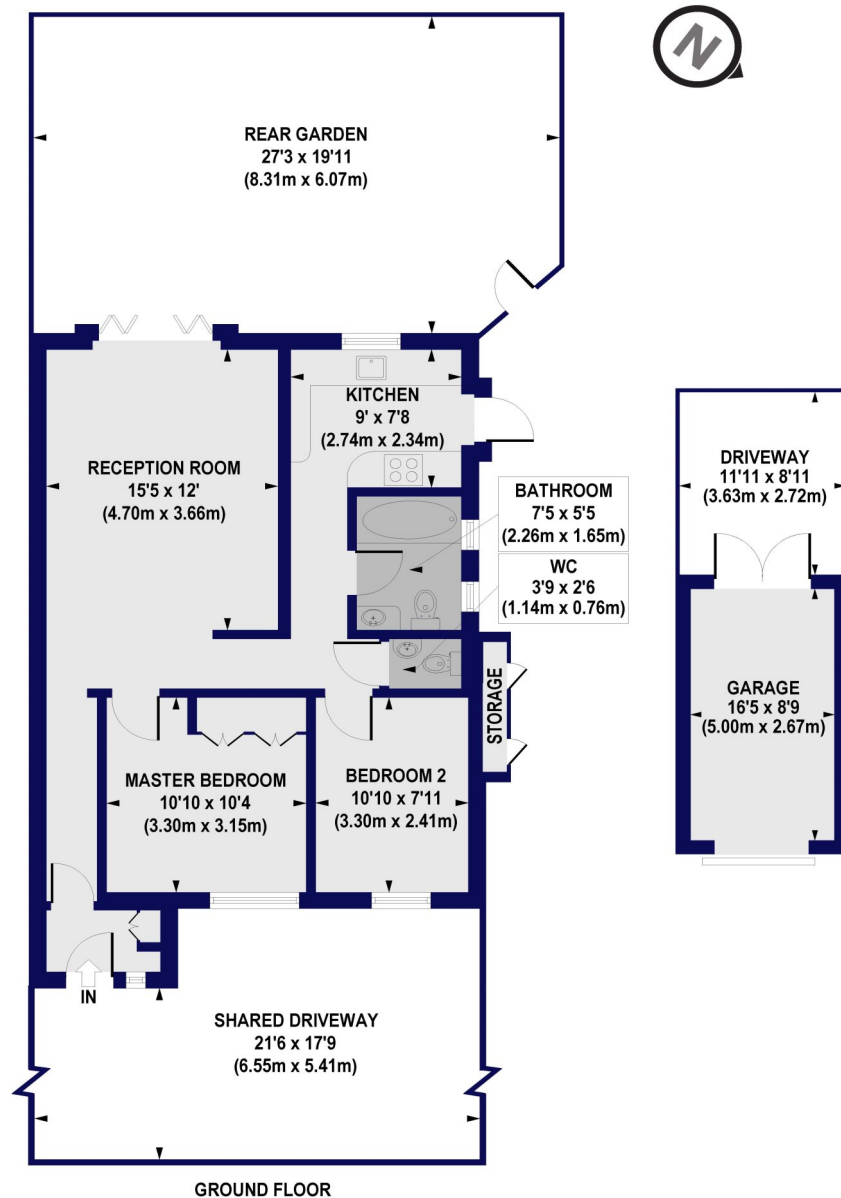




## Woodberry Gardens, N12

Approx. Gross Internal Floor Area 700 sq. ft / 65.03 sq. m (Excluding Garage)

Approx. Gross Internal Floor Area 843 sq. ft / 78.31 sq. m (Including Garage)



All measurements of walls, doors, windows, fittings and appliances, including their size and location, are shown as standard sizes and do not constitute any warranty or representation by the seller, their agent or CP Creative. Any intending purchaser must satisfy himself by inspection or otherwise as to the correctness of the information contained in these plans. This plan is for illustrative purposes only and should be used as such by any prospective purchasers.

**Winkworth**

