



GREENHILL TERRACE, WOOLWICH, SE18 4BS
£260,000 LEASEHOLD

TUCKED AWAY WITHIN THE HISTORIC GROUNDS OF THE FORMER GREEN HILL GARRISON SCHOOL, THIS UNIQUE ONE-BEDROOM SPLIT-LEVEL APARTMENT IS SET WITHIN A BEAUTIFULLY PRESERVED GRADE II LISTED PERIOD BUILDING, ONCE USED TO EDUCATE THE CHILDREN OF WOOLWICH'S GARRISON SOLDIERS IN THE MID-19TH CENTURY.

Blackheath | 0208 8520999 | blackheath@winkworth.co.uk

Winkworth

for every step...

winkworth.co.uk



DESCRIPTION:

Measuring approximately 490 sq.ft, the property features soaring ceilings and tall sash windows that flood the space with natural light. The ground floor is arranged as a generous open-plan reception and kitchen area measuring over 21ft, offering scope for defined living and dining areas.

A striking spiral staircase leads to the mezzanine bedroom, a bright open-plan sleeping area with views across the reception and fitted with handy eaves storage with an adjoining bathroom. The property has been freshly painted but would benefit by updating the kitchen and bathroom.

The flat forms part of a secure, gated development with resident parking, set amidst landscaped grounds once walked by military families. While full of heritage charm, the apartment also provides a canvas for updating and personalisation, making it ideal for first-time buyers, investors, or those seeking something a little more characterful.

This is a wonderful apartment and is sold chain free

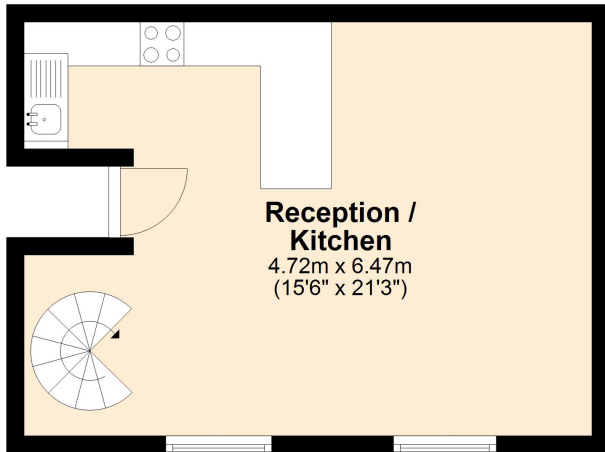
Conveniently located for Woolwich Common, the Barracks, and Woolwich town centre, with access to DLR, Elizabeth Line and National Rail services with direct short journeys to Canary Wharf (7 min), Liverpool Street (14 min) and West End (Bond Street 21 min). Heathrow is 48 min away. The development is perfectly placed to enjoy the sophisticated charms of Blackheath Village, the world heritage site at Greenwich, several parks and ancient woodlands and the O2 Arena.





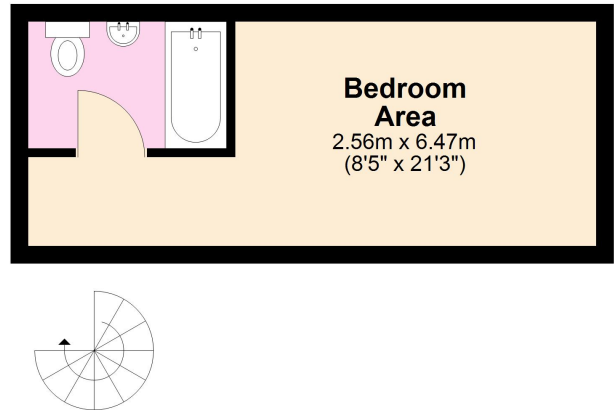
Ground Floor

Approx. 29.0 sq. metres (312.5 sq. feet)



Mezzanine

Approx. 16.5 sq. metres (178.1 sq. feet)



Total area: approx. 45.6 sq. metres (490.6 sq. feet)

This floorplan is for illustration purposes only and is not to scale. The position and size of doors, windows, appliances and other features are approximate. Any lease and service charge details have been provided by the vendor. Any interest party should have these checked by a solicitor as part of the purchase process.

Winkworth

for every step...

winkworth.co.uk

Winkworth wishes to inform prospective buyers and tenants that these particulars are a guide and act as information only. All our details are given in good faith and believed to be correct at the time of printing but they don't form part of an offer or contract. No Winkworth employee has authority to make or give any representation or warranty in relation to this property. All fixtures and fittings, whether fitted or not are deemed removable by the vendor unless stated otherwise and room sizes are measured between internal wall surfaces, including furnishings.