



GOOSEACRE LANE, HARROW, HA3
£660,000 FREEHOLD

LARGE FOUR BEDROOM SEMI-DETACHED FAMILY HOME

Kingsbury | 020 8204 0000 | kingsbury@winkworth.co.uk

Winkworth

for every step...

winkworth.co.uk



DESCRIPTION: This generously sized four-bedroom extended family home in Harrow offers off street parking, two reception rooms, an eat in kitchen, and downstairs W.C. The first floor comprises of three double bedrooms, a family bathroom, and separate shower room. The loft has been converted to accommodate a master suite including an en suite bathroom and storage. This house is located on a pretty tree lined cul-de-sac minutes from Woodcock Park and close to Mount Stuart primary school. There are great transport links into central London from Kenton Station Preston Road Station, as well as places of worship and amenities close by. A wonderful family home or for a first-time buyer.

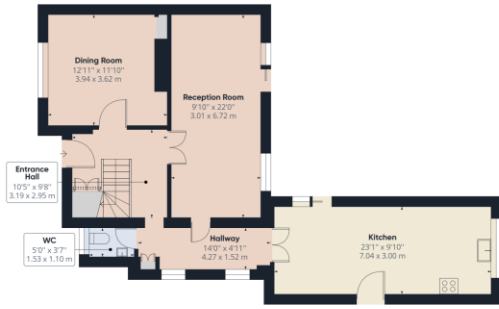


for every step...



Winkworth

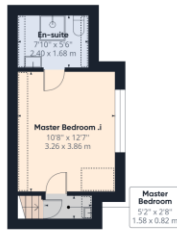
for every step...



Ground Floor Building 1



Floor 1 Building 1



Floor 2 Building 1

Approximate total area⁽¹⁾

1665.12 ft²
154.69 m²

Reduced headroom

38.01 ft²
3.53 m²

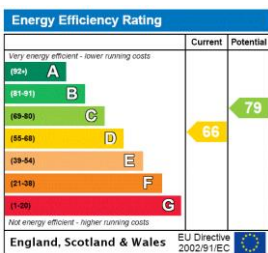
(1) Excluding balconies and terraces

☐ Reduced headroom (below 1.5m/4.92ft)

While every attempt has been made to ensure accuracy, all measurements are approximate, not to scale. This floor plan is for illustrative purposes only.

GIRAFFE 360

This floorplan is for illustration purposes only and is not to scale. The position and size of doors, windows, appliances and other features are approximate.



Kingsbury | 020 8204 0000 | kingsbury@winkworth.co.uk



for every step...

winkworth.co.uk

Winkworth wishes to inform prospective buyers and tenants that these particulars are a guide and act as information only. All our details are given in good faith and believed to be correct at the time of printing but they don't form part of an offer or contract. No Winkworth employee has authority to make or give any representation or warranty in relation to this property. All fixtures and fittings, whether fitted or not are deemed removable by the vendor unless stated otherwise and room sizes are measured between internal wall surfaces, including furnishings.